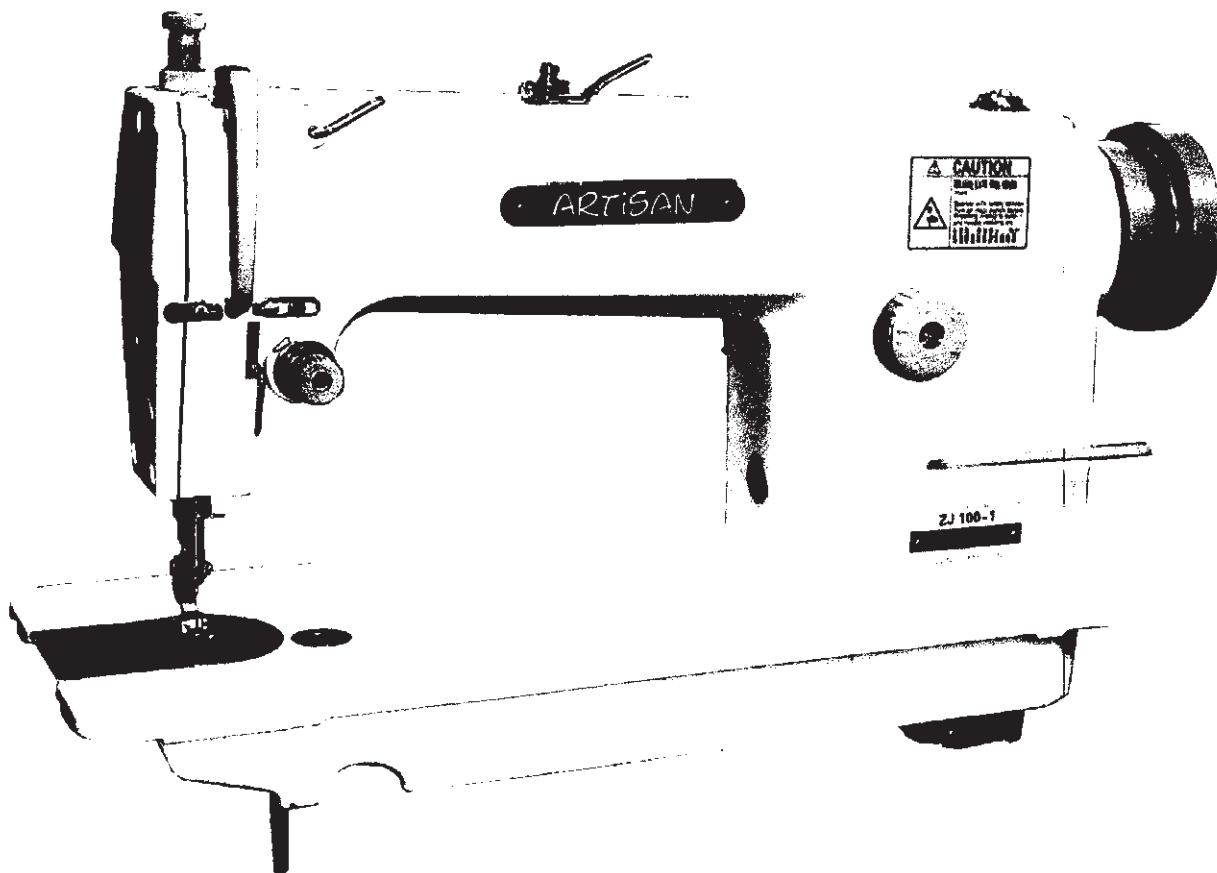


ARTISAN®



ARTISAN®

ZJ-100-1

**Operators Manual
and
Spare Parts Booklet**

CONTENTS

Operation Manual

1.Introduction	4
2.Main technical specifications	4
3.Installation and operation preparation of machine	5
3.1 Installation of machine	5
1) Place of installation	5
2) Fitting oil pan	5
3) Fitting machine head	5
4) Fitting thread winder	6
5) Installing the belt cover and bobbin winder	6
6)Sketch map of machine stand installation	7
3.2 Operation preparation	9
1) Cleaning	9
2) Inspection	9
3)Lubrication	9
4)Testing	9
4.Operation	10
4.1 Selecting sewing thread	10
4.2 Fitting needle	10
4.3 Threading	10
4.4 Setting the bobbin into the bobbin case	11
4.5 Regulate needle gauge and feeding	11
4.6 Thread tension	12
4.7 Regulating pressure of presser	14
4.8 Regulating thread hook	15
5.Regulating machine	15
5.1 Adjusting looping time of rotary hook	15
5.2 Regulating length of feed dogs	17

Parts Book

1. Components of case.....	18
2. Components of upper shaft and needle bar.....	20
3. Component of presser bar.....	23
4. Components of lower shaft and rotary hook.....	25
5. Components of feeding and lifting belt.....	27
6. Components of lubrication.....	30
7. Components of oil reservoir knee lifting press.....	33
8. Belt cover, bobbin winder & thread stand components.....	35
9. Accessories.....	38

一、机器简介 1. INTRODUCTION

该系列平缝机是一种单直针双线锁式线迹的工业用缝纫机。适用于缝制薄的和中等厚度的针、棉、毛以及化纤等织品及轻质皮革制品。该机结构合理，主要零部件均采用高级合金钢制成，因此能保证机器运转平稳、噪音小、使用方便、经久耐用。该机外形美观大方，其中自动加油平缝机还设有自动润滑系统，并装有油量控制阀，是服装、鞋帽行业的理想缝纫设备。

This series fiat bed industrial sewing machine is single straight needle, double thread lockstitcher, which is suitable for sewing thin and medium thickness knitting, cotton, wool, chemical fiber and light leather and etc. Products. The structure of this machine is reasonable, all of the main parts are made by high quality alloy steel. The features of it are as follows: steady running, lower noise, easy to operate, durable, beautiful appearance. The automatic oil flat bed sewing machine has automatic of garments lubrication system, and oil flow regulating valve, it is the ideal sewing equipment trades.

二、主要技术规格: 2. MAIN TECHNICAL SPECIFICATIONS

		中厚料	厚料
1	最高缝纫速度	3000针/分钟	2000针/分钟
2	最大线迹距	4毫米	8毫米
3	压脚提升高度	6毫米 (膝提可达10毫米)	6毫米 (膝提可达10毫米)
4	能缝最大厚度	5毫米	8毫米 (自由状态)
5	使用机针	DB×1 14号	DP×5 21号
6	润滑油	油号: 10号白油	
7	电机功率	380V/370W	

		For Light medium materials	For heavy materials
1	Max. sewing speed	3000 s.p.m	2000 s.p.m
2	Max. needle length	4mm	8mm
3	Presser lifting amount	6mm (10mm by knee lifting)	6mm (10mm by knee lifting)
4	Sewing ability of max. thickness	5mm	8mm (free state)
5	Needle	DB×1 14#	DP×5 21#
6	Lubricating oil	*10 white oil	
7	Power of electric machine	380V/370W	

三、机器安装和操作准备:

3.INSTALLATION OF MACHINE AND OPERATION PREPARATION

1. 机器安装

(1) 安装地点:

为使机器在高速运转时平稳、振动小, 安装必须有一个坚固而平坦的基础, 如果机架脚四只胶垫和地面之间有较好的接触, 就能使机架更加稳固, 运转时的噪音也会降低。

(2) 油盘的安装:

将两只油盘支座 1 和两只油盘座垫 3 分别装在台板凹槽的四角, 用油盘座钉 2 固定之, 再装上油盘 4。(图1、2)

(3) 机头的安装:

将机头连接钩 1 插入机壳底板孔内, 与台板上的机头连接钩座 2 相嵌合, 再将机头放到四只角的机头座垫 3 上。(图3、4)

1. Installation of machine:

(1) Place of installation:

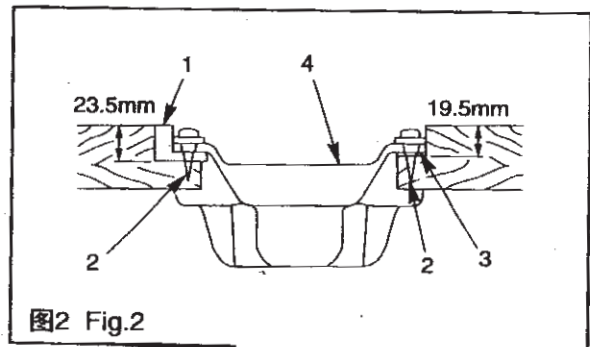
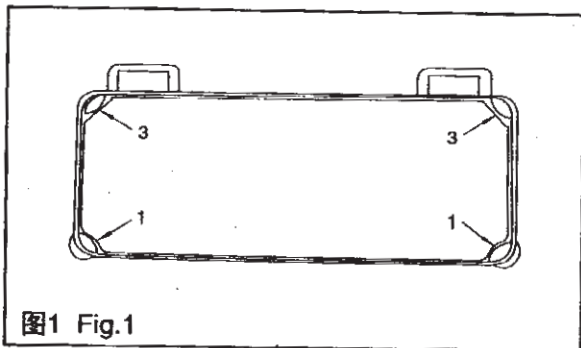
The machine should be installed on a strong base to ensure the machine to have a steady running and minimum vibration at high speed. If the four rubber mats on the feet of the sewing machine stand have a good connection with ground, it results in lower noise in operation.

(2) Fitting oil pan:

Put the oil rubber cushions(1) and oil pan felt cushions (3) separately on four corners of notch of the table, fix them with the screw of oil pan (2), then install the oil pan (4).(Fig. 1, 2)

(3) Fitting machine head:

Put the machine head connecting hooks (1) into the bed holes to engage respectively two hinges (2) stated in the table, than place the machine on the four cushions (3).(Fig. 3, 4)



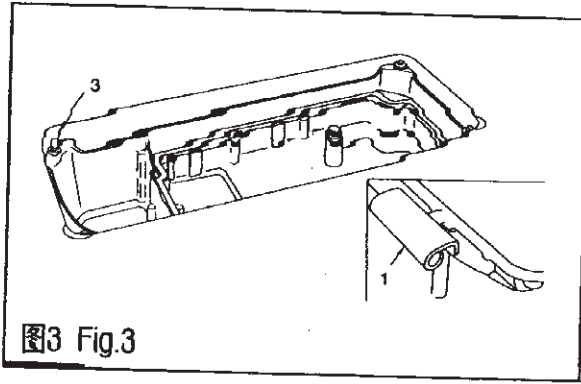


图3 Fig.3

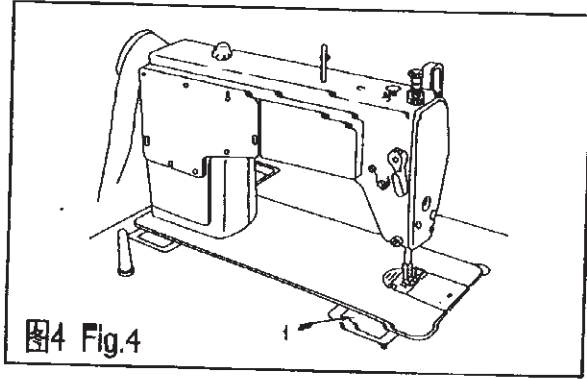


图4 Fig.4

(4) 绕线器的安装:

安装好机头，套上皮带后就可以着手装绕线器。安装绕线器时应将绕线器 5 (见图5) 对准皮带的外边，并使绕线轮和皮带之间有一定的空隙。但在按下绕线轮架时应能使绕线轮和皮带相互接触，上轮转动时，皮带能带动绕线轮一起转动。然后拧紧木螺钉将绕线器固定在台板上。

(4) Fitting thread winder:

After fitting machine head and the belt, the thread winder can be fitted. In (Fig. 5) when fitting winder, the winder wheel 1 should face the outside of belt 2. Between winder wheel and belt should have a certain clearance. If push down winder wheel stand 3, the winder wheel should touch the belt. And when balance wheel running, the belt can make the winder wheel run together, then tighten screw 4 to set the thread winder on the table.

(5) 皮带罩和绕器的安装(图5)

(5) Installing the belt cover and bobbin winder (Fig.5)

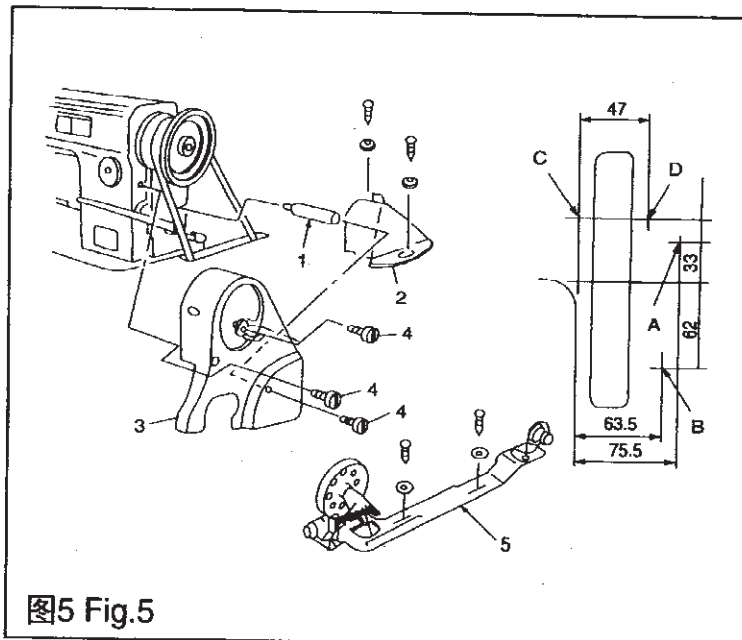
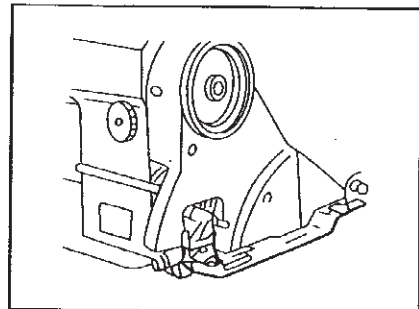
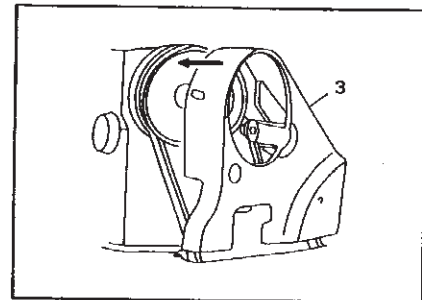


图5 Fig.5



安装程序

- 1) 在台板上引四只木螺钉导孔A、B、C、D。
- 2) 将罩壳支柱①装入机壳螺孔内。
- 3) 将上轮前罩壳③从后斜方装入，使上轮套进上轮前罩壳③的孔内。
- 4) 将上轮后罩壳②放置在导孔C、D上。
- 5) 用螺钉④将上轮前罩壳③固定在机壳上，此时的螺钉紧固扭矩，请控制为30kgfcm，即使紧固扭矩超过以上程度，也无效果。
- 6) 将上轮后罩壳②向后方移动，在上轮后罩壳②的橡胶部分碰到上轮前罩壳③时，再移动0.5~1mm，将其用木螺钉与垫圈固定。
- 7) 将木螺钉和垫圈把绕线器⑤固定在导孔A和B上。

Installation Procedure:

- 1) Drill four holes A, B, C, D, in the machine table for screws.
 - 2) Insert support ① in the threaded hole in the housing.
 - 3) Install the front belt cover ③ and get the hand wheel in the middle of the cover hole.
 - 4) Install the back belt cover ② at holes C, D.
 - 5) Fix the front belt cover ③ on the support with screws ④, The tightening torque for the screw ④ is about 30kgf.cm.
 - 6) Move the back belt cover ② backward, until its rubber touches the front belt cover ③, move it again for 0.5-1mm and fix it with screws and washers.
 - 7) Fix bobbin winder ⑤ hole A, B with screws.
- (6) 机架安装示意图: (图6)
- a. 机架安装位置。
 - B. 抽屉安装位置。
- (6) Sketch map of machine stand installation: (Fig.6)
- a. Position of machine stand.
 - b. Position of drawer.

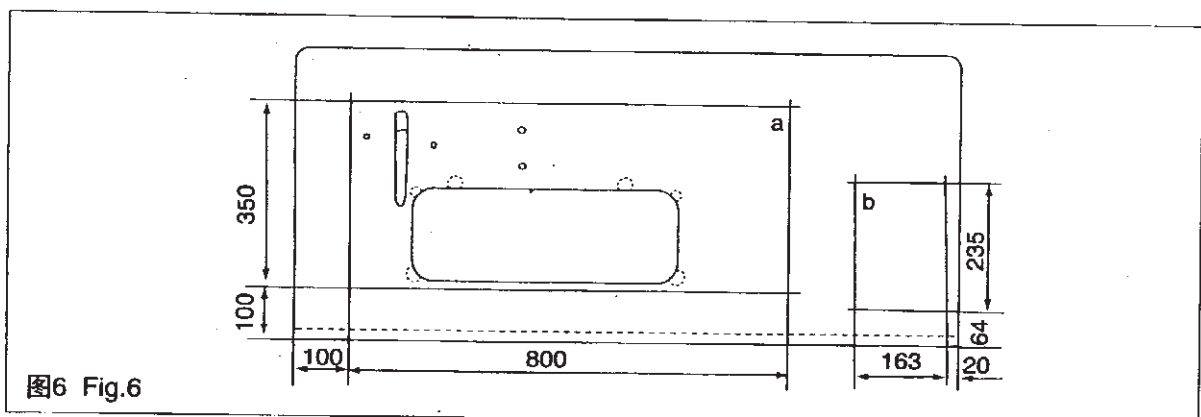


图6 Fig.6

2. Operation preparation;

(1) Cleaning:

Before packing each part of the machine, should be covered with anti-rust grease. And before operation new machine, anti-rust grease on each part of machine should be cleaned out with gasoline and clean with soft cloth.

(2) Inspection:

Some parts of machine head may get loose due to vibration incurred in transit or rough handling, so after cleaning, the machine should be thoroughly inspected. To check the machine head by means of turning balance wheel. The machine head must be regulated in the case of conditions such as abnormal noise from the compact of moving parts, the difficulty of the machine head to run, running into each other of moving parts.

(3) Lubrications:

a. Information for lubrication: (Fig. 7)

Before starting the machine, fill oil pan with sewing machine (2#white oil) up to HIGH mark A. When you operate the machine after lubricating, you will see splashing oil through oil sight window. Note that the amount the splashing oil is unrelated to the amount of the lubricating oil. But if the oil level is lower than LOW mark B, always refill the oil.

* Note: New machine (or those who have not been used for a long time) must be operated at a speed of 2000 s.p.m off and on for 10 minutes at first.

b. Adjusting the amount of oil supplied in the front of head (Fig. 8):

The amount of oil supplied in the oil reservoir in the front of head can be adjusted by regulating valve of amount of oil (1): turn the regulating valve of amount of oil (1), when dot A on the regulating valve is parallel to oil inlet tube(2), the amount of oil is maximum, when rotating the regulating valve, the amount of oil will be reduced gradually till the dot on the regulating valve is vertical to the oil inlet pipe, the oil flow regulator is closed.

c. In the same way, adjust the amount of oil supplied to the hook.

(4) Testing:

a. When machine running, the balance wheel should be counter clockwise.

b. The machine can not run without materials after threading.

c. At the beginning of operating, the speed of machine can be over 2500spm. Only after one or two months of running, the speed of the machine can be increased as per nature of fabrics.

四、机器的操作

4.Operation

1. 缝线的选择:

面线应采用左旋线, 底线则左、右旋线均可使用。缝线旋向的鉴别, 可按(图9)所示把缝线捏住, 以右手按图箭头方向搓转缝线, 若线股越搓越紧, 则是左旋线, 反之即为右旋线。

1. Selection of sewing thread:

Needle thread should be left twisting. (Fig. 9)

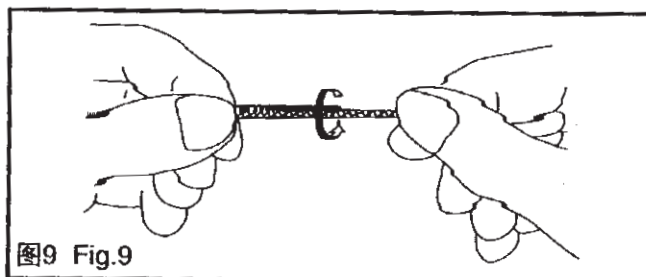


图9 Fig.9

2. 装置机针:

转动上轮, 使针杆上升到最高位置, 旋松支针螺钉1(图10), 注意机针的长槽应位于操作者的左面, 然后把针柄插入针杆下部的针孔内, 使其碰到针杆孔的底部为止, 再旋转支针螺钉固定机针。

2. Fitting needle:

Turning balance wheel to make the needle bar in the highest position and loosen the screw 1 (Fig. 10). Long groove of needle should face the left of the operator, then insert the needle into the hole of the needle bar. Tighten the screw.

3. 穿面线和引底线:

穿面线的顺序表示在(图11)中。自线团来的面线, 先穿入顶部的过线板1的右孔中, 经过夹线板2, 自左孔中引出, 再经过三眼线钩3的三个线眼, 向下套入夹线器4的夹线板之间, 再勾进挑线簧5, 绕过缓线调节钩6, 向上勾进右线钩7, 再穿过挑线杆8的线孔, 然后向下勾进左线钩9、针杆套筒线钩10、针杆线钩11, 最后将缝线自左向右穿过机针12的针孔内, 并引出100毫米左右的线备用。

引底线时, 先将面线捏住, 转动上轮, 使针杆向下运动, 并回升到最高位置。然后拉起捏住的面线线头, 底线即被牵引上来。最后把底、面二根线头, 一起置于压脚下面。

3. Threading:

As per (Fig. 11), when threading needle thread, first put the thread through thread guide 1 and tension plate 2 and thread retainer 3, down through tensioner 4 and thread take up spring 5 and thread releasing hook 6, then up through right thread hook 7 and thread taking up level 8. Again down through left thread hook 9 and needle bar sleeve thread hook 10 and needle bar thread hook 11. Finally pull the thread needle hole 12 from left to right with thread tail 100mm.

When threading bobbin thread, hold the needle thread while turning balance wheel to make the

needle bar move down and then to make it rise in the highest position. Then the bobbin thread is pulled out with the needle thread. Finally put the two threads under the presser foot.

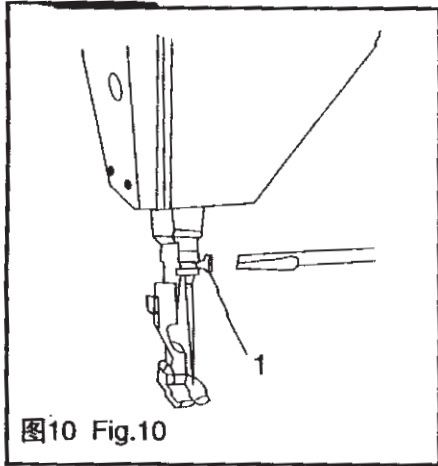


图10 Fig.10

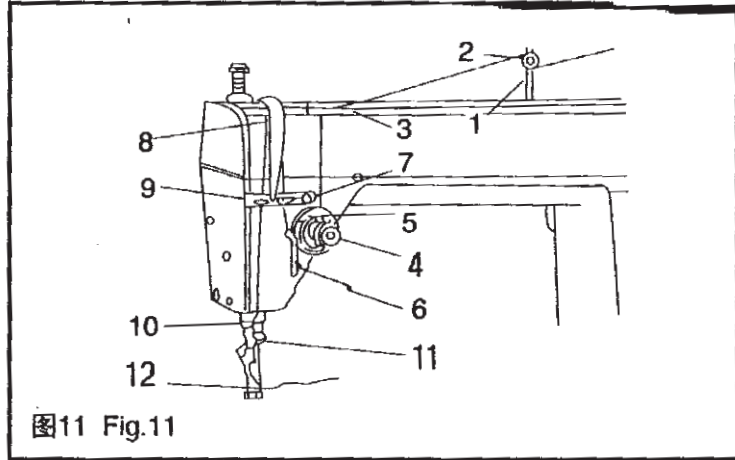


图11 Fig.11

4. 梭心的安装(图12)

(1) 将梭心装入梭子内。

(2) 将线从梭子上的线槽A中穿过，朝B方向拉出。这样，线通过夹线簧下从线孔B处引出。

(3) 拉底线C时，梭心应按箭头方向转动。

4. SETTING THE BOBBIN INTO THE BOBBIN CASE (Fig.12)

1) Install the bobbin in the bobbin case so that the thread wound direction is counterclockwise.

2) Pass the thread through thread slit A, and pull the thread in direction B. By so doing, the thread will pass under the tension spring and come out from notch B.

3) Check that the bobbin rotates in the direction of the arrow when thread C is pulled.

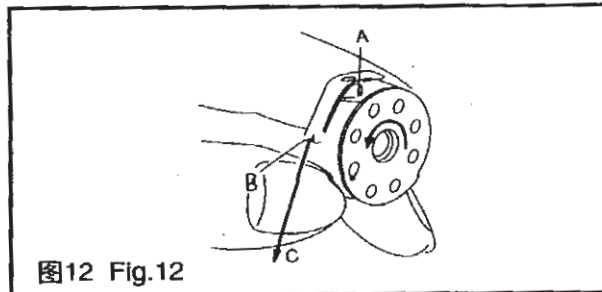


图12 Fig.12

5. 针距长短调节和倒顺送料控制:

针距的长度，可以用转动针距旋钮（图13）来调节。逆时针转动，针距调长。顺时针转动，针距调短。需要倒向送料时，可以将倒送扳手向下掀压，即能进行倒送。手放松后，倒送扳手能自动复位，这时又恢复顺向送料。

5. Regulating needle gauge and feeding:

Turning the rotary button can regulate the width of needle gauge (Fig. 13). If turning counterclockwise, the needle gauge is wide. If turning clockwise, the needle gauge is narrow. If it is

necessary to back tack, just put down the lever under the rotary button.

6. 缝线的张力:

缝线的张力要根据缝料的差别、缝线的粗细以及其他一些因素而变动。

实际使用中, 是依据缝纫出来的线迹来调整底、面线的张力, 使之能得到正常的线迹。

各种形状的线迹, 表示在(图14)中。

(a) 正常线迹。底、面线交锁在缝料中部;

(b) 面线紧、底线松的线迹。缝线交锁部分在缝料的上面;

(c) 面线松、底线紧的线迹。缝线交锁部分在缝料的底面;

(d) 底、面线均松的线迹。缝线虽然交锁在缝料中部, 但底、面线浮在缝料的表面上;

(e) 底、面线均紧的线迹。缝线虽然交锁在缝料中部, 但底、面线很紧地嵌入缝料。

6. Tension of thread:

Tension of thread is changed as per sewing materials and thread size. In (Fig.14), there are various stitches which often appear.

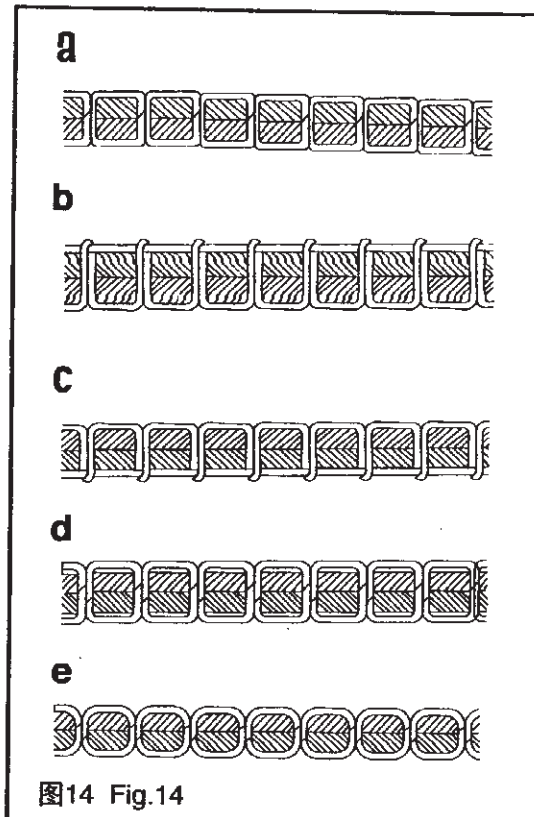
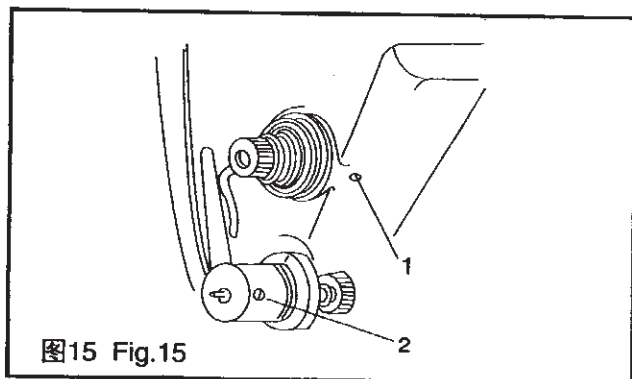
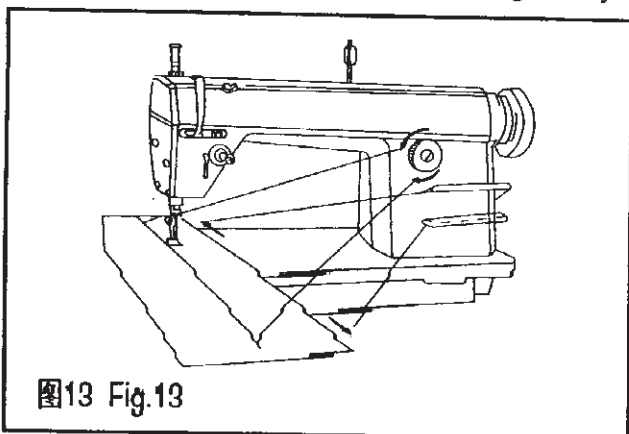
a. Normal. Two thread lock in the middle of the material.

b. Needle thread tension is too high. Two threads lock on the surface of the material.

c. Needle thread tension is too low. Two threads lock under the material.

d. The two threads tension are both low. They are floating on the surface of the material.

e. The two threads tension are both high. They are locking tightly in the material.



(1) 挑线簧的调节:

挑线簧的张力,一般在20克左右。其摆动范围为7~10毫米。缝纫特别薄的缝料(短针距),则要减弱挑线簧的张力和放宽其摆动范围。缝制特别厚的缝料则相反。

调节挑线簧的摆动范围时,可以先松开固定螺钉1(图15),然后转动夹线器,以调节其摆动范围。夹线器顺时针转动,则摆动范围增大。反之则减少。最后再将固定螺钉支紧。同样,挑线簧的张力,也可以进行调节。调节时,先松开固定螺钉1,将夹线器整个取出,再松开固定螺钉2,这时,夹线螺钉就能转动。顺时针转动时,张力增加。反之则减少。调节好后,按同样方法,将夹线器装好。

通常,机器在出厂前,挑线簧均已调整妥善。因此,只是在缝纫特殊的缝料或使用特殊的缝线时,才需要重新进行调整。

(1) Regulating take-up spring:

In general, the tension of take-up spring is about 20g and the range of swinging is 7-10mm. When sewing special light material (narrow needle gauge), the tension should be reduced and the range should be broadened. Adversely for special heavy material.

When regulating the range of swinging, first loose the fixed screw 1 (Fig. 15), then turn the tensioner to regulate the range of swinging. If turn the tensioner clockwise, the range is broadened. If turn it anti-clockwise, the range is narrowed. Then tighten the screw. When adjusting the tension of take-up spring, first loosen set screw 1, and take out the tensioner. Then loosen set screw 2, so the tension screw can be turned. Turning clockwise can increase tension. Turning anti-clockwise can reduce tension.

Generally, the take-up spring has been adjusted before ex-factory.

(2) 底面线张力的调整:

缝纫物的线迹应该如图14 (a)。如果线迹不正时,应对底、面线的张力加以调整,使之能达到正常的线迹。

如果面线太紧,底线太松,则应逆时针旋转夹线螺母,以放松面线的压力,并用小螺丝刀旋紧梭皮螺钉,加大底线的压力(图16)

如果面线太松,底线太紧,则应顺时针旋转夹线螺母,以加大面线的压力,并用小螺丝刀旋紧梭皮螺钉,减小底线的压力(图17)

如出现图14 (d)、(e)的线迹,也可以参照上述方法加以调整。

(2) Regulating thread tension:

The stitch on sewing material should be shown be Fig. 14a. If needle thread is too tight while bobbin thread is loose, the tension nut should be turned anti-clockwise to loosen the needle thread pressure and tighten the screw of bobbin spring to increase the bobbin thread pressure (Fig. 16). Adversely in previous case (Fig. 17)

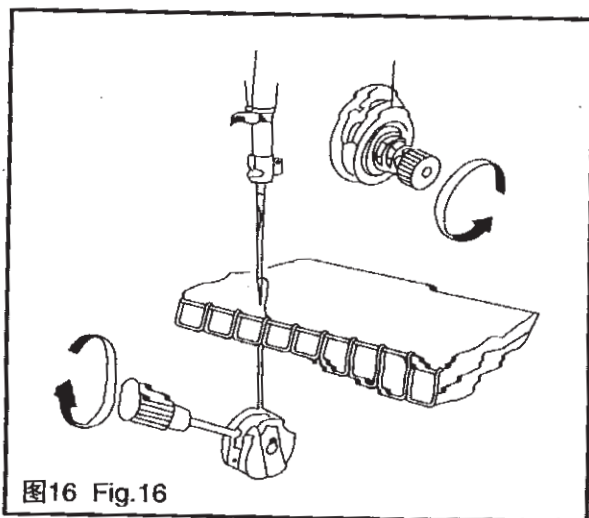


图16 Fig.16

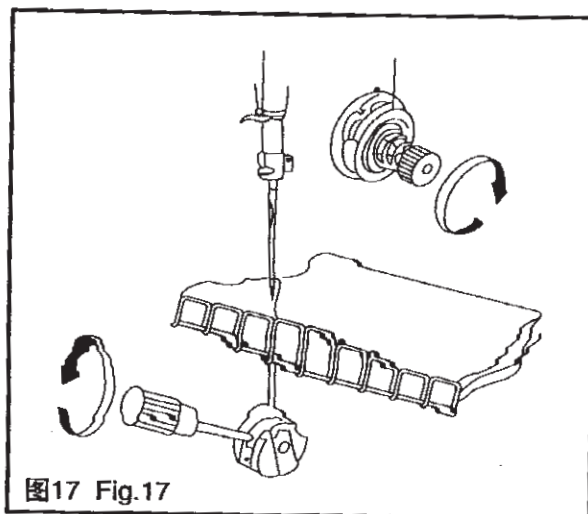


图17 Fig.17

7. 压脚压力的调节:

压脚的压力, 要根据缝料的厚度加以调整。缝纫厚料时, 应加大压脚的压力。这时, 可以将机头顶部的调压螺钉, 按(图18)(厚)所示箭头方向转动。反之, 缝薄料时, 可按(图18)(薄)所示的方向。转动调压螺钉, 以减少压脚的压力。

压脚的压力, 应以能正常推送缝料为度, 宜尽量减轻一些。

7. Regulating pressure of presser:

Pressure of presser should be regulated as per sewing materials. When sewing heavy materials, the pressure should be increased. Just turn the screw on top of the machine head (Fig. 18) (Heavy). Adversely when sewing light materials (Fig. 18) (Light).

Pressure of presser should be properly regulated so that it can feed material without a hitch.

8. 线钩的调节:

根据缝纫物的厚度和针距长度调节好线钩的位置后, 将能使缝纫的线迹更为整齐。

在缝纫厚料时。松开螺钉2(图19), 将线钩1向左移动, 以增加线量。在缝纫薄料时则往右移动线钩以减少线量。

8. Regulated thread hook:

In order to make the stitches moving beautifully, the position of thread hook should be regulated as per materials and the gauge of the needles.

When sewing heavy materials, first loosen the screw 2 (Fig. 19) and move the thread hook 1 to left to increase the thread amount. Adversely when sewing light materials.

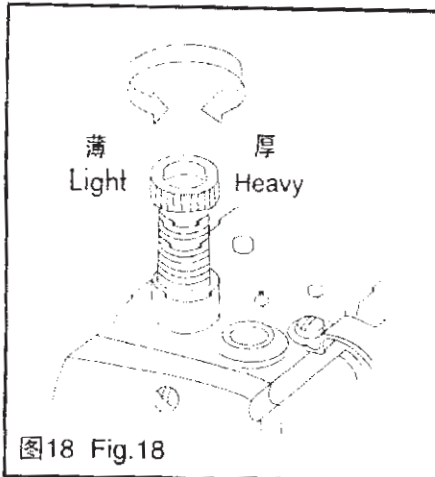


图18 Fig.18

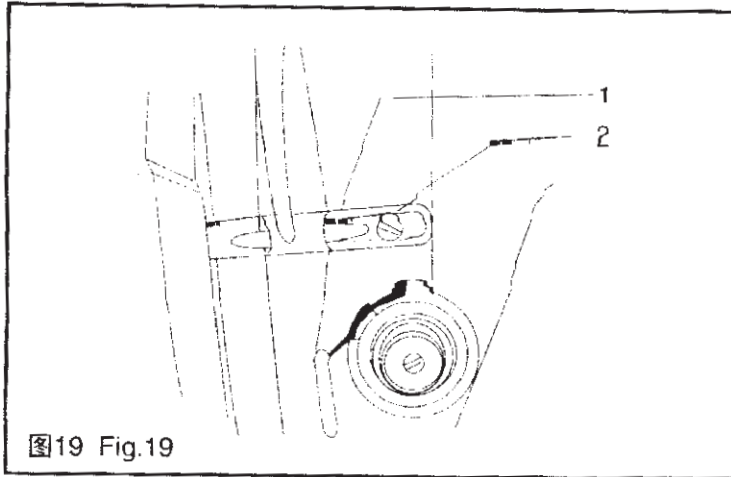


图19 Fig.19

五、机器的调整:

5.REGULATION OF MACHINE;

1. 旋梭勾线时间的调整:

旋梭和机针之间的相互运动关系,对缝纫性能的影响很大。标准的旋梭勾线时间是:当机针向下运动到最低位置后再向上回升中厚料2.2毫米,厚料2.8毫米时。

- (1) 旋梭的勾线尖,应与机针的中心线一致;
- (2) 在此位置时,勾线尖应高于机针孔上边2毫米(图20)

调整的方法如下:

- (1) 旋松旋梭的三个固定螺钉;
- (2) 转动上轮,使机针下降到最低位置后上升中厚料2.2毫米,厚料2.8毫米;
- (3) 转动旋梭,使勾线尖到达机针的中线处;
- (4) 松开针杆连接轴紧固螺钉“1”(图21);
- (5) 调整针杆的高度,使旋梭勾线尖高于机针孔上边2毫米;最后将全部紧固螺钉旋紧。

在调整旋梭的勾线时间时,还要注意到旋梭勾线尖与机针的侧面间隙。

旋梭勾线尖平面与机针缺口底部之间的距离,应调整到0.1毫米左右(图22)。

1. Adjustment of looping time of rotary hook:

The moving relationship between rotary hook and needle will affect the functions of sewing

greatly. The standard rotary hook looping time of is:

After the needle moves down in the lowest position, it will rise to 2.2mm for medium material, and 2.8mm for heavy material, at this time:

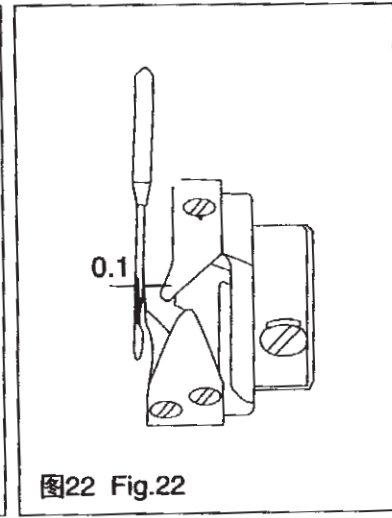
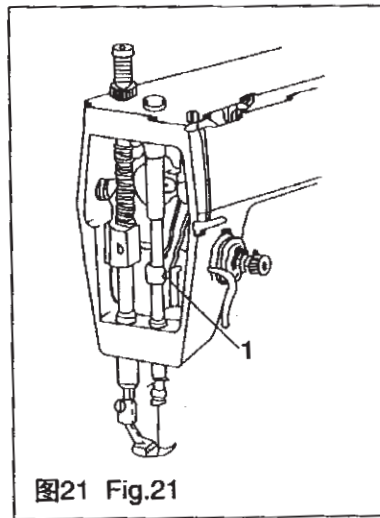
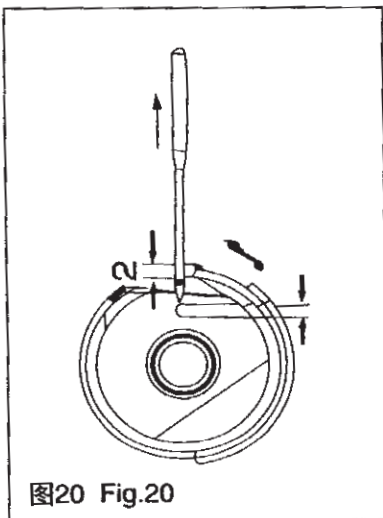
- (1) Looping point of rotary hook should be in with the mid-line of needle;
- (2) Looping point should be 2mm higher than the hole of needle (Fig. 20)

Method of regulation:

- (1) Loosen the three set screw of rotary hook.
- (2) Turn balance wheel to lower than the needle in the lowest position and then raise it 2.2mm for medium material, and 2.8mm for heavy one.
- (3) Turn the rotary hook to make the looping point on the position of the midline of needle.
- (4) Loosen the set screw of needle bar link shaft (Fig. 21)
- (5) Regulate the height of needle bar to make the looping point 2mm higher than the hole of needle.

When regulating looping time of rotary hook, always be careful of the side clearance between looping time and needle.

The gap between the level of looping point and the bottom of needle should be regulated in 0.1 mm (Fig. 22)

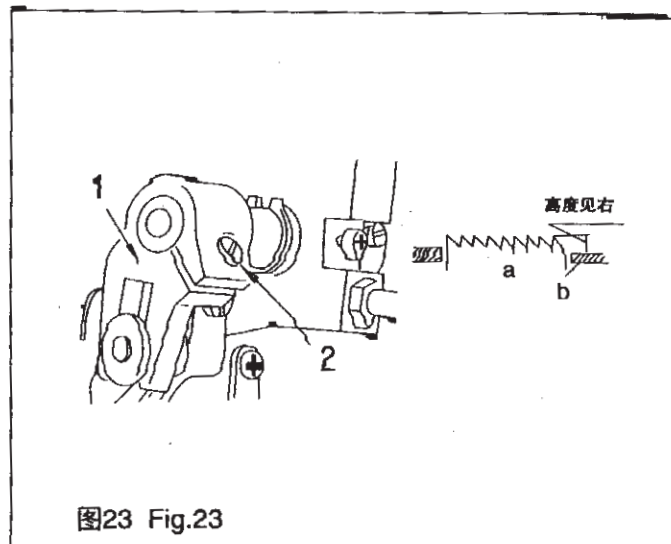


2. 送布牙高度的调节:

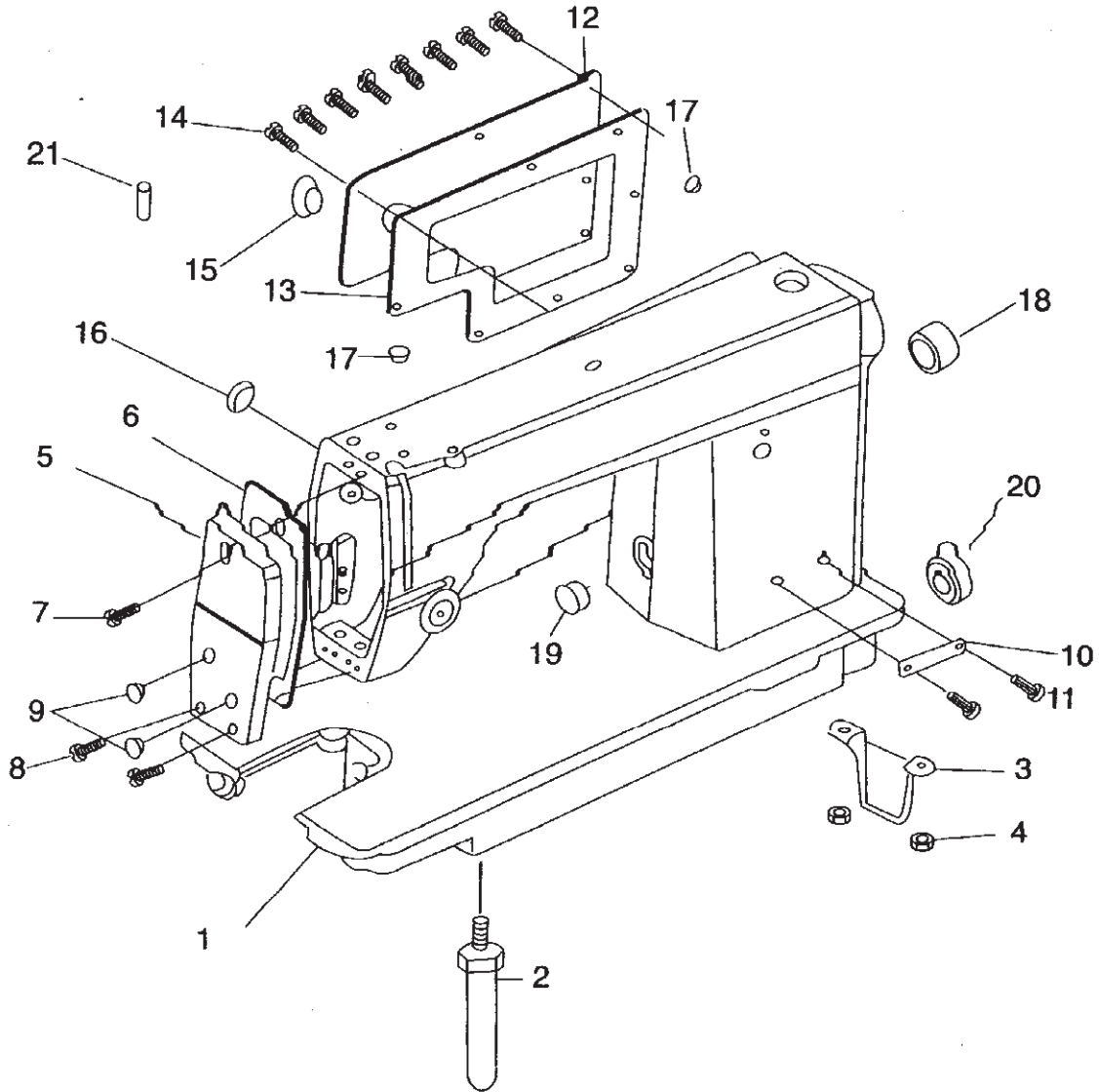
送布牙上升到最高位置时, 齿顶面一般应高于针板平面中厚料0.8~0.9毫米, 厚料1.15~1.25毫米。如果缝纫特厚或特薄的缝料, 则需调节送布牙的高度。调节时应先松开抬牙曲柄的紧固螺钉2(图23), 调节好后再把螺钉旋紧。

2. Regulating the length of feed dogs

The top of feed dogs should be 0.8~0.9mm for medium material, and 1.05~1.25mm for heavy material higher than the level of needle plate when the feed dogs rise in the highest position. If sewing special heavy or light materials, the gauge of feed dogs should be regulated. When adjusting, first loosen the fixed screw 2 (Fig. 23) of lifting belt crank.



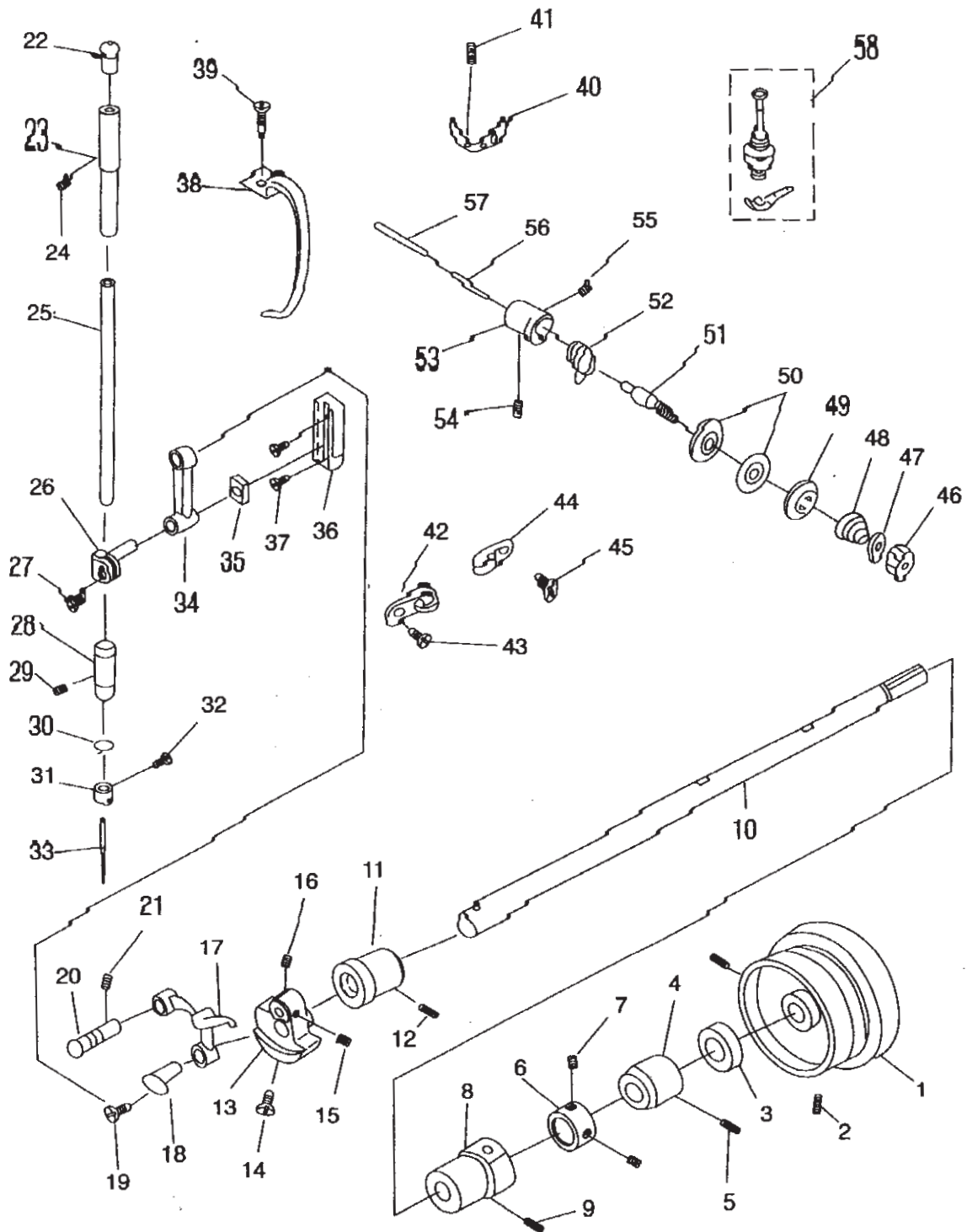
1、机壳组件 Components of Case



1、机壳组件 Components of Case

序号 REF. No.	件号 PART No.	名称 DESCRIPTION	数量 QTY	中厚料 For Light medium materials	厚料 For heavy materials
1	GQ161-8	机壳 Case	1	☆	
	GQ201-8	机壳 Case	1		☆
2	GS299-8	底板支柱 Bed screw stud, long	2	☆	☆
3	GR414-8	底板支承板 Bed support	1	☆	☆
4	GL15	底板支承板螺母 Nut of bed support	2	☆	☆
5	GR428-8-1	面板 Face plate	1	☆	☆
6	GR415-8	面板垫片 Gasket of face plate	1	☆	☆
7	GS35	面板上螺钉 Upper screw of face plate	1	☆	☆
8	GS42	面板下螺钉 Lower screw of face plate	2	☆	☆
9	GR1458-8	面板油塞 Oil cock of face plate	2	☆	☆
10	GQ164-8	型号牌 Model plate	1	☆	
	GQ204-8	型号牌 Model plate	1		☆
11	GX196-8	铆钉 Rivet	2	☆	☆
12	GR416-8	后盖板 Plate of back cover	1	☆	☆
13	GR417-8	后盖板垫片 Gasket of back cover plate	1	☆	☆
14	GS42	后盖板螺钉 Screw of back cover plate	9	☆	☆
15	GR1426-8	后盖板油塞 Oil cock of back cover plate	1	☆	☆
16	GR1429-8	针杆曲柄螺孔油塞 Oil cock of screw hole of needle bar crank	1	☆	☆
17	GR1461-8	小油塞 Small oil cock	2	☆	☆
18	GR530-8	送料调节顺油塞 Oil plug of feeding regulator	1	☆	☆
19	GR1426-8	倒送料轴孔油塞 Oil plug of axle hole of reversed feeding	1	☆	☆
20	GR1466-8	下轴工艺孔油塞 Oil plug of craft hole of lower axle	1	☆	☆
21	GR419-8	针杆连杆油线导管 Guide pipe of oil line of needle connecting bar	1	☆	☆

2. 上轴、针杆组件 Components of upper shaft and needle bar



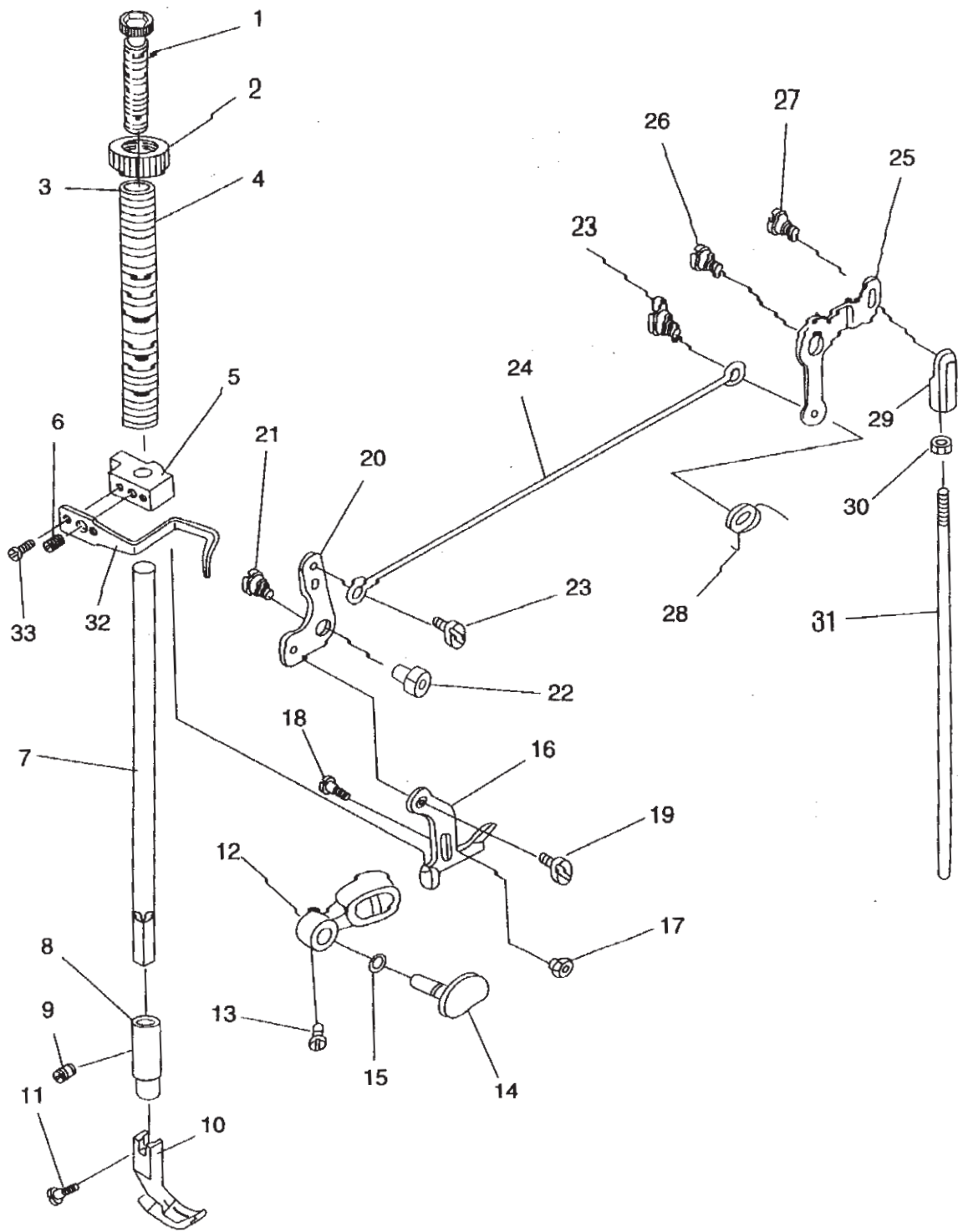
2、上轴、针杆组件 Components of upper shaft and needle bar

序号 REF. No.	件号 PART No.	名称 DESCRIPTION	数量 QTY	中厚料 For Light medium materials	厚料 For heavy materials
1	GP5	上轮 Balance wheel	1	☆	
	GP145-8		1		☆
2	GS37	上轮螺钉 Screw of balance wheel	2	☆	☆
3	GR421-8	上轴油封 Oil seal of upper axle	1	☆	☆
4	GO223-8	上轴后轴套 Main shaft bush rear	1	☆	☆
5	GS37	上轴后轴套螺钉 Screw for rear bush of main shaft	1	☆	☆
6	GR019	上轴中轴套挡圈 Retaining ring of middle bush of main shaft	1	☆	☆
7	GS50	上轴中轴套挡圈螺钉 Screw	2	☆	☆
8	G0222-8	上轴中轴套 Middle bush of main shaft	1	☆	☆
9	GS50	上轴中轴套紧固螺钉 Set screw	1	☆	☆
10	GZ346	上轴 Main Shaft	1	☆	☆
11	GO364	上轴前轴套 Front bush of main shaft	1	☆	☆
12	S2	上轴前轴套螺钉 Screw	1	☆	☆
13	GR562-8	针杆曲柄 Crank of needle bar	1	☆	☆
14	GS38	针杆曲柄定位螺钉 Fixed screw	1	☆	☆
15	GS307-8	针杆曲柄紧固螺钉 Position screw of crank of thread take-up	1	☆	☆
16	GS58	挑线曲柄定位螺钉 Screw	2	☆	☆
17	GR91/3-8	挑线杆部件 Part of thread take-up bar	1	☆	
	GR553/3-8	挑线杆部件 Part of thread take-up bar	1		☆
18	GR90-8	挑线曲柄 Crank of thread take-up	1	☆	
	GR557-8	挑线曲柄 Crank of thread take-up	1		☆
19	GS40	挑线曲柄螺钉 Screw	1	☆	
	GS296-8	挑线曲柄螺钉 Screw	1		☆
20	GX13	挑线连杆销 Link pin of thread take-up	1	☆	☆
21	GS37	挑线连杆销螺钉 Screw	1	☆	☆
22	GR99	针杆油封 Pil seal of needle bar	1	☆	☆
23	GO15	针杆上套筒 Upper bush of needle bar	1	☆	☆
24	GS42	针杆上套筒螺钉 Screw	1	☆	☆
25	GZ242-8	针杆 Needle bar	1	☆	☆
26	GR97	针杆连接柱 Connecting post of needle bar	1	☆	☆
27	GS41	针杆连接柱螺钉 Screw	1	☆	☆
28	GO280-8	针杆下套筒 Lower bush of needle bar	1	☆	☆
29	GS43	针杆下套筒螺钉 Screw	1	☆	☆
30	GR559-8	针杆过线勾 Upper thread guide of needle bar	1	☆	☆
31	GR1481	针杆下线勾 Lower thread guide of needle bar	1	☆	☆
32	GS44	机钉螺钉 Screw of needle	1	☆	☆
33	GV133-8	机针 Needle	1	☆	☆
34	GR558-8	针杆连杆 Rod of needle bar	1		☆
	GR96	针杆连杆 Rod of needle bar	1	☆	
35	GU1	针杆连接柱滑块 Sliding block of connecting post of needle bar	1	☆	☆

2. 上轴、针杆组件 Components of upper shaft and needle bar

序号 REF. No.	件号 PART No.	名称 DESCRIPTION	数量 QTY	中厚料 For Light medium materials	厚料 For heavy materials
36	GR020	针杆连接柱滑块导轨Slide guide	1	☆	☆
37	GS42	针杆连接柱滑块导轨螺钉Screw	2	☆	☆
38	GK153-8	挑线杆护罩	1	☆	☆
39	GS010	挑线杆护罩螺钉Screw	1	☆	☆
40	GR101	三眼线勾Three hole thread eyelet	1	☆	☆
41	GS45	三眼线勾支头螺钉Screw	1	☆	☆
42	GR2023	左线勾Left thread hook	1	☆	☆
43	GS0158	左线勾螺钉Screw	2	☆	☆
44	GR471	右线勾Right thread hook	1	☆	☆
45	GS33	右线勾螺钉Screw	1	☆	☆
46	GL10	夹线螺母Nut	1	☆	☆
47	GR1490	夹线止动板Stop plate	1	☆	☆
48	GW181-8	夹线簧Thread tension spring	1	☆	☆
49	GR1489	松线板Tension release disc	1	☆	☆
50	GR1488	夹线板Thread tension plate	2	☆	☆
51	GS85	夹线螺钉Screw of thread tension	1	☆	☆
52	GW180-8	挑线簧Spring of thread take-up	1	☆	☆
53	GR103	挑线簧调节器Regulator of thread take-up spring	1	☆	☆
54	GS83	夹线器紧固螺钉Screw	1	☆	☆
55	GS48	夹线器紧定螺钉Screw of thread tensioner	1	☆	☆
56	GX14	松线钉Tension release pin	1	☆	☆
57	GX25	夹丝器顶杆Supporting pin of thread tension	1	☆	☆
58	GR778/7-8	过线器部件Components of thread guide	2	☆	☆

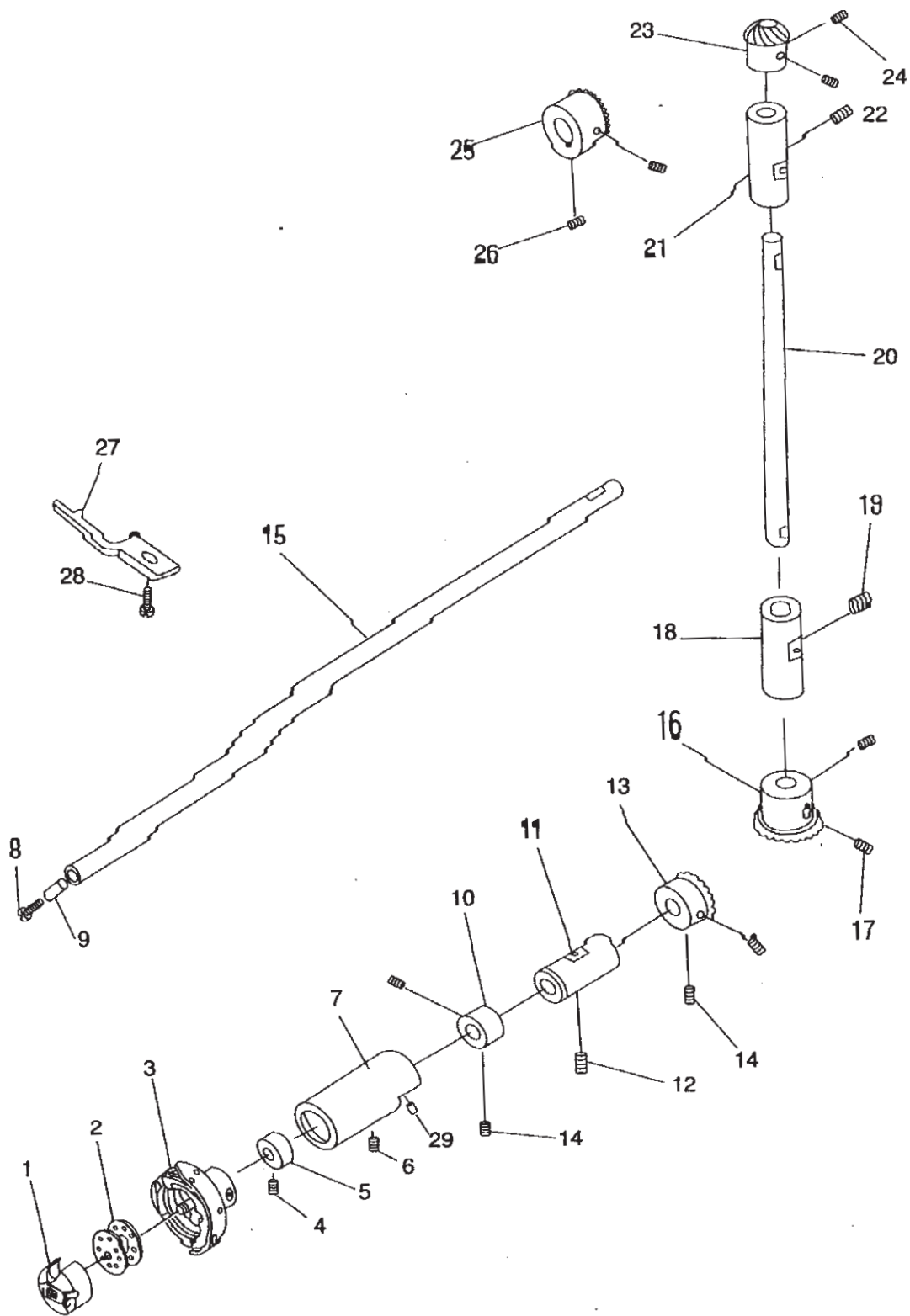
3. 抬压脚组件 Component of presser bar



3. 抬压脚组件 Component of presser bar

序号 REF. No.	件 号 PART No.	名 称 DESCRIPTION	数量 QTY	中 厚 料 For Light medium materials	厚 料 For heavy materials
1	GS018	调压螺钉 Regulator of presser spring	1	☆	☆
2	GL18	调压螺母 Nut	1	☆	☆
3	GR1494	调压导杆 Guide bar of regulator of presser	1	☆	☆
4	GW253	压杆簧 Spring of presser bar	1	☆	
	GW182-8	压杆簧 Spring of presser bar	1		☆
5	GR777-8	压杆导架 Guide bracket of presser bar	1	☆	☆
6	GS50	压杆导架螺钉 Screw	1	☆	☆
7	GZ348	压杆 Presser bar	1	☆	☆
8	GO8	压杆套筒 Bush of presser bar	1	☆	☆
9	GS43	压杆套筒螺钉 Screw	1	☆	☆
10	GM161/5-8	活压脚部件 Part of hinged presser foot	1	☆	☆
11	GS0100	活压脚螺钉 Screw	1	☆	☆
12	GR2823	压脚扳手 Hand lifter lever	1	☆	☆
13	GS030	压脚扳手螺钉 Screw	1	☆	☆
14	GR462-8	压脚板手凸块 Convex block	1	☆	☆
15	GR422-8	压脚板手凸块轴O形圈 O-ring	1	☆	☆
16	GR028	抬压脚升降板 Lifting lever	1	☆	☆
17	GL11	升降板螺柱 Screw post	1	☆	☆
18	GS69	长降板吊紧螺钉 Screw of lifting plate	1	☆	☆
19	GS88	升降板上螺钉 Upper screw of lifting plate	1	☆	☆
20	GR027	抬压脚前杠杆 Hing of lifting foot	1	☆	☆
21	GS69	前杠杆吊紧螺钉 Screw	1	☆	☆
22	GL11	前杠杆螺柱 Screw post	1	☆	☆
23	GS87	抬压脚拉杆螺钉 Screw	2	☆	☆
24	GR026	抬压脚拉杆 Connecting rod	1	☆	☆
25	GR761-8	抬压脚后杠杆 Rear lever	1	☆	☆
26	GS86	后杠杆螺钉 Screw of rear lever	1	☆	☆
27	GS53	顶杆接头螺钉 Connecting screw of top lever	1	☆	☆
28	GW33	后杠杆簧 Spring of rear lever	1	☆	☆
29	GR113	顶杆接头 Junction of top lever.	1	☆	☆
30	GL6	顶杆螺母 Nut	1	☆	☆
31	GX339	抬压肢顶杆 Top lever of lifting presser foot	1	☆	☆
32	GR615-8	缓线调节钩	1	☆	☆
33	GS320-8	缓线调节钩螺钉	1	☆	☆

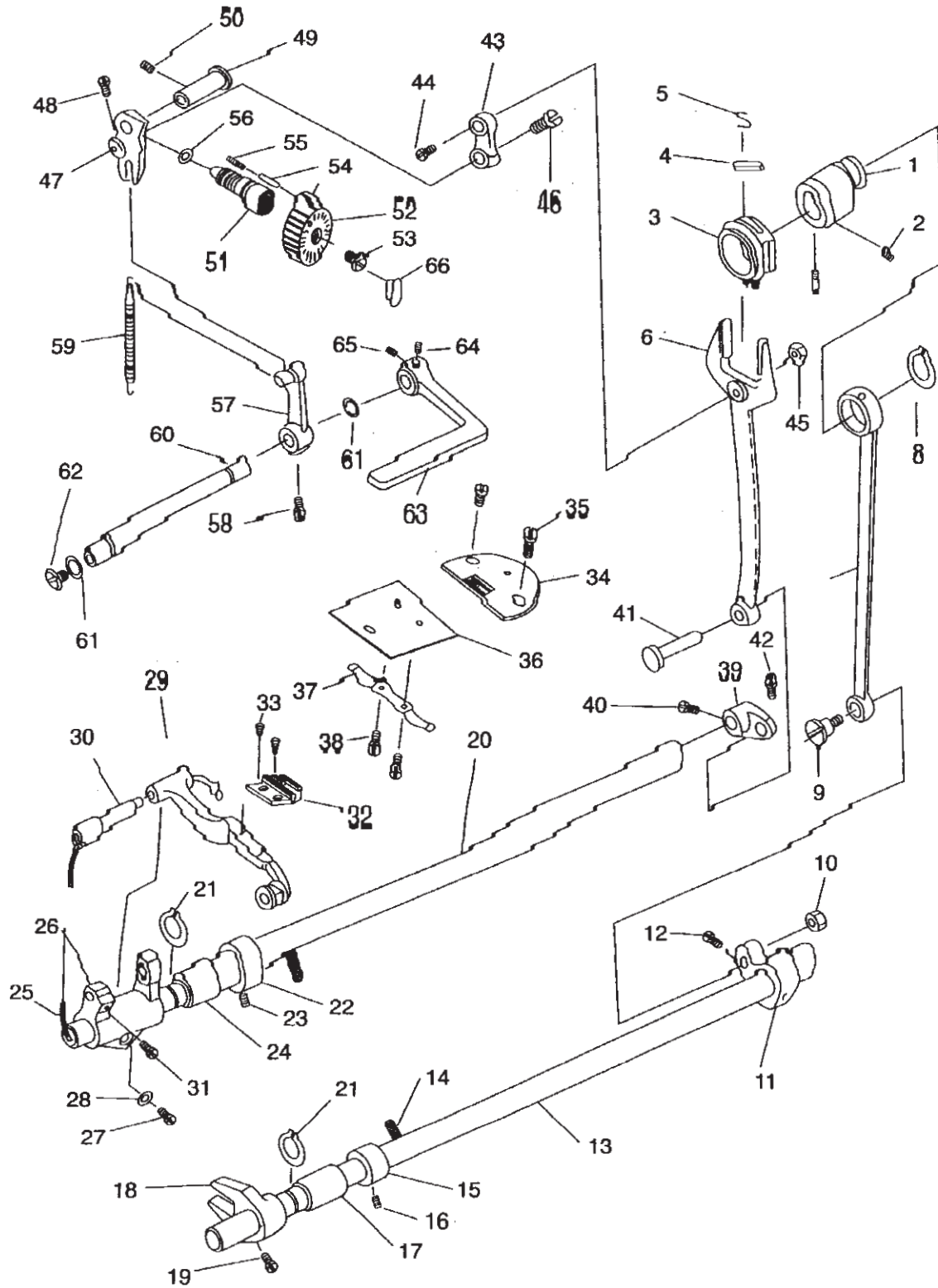
4、下轴、旋梭组件 Components of lower shaft and rotary hook



4. 下轴、旋梭组件 Components of lower shaft and rotary hook

序号 REF. No.	件号 PART No.	名称 DESCRIPTION	数量 QTY	中厚料 For Light medium materials	厚料 For heavy materials
1	GR119/9	梭壳 Bobbin case	1	☆	
		梭壳 Bobbin case	1		☆
2	GR120	梭心 Bobbin	1	☆	
	GR566-8	梭心 Bobbin	1		☆
3	GR118/14	旋梭 Rotary hook	1	☆	
		旋梭 Rotary hook	1		☆
4	GS330-8	下轴挡油圈螺钉 Screw	2		☆
5	GR634-8	下轴挡油圈 Oil ring	1		☆
6	GS301-8	下轴前轴套螺钉 Screw	1	☆	☆
7	GO269-8	下轴前轴套 Bushing	1	☆	☆
8	GS329-8	下轴限油螺钉 Screw	1		☆
9	GR329-8	下轴限油芯 Oil wick	1		☆
10	GR568-8	下轴后轴套挡圈 Retaining ring	1	☆	☆
11	GO244-8	下轴后轴套 Rear bush	1	☆	☆
12	S2	下轴后轴套螺钉 Screw	1	☆	☆
13	GC1	下轴伞齿轮 Pinion	1	☆	
	GC153-8	下轴伞齿轮 Pinion	1		☆
14	GS39	下轴伞齿轮螺钉 Screw	4	☆	☆
15	GZ243-8	下轴 Hook driving shaft	1	☆	☆
16	GC2	竖轴下伞齿轮 Lower pinion	1	☆	
	GC159-8	竖轴下伞齿轮 Lower pinion	1		☆
17	GS39	竖轴下伞齿轮螺钉 Screw	2	☆	☆
18	GO244-8	竖轴下套 Lower bush of upring shaft	1	☆	☆
19	GS37	竖轴下套螺钉 Screw	1	☆	☆
20	GZ220-8	竖轴 Upright shaft	1	☆	
	GZ228-8	竖轴 Upright shaft	1		☆
21	GO224-8	竖轴上轴套 Upper bush of upring shaft	1	☆	
	GO279-8	竖轴上轴套 Upper bush of upring shaft	1		☆
22	GS37	竖轴上轴套螺钉 Screw	1	☆	☆
23	GC3	竖轴上伞齿轮 Upper pinion of upring shaft	1	☆	
	GC158-8	竖轴上伞齿轮 Upper pinion of upring shaft	1		☆
24	GS58	竖轴上伞齿轮螺钉 Pinion of upper shaft	2	☆	☆
25	GS39	上轴上伞齿轮螺钉 Screw	2	☆	☆
26	GC3	上轴伞齿轮 Retaining hook	1	☆	
27	GR762-8	旋梭定位勾 Screw	1	☆	☆
28	GS328-8	旋梭定位勾螺钉 Screw	1	☆	☆

5. 送布抬牙组件 Components of feeding and lifting belt



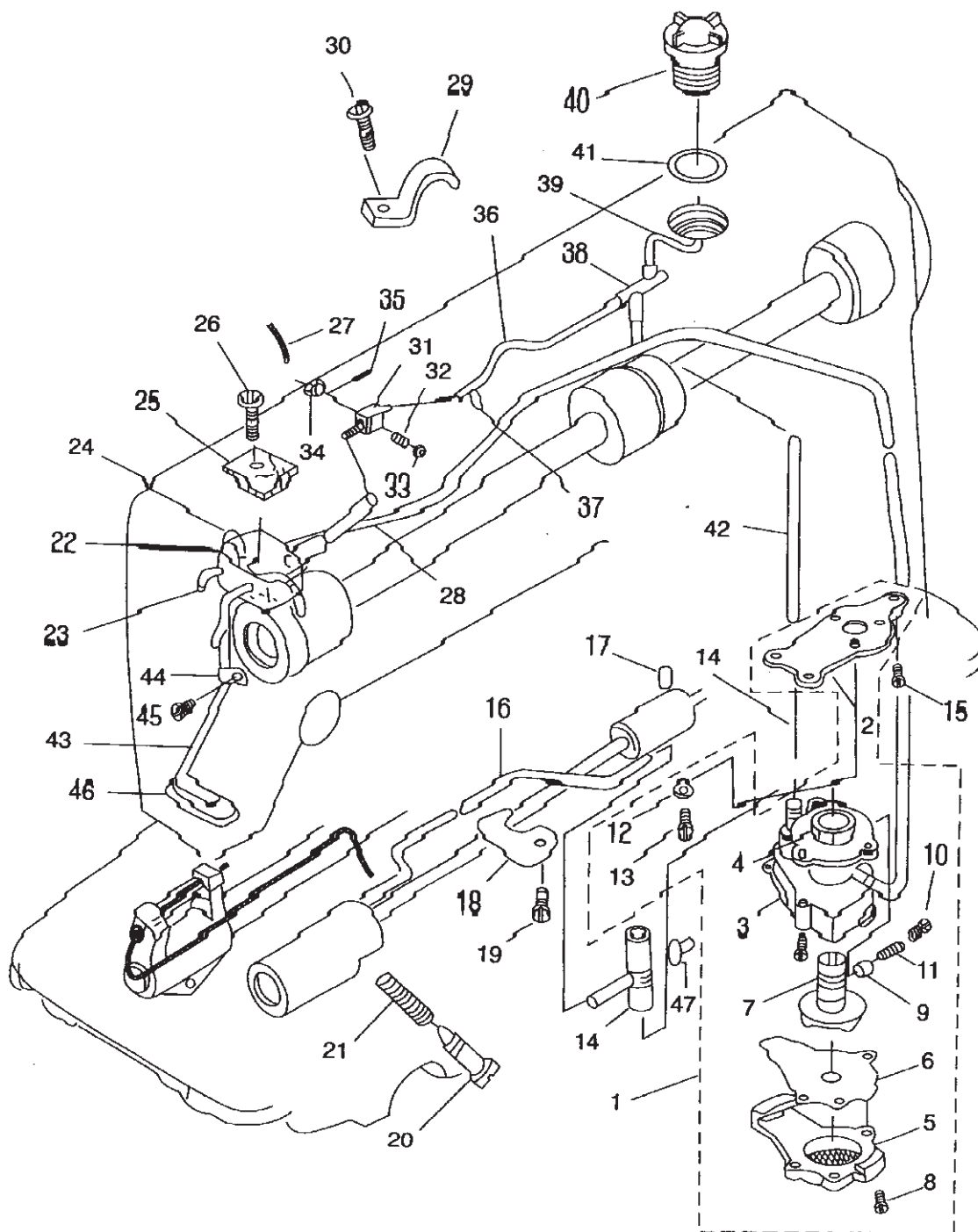
5. 送布抬牙组件 Components of feeding and lifting belt

序号 REF. No.	件号 PART No.	名称 DESCRIPTION	数量 QTY	中厚料 For Light medium materials	厚料 For heavy materials
1	GT158-8	送布抬压偏心轮 Eccentric wheel of feeding	1	☆	
	GT157-8	送布抬压偏心轮 Eccentric wheel of feeding	1		☆
2	S19	偏心轮螺钉 Screw	2	☆	☆
3	GR1085-8	偏心轮套圈 Eccentric ring	1	☆	
	GR741-8	偏心轮套圈 Eccentric ring	1		☆
4	SR134	偏心轮套圈油毡 Oil wick	1	☆	☆
5	GW24	偏心轮套圈油毡簧 Spring of oil wick	1	☆	☆
6	GR576-8	叉形送布杆 Forked feeding bar	1	☆	☆
7	GH218-8	抬牙连杆 Connecting bar	1	☆	
	GH219-8	抬牙连杆 Connecting bar	1		☆
8	GR650-8	抬牙连相干轴用挡圈 Retaining ring	1	☆	☆
9	GS341-8	抬牙连杆轴位螺钉 Screw	1	☆	☆
10	GL169-8	抬牙连杆轴位螺母 Nut	1	☆	☆
11	GH217-8	抬牙后曲柄 Crank	1	☆	☆
12	GS334-8	抬牙后曲柄螺钉 Screw	1	☆	☆
13	GZ236-8	抬牙轴 Lifting shaft	1	☆	☆
14	GR651-8	抬牙轴油线 Oil thread	1	☆	☆
15	GR589-8	抬牙轴挡圈 Retaining ring	1	☆	☆
16	GS305-8	抬牙轴挡圈螺钉 Screw	2	☆	☆
17	GO273-8	抬牙轴前轴套 Bushing	1	☆	☆
18	GH216-8	抬压叉形曲柄 Crank	1	☆	
	GH220-8	抬压叉形曲柄 Crank	1		☆
19	GS340-8	抬压叉形曲柄螺钉 Screw	1	☆	☆
20	GZ235-8	送料轴 Feeding shaft	1	☆	
	GZ244-8	送料轴 Feeding shaft	1		☆
21	GR643-8	送料轴轴用挡圈 Retaining ring	2	☆	☆
22	GR589-8	送料轴挡圈 Retaining ring	1	☆	☆
23	GS305-8	送料轴挡圈螺钉 Screw 1/4×40L=6	2	☆	☆
24	GO273-8	送料轴前轴套 Bushing	1	☆	☆
25	GR644-8	送料轴油线 Oil thread	1	☆	☆
26	GR645-8	牙架座 Tooth rack base	1	☆	
	GR765-8	牙架座 Tooth rack base	1		☆
27	GS335-8	牙架座螺钉 Screw 3/16×28L=14	2	☆	☆
28	GR646-8	牙架座螺钉垫圈 Washer	2	☆	☆
29	GR647/4-8	牙架部件 Tooth rack device	1	☆	
30	GX222-8	牙架销 Pin	1	☆	☆
31	GS336-8	牙架销螺钉 Screw 11/64×40L=7	1	☆	☆
32	GM201-8	送料牙 Feed dog	1	☆	
	GM169-8	送料牙 Feed dog	1		☆

5. 送布抬牙组件 Components of feeding and lifting belt

序号 REF. No.	件号 PART No.	名称 DESCRIPTION	数量 QTY	中厚料 For Light medium materials	厚料 For heavy materials
33	GS337-8	送料牙螺钉 1/8X44L=6 Screw	2	☆	☆
34	GM166-8	针板 Needle plate	1	☆	
	GM170-8	针板 Needle plate	1		☆
35	GS044	针板螺钉 Screw	1	☆	☆
36	GR147	推板 Pushing plate	2	☆	☆
37	GW256	推板簧 Pushing plate Spring	1	☆	☆
38	GS68	推板簧螺钉 Screw	1	☆	☆
39	GR763-8	送布轴曲柄 Crank	1	☆	
	GR783-9	送布轴曲柄 Crank	1		☆
40	GS298-8	送布轴曲柄螺钉 Screw	1	☆	☆
41	GX195-8	送布轴曲柄销 Crank Pin	1	☆	☆
42	GS45	送布轴曲柄销螺钉 Screw	1	☆	☆
43	GR136	针距连针 Needle gauge link	1	☆	☆
44	GS59	小圆锥螺钉 Screw	1	☆	☆
45	GL7	小圆锥螺母 Nut	1	☆	☆
46	GX18	针距连杆销 Link pin of needle gauge	1	☆	☆
47	GR037	针距调节器 Regulator of needle gauge	1	☆	
	GR569	针距调节器 Regulator of needle gauge	1		☆
48	GS61	针距连杆销支头螺钉 Screw	1	☆	☆
49	GX27	针距调节器销 Pin of needle gauge regulator	1	☆	☆
50	S2	针距调节器销螺钉 Screw	1	☆	☆
51	GS295-8	针距调节螺栓 Regulating bolt	1	☆	☆
52	GR771-8-1	针距旋钮 Botton part of needle gauge plate	1	☆	
	GR764-8	针距旋钮 Botton part of needle gauge plate	1		☆
53	GS046	针距盘螺钉 Screw	1	☆	☆
54	GS29	锁合销 Pin	1	☆	☆
55	GW22	锁合销簧 Spring	1	☆	☆
56	GR424-8	针距调节螺钉O形圈 O-ring	1	☆	☆
57	GR787-8	倒送杆部件 Back feed bar	1	☆	
	GR039/3	倒送杆部件 Back feed bar	1		☆
58	GS0103	倒送杆体螺钉 Screw	1	☆	☆
59	GW26	倒送杆拉簧 Spring	1	☆	☆
60	GZ221-8	倒送杆轴 Shaft	1	☆	☆
61	GR423-8	倒送杆轴O形圈 O-ring	2	☆	☆
62	GS051	倒送料轴端螺钉 Screw	1	☆	☆
63	GR041	倒送料扳手 Reverse feed control lever	1	☆	
	GR574	倒送料扳手 Reverse feed control lever	1		☆
64	GS296-8	倒送料扳手定位螺钉 Screw	1	☆	☆
65	GS296-8	扳手紧固螺钉 Screw	1	☆	☆

6. 润滑组件 Components of lubrication



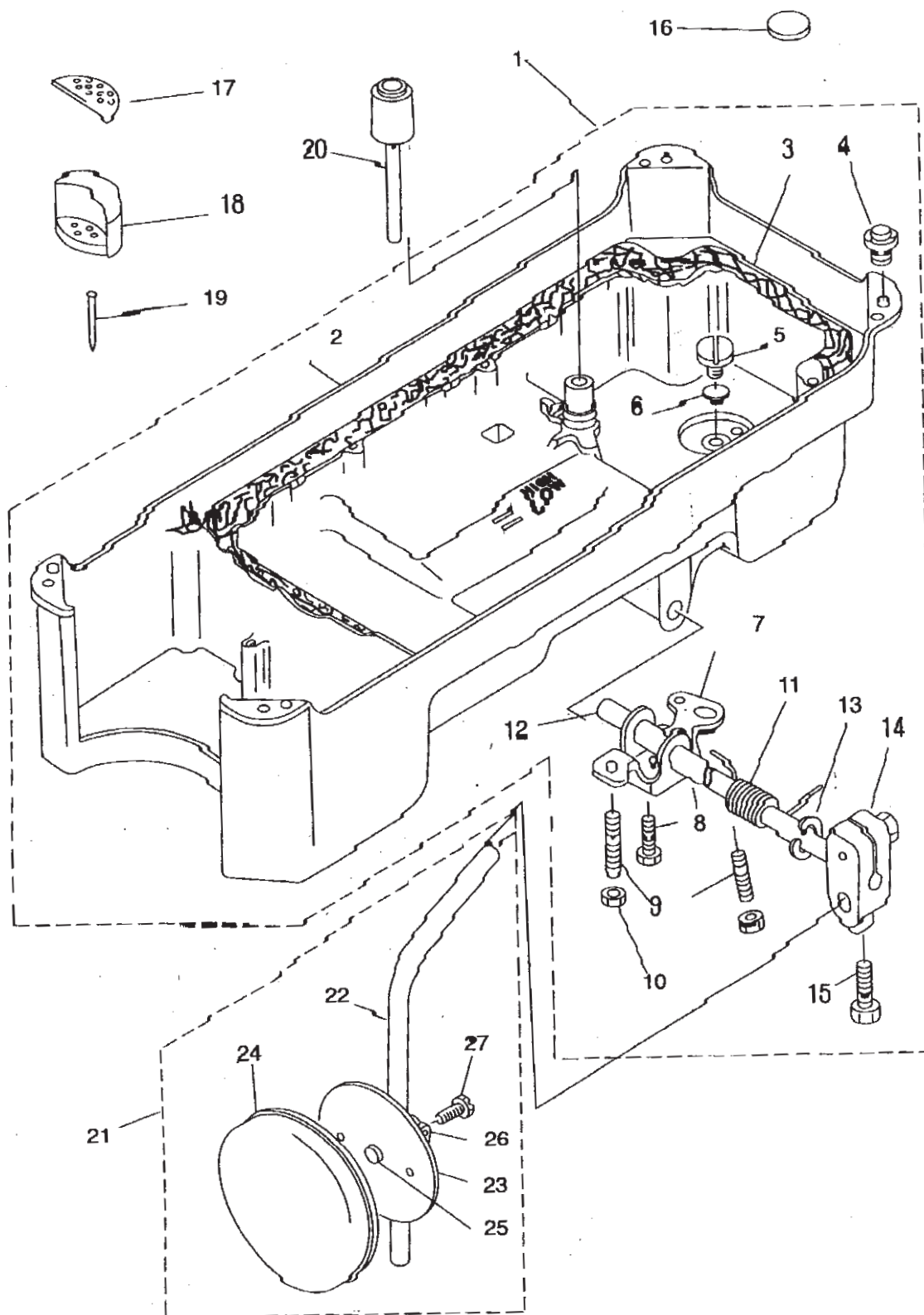
6. 润滑组件 Components of lubrication

序号 REF. No.	件号 PART No.	名称 DESCRIPTION	数量 QTY	中厚料 For Light medium materials	厚料 For heavy materials
1	GR2058/21	油泵部件 Part of oil pump	1	☆	☆
2	GR425-8	油泵安装板 Installation plate of oil pump	1	☆	☆
3	GR2060	油泵体分部件 Lubricating oil pump	1	☆	☆
4	GO339	油泵体衬套 Bush	1	☆	☆
5	GR2063/2	油泵盖部件 Cover of oil pump	1	☆	☆
6	GR2062	油泵叶轮托板 Supporting plate of impeller	1	☆	☆
7	GR2061	油泵叶轮 Impeller of oil pump	1	☆	☆
8	GS554	油泵盖螺钉 Screw	3	☆	☆
9	GR2067	回油柱塞 Plunger of oil return	1	☆	☆
10	GS564	柱塞螺钉 Screw	1	☆	☆
11	GW308	柱塞簧 Spring	1	☆	☆
12	GR1550	安装止退垫圈 Washer	3	☆	☆
13	GS196	油泵安装螺钉 Screw	3	☆	☆
14	GR668-8	上轴供油管接头 Junction of oil supplying of upper shaft	1	☆	☆
15	GS053	油泵螺钉 Screw	3	☆	☆
16	GR766-8	旋梭供油管 Oil supplying of lower shaft	1	☆	☆
17	GR434-8	下轴后套油毡 Oil wick	1	☆	☆
18	GR671-8	旋梭供油管压板 Pressing plate	1	☆	☆
19	GS353-8	压板螺钉 Screw	1	☆	☆
20	GS352-8	旋梭油量调节螺钉 Screw	1	☆	☆
21	GW195-8	旋梭油量调节弹簧 Adjusting spring	1	☆	☆
22	GR438-8	挑线油箱组件 Take up oil tank Components	1	☆	☆
23	GR436-8	挑线杆、销油线 Pin oil wick of thread bar	3	☆	☆
24	GR443-8	上轴前套油线 Oil wick	1	☆	☆
25	GR437-8	挑线油箱毛毡 Felt of oil tank	1	☆	☆
26	GS079	挑线油箱安装螺钉 Screw	1	☆	☆
27	GR438-8	针杆连杆油线 Oil wick	1	☆	☆
28	GR444-8	挑线油箱供油管 Oil supplying tube	1	☆	☆
29	GR446-8	上轴供油管压板 Base of oil supply tube	1	☆	☆
30	GS213-8	上轴供油管压板螺钉 Screw	1	☆	☆
31	GR451-8	上轴油量调节阀体 Adjusting valve body	1	☆	☆
32	GW176-8	弹簧 Spring	1	☆	☆
33	GR431-8	垫圈 Washer	1	☆	☆
34	GR430-8	阀芯 Valve	1	☆	☆
35	GX187-8	销 Pin	1	☆	☆
36	GR449-8	上轴供油管 Oil tube of upper shaft	1	☆	☆
37	GR452-8	中轴供油管 Oil tube of middle bush	1	☆	☆
38	GR454-8	上轴输油管接头 Joint of oil tube of upper shaft	1	☆	☆
39	GR453-8	油管供油管 Oil tube of oil window	1	☆	☆
40	GR1561	油窗 Oil window	1	☆	☆

6. 润滑组件 Components of lubrication

序号 REF. No.	件号 PART No.	名称 DESCRIPTION	数量 QTY	中厚料 For Light medium materials	厚料 For heavy materials
41	GR1562	油窗O形圈 O-ring	1	☆	☆
42	GR768-8	竖油管 Upright oil tube	1	☆	☆
43	GR447-8	回油管 Oil returned pipe	1	☆	☆
44	GR1566	回油管夹头 Head of oil felt presser	1	☆	☆
45	GS33	回油管夹头螺钉 Screw	1	☆	☆
46	GR456-8	回油过滤毛毡 Felt of oil returned filter	1	☆	☆
47	GR769-8	油泵油塞 Oil plug	1	☆	☆

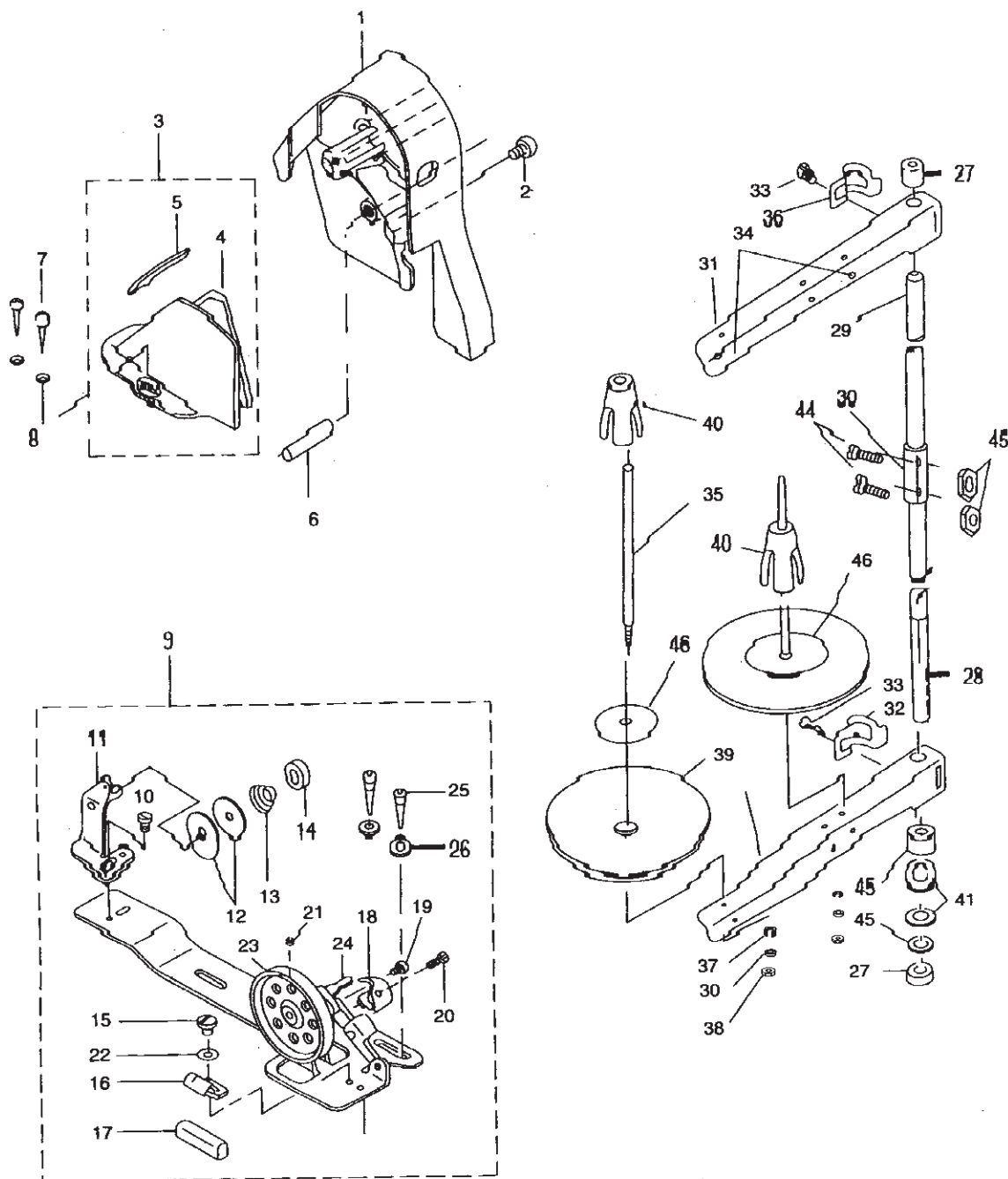
7. 油盘膝抬压脚组件 Components of oil reservoir knee lifting presser foot



7. 油盘膝抬压脚组件 Components of oil reservoir knee lifting presser foot

序号 REF. No.	件号 PART No.	名称 DESCRIPTION	数量 QTY	中厚料 For Light medium materials	厚料 For heavy materials
1	GR680/20-8	油盘部件 Oil reservoir components	1	☆	☆
2	GR681-8	油盘 Oil reservoir	1	☆	☆
3	GR682-8	油盘垫 Cushion	1	☆	☆
4	GR683-8	机头座垫 Head Cushion	4	☆	☆
5	GS355-8	排油孔螺钉 Screw	2	☆	☆
6	GR684-8	排油孔螺钉O形圈 "O" ring	2	☆	☆
7	GH345-8	抬压脚双向曲柄 Crank	1	☆	☆
8	GS356-8	双向曲柄螺钉 Screw	1	☆	☆
9	GS357-8	双向曲柄限位调节螺钉 Screw 15/64×28L=30	2	☆	☆
10	GL170-8	双向曲柄限位调节螺母 Screw 15/64×28	2	☆	☆
11	GW196-8	双向曲柄扭簧 Twisting spring	1	☆	☆
12	GZ238-8	抬压脚轴 Shaft	1	☆	☆
13	GR688-8	抬压脚轴开口挡圈 Split ring	1	☆	☆
14	GR689-8	抬压脚操纵杆节头 Adjusting bar joint	1	☆	☆
15	GS358-8	操纵杆节头螺钉 Screw 9/32×20L=20	2	☆	☆
16	GR685-8	油盘磁铁 Magnet	1	☆	☆
17	GR686-8	油盘座垫 Cushion	2	☆	☆
18	GR687-8	油盘支座 Braket	2	☆	☆
19	GBX141-8	油盘座钉 Bracket pin	4	☆	☆
20	GH344-8	抬压脚顶销 Top pin	1	☆	☆
21	GR690/6	操纵杆部件 Adjusting Components	1	☆	☆
22	GR691-8	操纵杆 Adjusting bar	1	☆	☆
23	GR692-8	操纵板 Control plate	1	☆	☆
24	GR693-8	操纵板软垫 Cushion	1	☆	☆
25	GR694-8	操纵杆垫 Cushion	1	☆	☆
26	GR695-8	操纵杆节头 Joint	1	☆	☆
27	GS359-8	节头螺钉 Screw 15/64×28L=15	1	☆	☆

8. 皮带罩、绕线器与过线架组件 Belt cover, bobbin winder & thread stand components



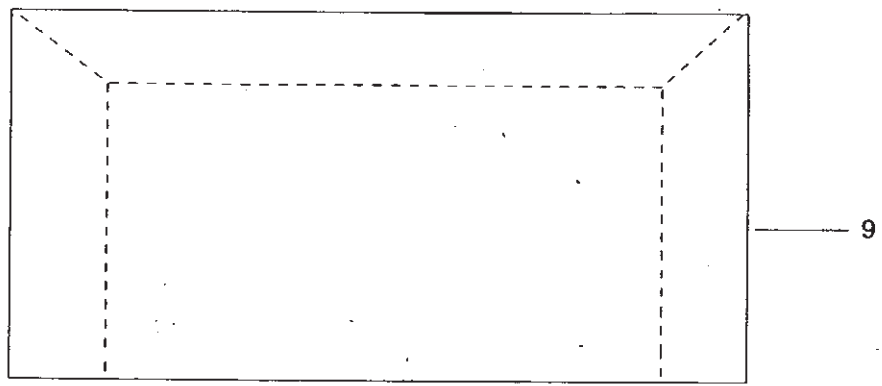
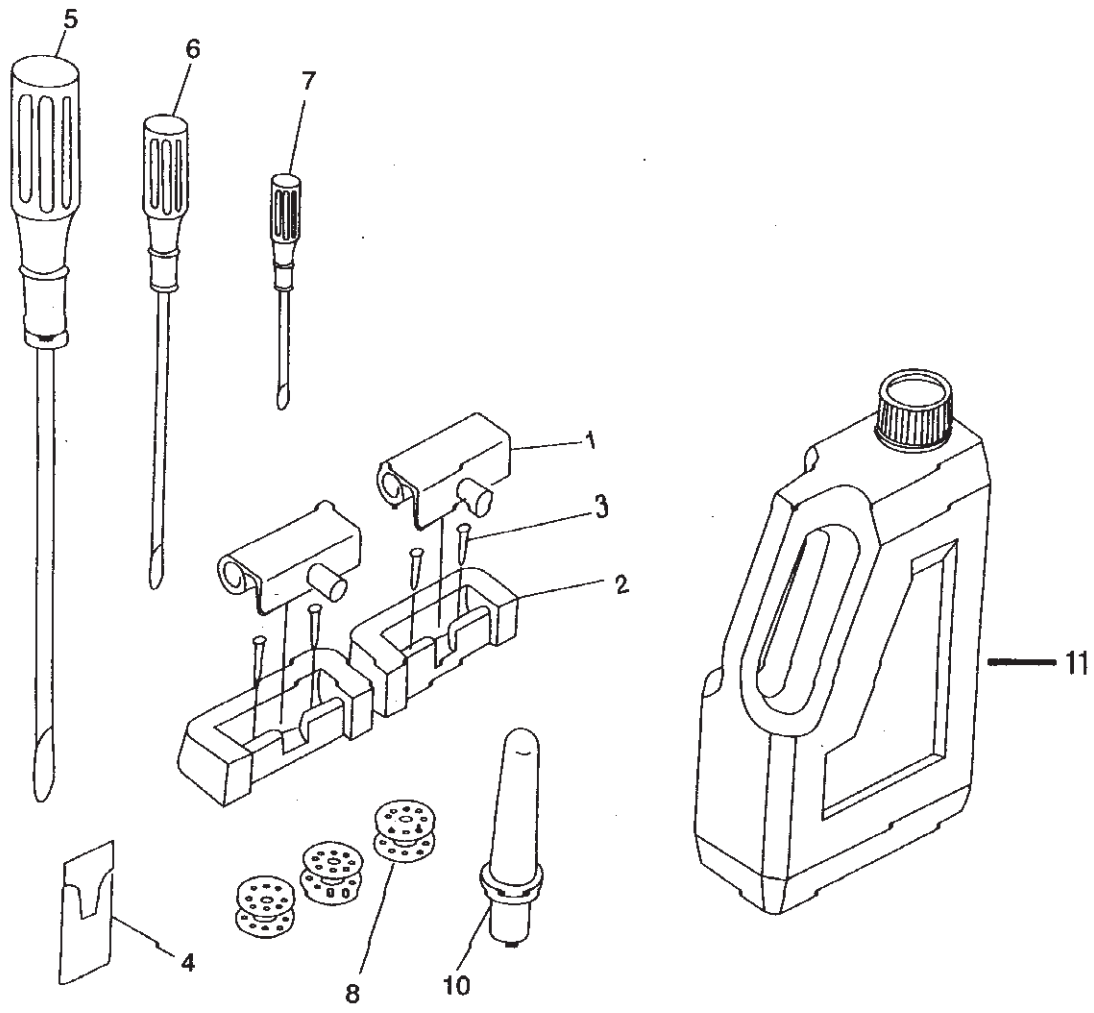
8. 皮带罩、绕线器与过线架组件 Belt cover, bobbin winder & thread stand components

序号 REF, No.	件号 PART No.	名称 DESCRIPTION	数量 QTY	中厚料 For Light medium materials	厚料 For heavy materials
1	GR1122-8	上轮护罩 Cover of upper wheel	1	☆	☆
2	GS300-8	上轮护罩螺钉 Screw	3	☆	☆
3	GK155/3-8	上轮后罩壳部件 Back cover component of up wheel	1	☆	☆
4	GK155-8	上轮后罩壳 Back cover component of up wheel	1	☆	☆
5	GK156-8	后罩壳盖 Back cover of up wheel	1	☆	☆
6	GS392-8	罩壳支柱 Back cover pole	1	☆	☆
7	GBS204-8	后罩壳安装木螺钉 Screw	2	☆	☆
8	GB4210-8	木螺钉垫圈 Wood screw washer	2	☆	☆
9		绕线器部件 Thread winding component	1	☆	☆
10	GS368-8	过线架紧固螺钉 Screw 11/64X40L=7.8	1	☆	☆
11		过线座部件	1	☆	☆
12	GR712-8	过线夹线板 Plate	1	☆	☆
13	GW199-8	过线夹线簧 Spring	1	☆	☆
14	GL171-8	过线夹线螺母 Nut	2	☆	☆
15	GS365-8	制动垫夹紧螺钉 Screw 11/64X40L=5	1	☆	☆
16	GR709-8	制动垫夹 Stop washer clip	1	☆	☆
17	GR708-8	绕线轮制动垫 Washer	1	☆	☆
18	GW198-8	满线跳板簧 Spring	1	☆	☆
19	GS364-8	绕线架连杆轴位螺钉 Screw 1/8X44L=12.5	1	☆	☆
20	GS366-8	满线跳板螺钉 Screw	1	☆	☆
21	GS363-8	绕线轮螺钉 Screw	1	☆	☆
22	GR819-8	制动垫夹紧螺钉垫圈 Washer	1	☆	☆
23	GP148-8	绕线轮 Winding wheel	1	☆	☆
24	GZ239-8	绕线轴 Winding shaft	1	☆	☆
25	GBS204-8	绕线器木螺钉 Screw	2	☆	☆
26	GBR210-8	绕线器木螺钉垫圈 Washer	2	☆	☆
27	GR713-8	线架杆顶防护橡皮 protective rubber of thread bar top	1	☆	☆
28	GZ240-8	线架杆下节 Down half of thread bar	1	☆	☆
29	GZ241-8	线架杆上节 Upper half of thread bar	1	☆	☆
30	GR714-8	接架杆接头 Connecting head of connecting bar	1	☆	☆
31	GR715-8	线架过线杆 Thread-running bar of thread stand	2	☆	☆
32	GR716-8	线架过线夹 Thread-running clip of thread stand	2	☆	☆
33	GS369-8	线架过线夹螺钉 Thread-running clip screw of thread stand	2	☆	☆
34	GR717-8	过线圈 Thread-running ring	2	☆	☆
35	GS370-8	线盘钉 Thread plate nail	2	☆	☆
36	GR718-8	线盘钉弹簧垫 Spring washer of thread plate nail	2	☆	☆
37	GR719-8	线盘钉垫圈 Washer of thread plate nail	2	☆	☆
38	GL172-8	线盘钉螺母 Nut of thread plate nail	2	☆	☆
39	GR720-8	线盘 Thread plate	2	☆	☆
40	GR721-8	线团防松垫 Thread reel lock bed	2	☆	☆

8. 皮带罩、绕线器与过线架组件 Belt cover, bobbin winder & thread stand components

序号 REF. No.	件号 PART No.	名称 DESCRIPTION	数量 QTY	中厚料 For Light medium materials	厚料 For heavy materials
41	GR722-8	线架杆紧固螺母垫圈 Fastening nut washer of thread bar	2	☆	☆
42	GR723-8	紧固螺母弹簧垫圈 Spring washer of fastening nut	1	☆	☆
43	GL173-8	线架杆紧固螺母 Fastening nut of thread bar	2	☆	☆
44	GS401-8	线架杆接头螺钉 Connecting head screw of connecting bar	2	☆	☆
45	GL134-8	线架杆接头螺母 Connecting nut of connecting bar	2	☆	☆
46	GR750-8	线盘软垫 Soft cushion of thread plate	2	☆	☆

9. 附件 Accessories



9、附件 Accessories

序号 REF. No.	件 号 PART No.	名 称 DESCRIPTION	数量 QTY	中 厚 料 For Light medium materials	厚 料 For heavy materials
1	GR696/2-8	机头连接钩部件 Components of machine head connecting hook	2	☆	☆
2	GR697-8	机头连接钩座 Machine head connecting hook seat	2	☆	☆
3	GBX141-8	机头连接钩座钉 Seat nail of machine head connecting hook	4	☆	☆
4	GV132-8	机针 Machine needle	1包	☆	☆
5	GR700-8	螺丝刀 (大) Screw driver (L)	1	☆	☆
6	GR701-8	螺丝刀 (中) Screw driver (M)	1	☆	☆
7	GR702-8	螺丝刀 (小) Screw driver (S)	1	☆	☆
8	GN139-8	梭心 Shuttle	3	☆	☆
9	GF101-8	机头罩 Machine head cover	1	☆	☆
10	GBR211-8	机头支柱 Machine head pole	1	☆	☆
11	GR703/3-8	油箱部件 Oil case components	1	☆	☆