

ARTISAN

AK 20 Cutting Machine

INSTRUCTION MANUAL

NOTE: Carefully read and understand all safety instructions before beginning use this machine.
Retain this Instructional Manual for future reference.

1、USAGE AND FEATURE

Model 20 thin leather cutting machine is suitable for cutting leather, artificial leather and plastic cloth ETC. It is one of the necessary facilities to process all kinds of leather production at present. this machine have many advantages beautiful appearance, steady capacity, expedient operation, high efficiency and long life.

2、MAIN SPECIFICATION

MODEL	20
FEET SPEED	6.5mm/min
CUTTING THICKNESS	<5mm
CUTTING WIDTH	2~340mm
MEASUREMENT	790×330×365(length×width×high)
NET WEIGHT	93.5kg
MOTOR POWER	550W 1400n/min
KNIFE SYSTEM	φ 80×1× φ 40

3、PREPARING BEFORE USING

a, In order to avoid this machine rust, it was safeguarded by lubricating oil. When you take this machine from box, please swab down the machine's surface with clean and soft dishcloth, because before box it up, perhaps after a period of time and line-haul, this machine can be covered with dust or sclerotic axunge.

b, Please check this machine carefully after cleanning the axunge,

and whether the strap wheel is good or not by hand. Because this machine maybe shaken consumingly by transit, so the component become flexible.

- c, Please use the 24# lubricating oil for gear box, lossing the inner six-square screw on the top of machine, injecting the lubricating oil into the gear box, while lubricating oil reaches the half gear box.
- d, Please join this machine and table top with four bolts, while you install the motor under the table top, you should aimedd at two strap wheels, then screw down the bolts and nuts of machine.

4, USING AND ADJUSTING

- a, Adjusting of table top: please encase the table top into the left of this model, (manipulator facing the machine), before hand srew four bolts, Attention: the sides of long slot couldn't frictionze with the feed glue wheel, keep 5 mm space, and then screw down the bolts of table top.
- b, Installing knife: please loosen the left hand-handle of this model, take out the bearing plate of principal axis, and loosen the principal axis, screw down the nuts(left dog), take out of brush, then install the this model, screw down the nuts and hand-handles.
- c, Adjusting the feed shaft and principal axis: please put the hand-handle(look at chart 1)to the top, then the feed wheel can touch the knife. If the knife couldn't cut the leather off, please

adjust the two bolts(look at chart 1) on the barket, then screw down nut. Attention: If the knife couldn't cut the leather off still, you should adjust the adjust bolt (look at chart 2) of front barcket, loosen the two bolts first, then loosen the nuts. If the problem is the solved, please screw the nuts and bolts.

d, Adjusting the feed block: According to the width of the leather, you should adjusting the feed block, a knife need a feed block, loosen the feed block first and screw the bolt, move left along the shaft aspect to the first knife. Cut the knife in the slot of the block, the first knife is hold up the leather to go round and round with principal axis. The others feed block move right along the shaft aspect.

e, Anchoring bar intalling: please intall anchoring bar on the right table top according to the brim of leather or cutting width, and then screw down ananchoring bar with dishing nuts on the underside of table top.

5, MAINTENANCE

Please often instead of the lubricator of the oil box and then immit lubricating oil to rotational and slip parts after working period of time. If you don't need using it for a while, please placed this machine the moistureproof and without insolate place.

CHART 1

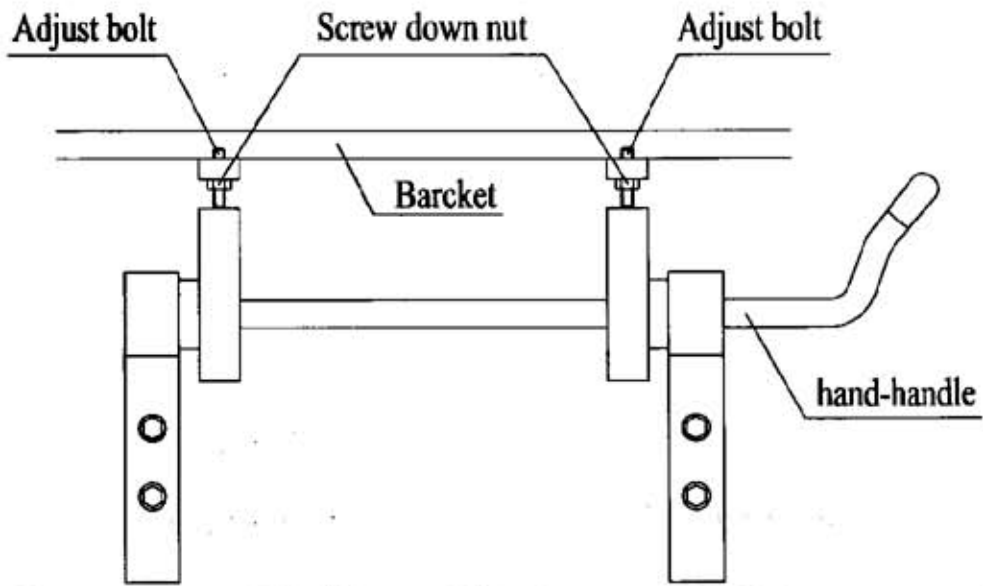
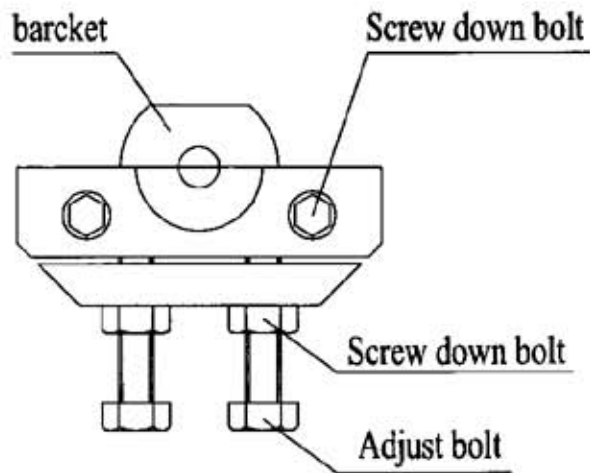


CHART 2



GUIDE OF MODEL 20 THIN LEATHER CUTTING MACHINE

1, Safety plate

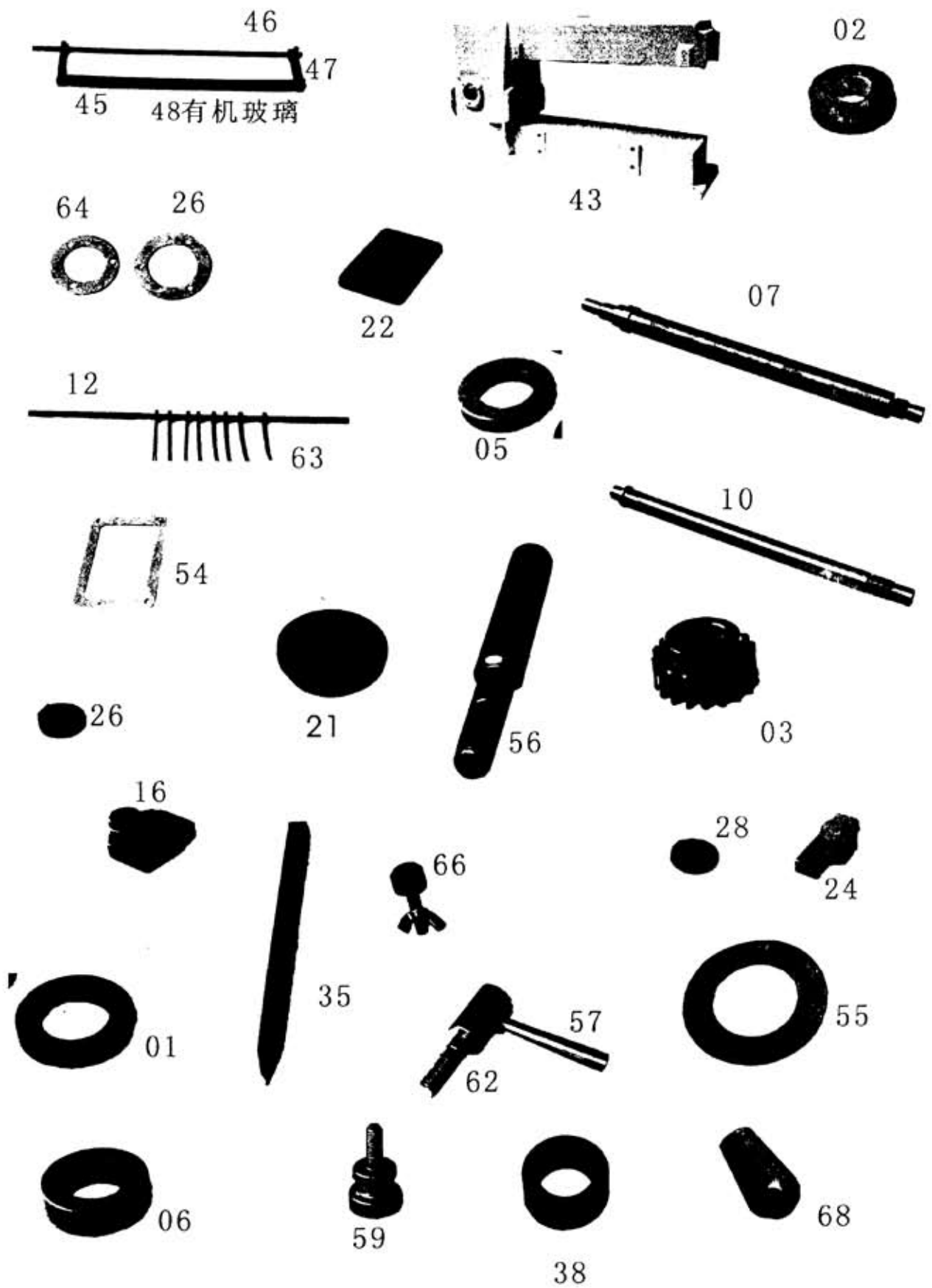
The primary device for safeguard is safety plate. The leather was driven by the feed shaft and principal axis, the feed speed can reach 9.6m/min, at last the leather was cutted by round life. If the machine hasn't the safety plate, the manipulator's hands could be harmed for fatigue or low energies, so the safety plate can protect the manipulator's hands, avoid sundries to enter the dangerous work zone.

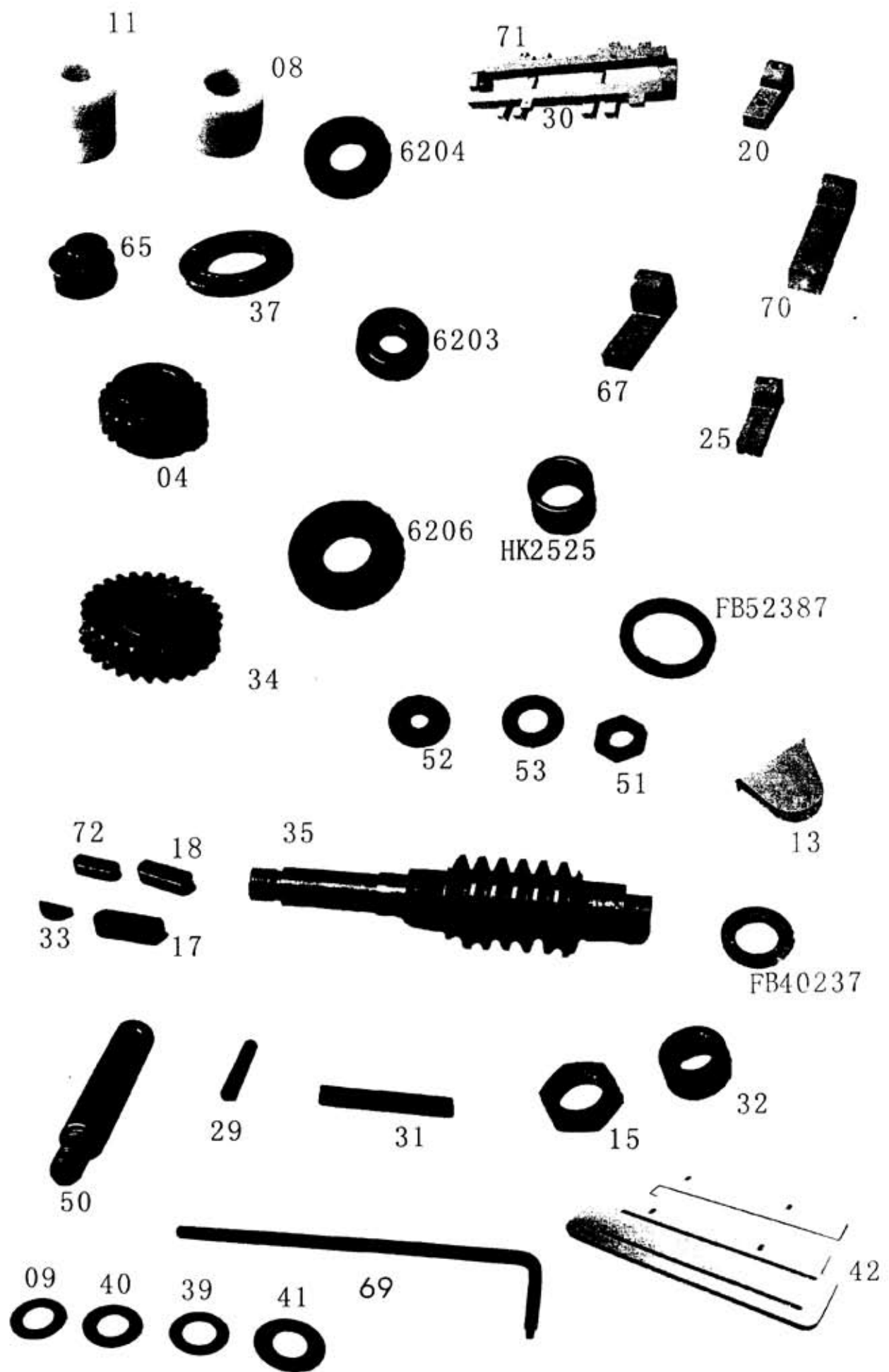
2, Turn the safety plate over

Please turn the safety plate over before you operate this model, then put the brim of leather close with the feed shaft, and then put down the safety plate. It can protect you and press the leather, additional, manipulator could look into this model by safety plate(glass).

All in all, for safety, please attention: if you operate this model, you should put down the safety plate.

MODEL 20 CUTTING MACHINE PARTS LIST





ACCESSORIES TABLE

Serial No.	Specification	Qty.	Remark
1	Clamp knife block 2mm	10	
2	Clamp knife block 3mm	10	
3	Clamp knife block 4mm	10	
4	Round plate knife	8	
5	Hand-handle shaft	1	
6	Hand-handle	1	
7	Table top	1	
8	Strap cover	1	
9	Presser bar	1	
10	Round iron	1	nigresence
11	Inner six-square spanner 2.5mm	1	
12	Inner six-square spanner 3mm	1	
13	Inner six-square spanner 4mm	1	
14	Inner six-square spanner 5mm	1	
15	Inner six-square spanner 6mm	1	
16	Inner six-square bolt M5 × 35	4	nigresence
17	Plate tighten bolt M8 × 35	2	nigresence
18	Dishing nut M8	2	copper
19	Six-square bolt M8 × 75	4	zincification
20	Six-square nut M8	4	zincification
21	Gasket 8	10	zincification
22	Explain book	1	