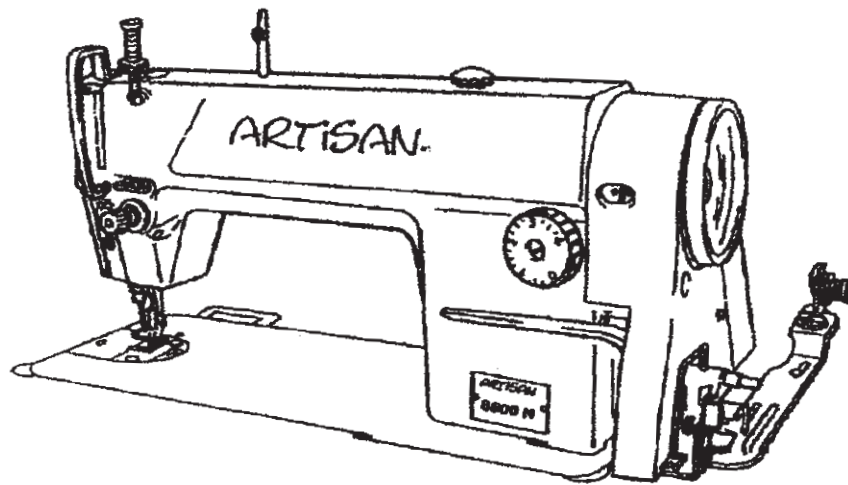


# ARTISAN.

## 8500 N



**High Speed Single Needle  
Lockstitch Sewing Machine**

**OPERATORS MANUAL  
AND  
SPARE PARTS LIST**

## IMPORTANT SAFETY INSTRUCTIONS

Putting sewing systems into operation is prohibited until it has been ascertained that the sewing systems in which these sewing machines will be built into, have conformed with the safety regulations in your country. Technical service for those sewing systems is also prohibited.

1. Observe the basic safety measures, including, but not limited to the following ones, whenever you use the machine.
2. Read all the instructions, including, but not limited to this Instruction Manual before you use the machine. In addition, keep this Instruction Manual so that you may read it at anytime when necessary.
3. Use the machine after it has been ascertained that it conforms with safety rules/standards valid in your country.
4. All safety devices must be in position when the machine is ready for work or in operation. The operation without the specified safety devices is not allowed.
5. This machine shall be operated by appropriately-trained operators.
6. For your personal protection, we recommend that you wear safety glasses.
7. For the following, turn off the power switch or disconnect the power plug of the machine from the receptacle.
  - 7-1 For threading needle(s), looper, spreader etc. and replacing bobbin.
  - 7-2 For replacing part(s) of needle, presser foot, throat plate, looper, spreader, feed dog, needle guard, folder, cloth guide etc.
  - 7-3 For repair work.
  - 7-4 When leaving the working place or when the working place is unattended.
  - 7-5 When using clutch motors without applying brake, it has to be waited until the motor stopped totally.
8. If you should allow oil, grease, etc. use with the machine and devices to come in contact with your eyes or skin or swallow any of such liquid by mistake, immediately wash the contacted areas and consult a medical doctor.

9. Tampering with the live parts and devices, regardless of whether the machine is powered, is prohibited.
10. Repair, remodeling and adjustment works must only be done by appropriately trained technicians or specially skilled personnel. Only spare parts designated by JUKI can be used for repairs.
11. General maintenance and inspection works have to be done by appropriately trained personnel.
12. Repair and maintenance works of electrical components shall be conducted by qualified electric technicians or under the audit and guidance of specially skilled personnel.

Whenever you find a failure of any of electrical components, immediately stop the machine.
13. Before making repair and maintenance works on the machine equipped with pneumatic parts such as an air cylinder, the air compressor has to be detached from the machine and the compressed air supply has to be cut off. Existing residual air pressure after disconnecting the air compressor from the machine has to be expelled. Exceptions to this are only adjustments and performance checks done by appropriately trained technicians or specially skilled personnel.
14. Periodically clean the machine throughout the period of use.

15. Grounding the machine is always necessary for the normal operation of the machine. The machine has to be operated in an environment that is free from strong noise sources such as high-frequency welder.
16. An appropriate power plug has to be attached to the machine by electric technicians. Power plug has to be connected to a grounded receptacle.

17. The machine is only allowed to be used for the purpose intended. Other used are not allowed.
18. Remodel or modify the machine in accordance with the safety rules/standards while taking all the effective safety measures. assumes no responsibility for damage caused by remodeling or modification of the machine.

19. Warning hints are marked with the two shown symbols.



Danger of injury to operator or service staff



Items requiring special attention

## CONTENTS

BEFORE OPERATION .....	
1. SPECIFICATIONS .....	
2. INSTALLATION .....	
3. INSTALLING THE BELT COVER AND BOBBIN WINDER .....	
4. ADJUSTING THE HEIGHT OF THE KNEE LIFTER .....	
5. INSTALLING THE THREAD STAND .....	
6. LUBRICATION .....	
7. ATTACHING THE NEEDLE .....	
8. SETTING THE BOBBIN INTO THE BOBBIN CASE .....	
9. ADJUSTING THE STITCH LENGTH .....	
10. PRESSER FOOT PRESSURE .....	
11. THREADING THE MACHINE HEAD .....	
12. THREAD TENSION .....	
13. THREAD TAKE-UP SPRING .....	
14. ADJUSTING THE THREAD TAKE-UP STROKE .....	
15. NEEDLE-TO-HOOK RELATIONSHIP .....	
16. HIGHT OF THE FEED DOG .....	

## FOR SAFE OPERATION



1. Don't put your hand under the cloth cutting knife and the needle when you turn "on" the power switch or operate the machine.
2. Don't put your hand into the thread take-up cover while the machine is running.
3. Turn OFF the power switch before tilting the machine head or removing the belt cover and the V belt.
4. Never bring your fingers, hair or clothing close to, or place anything on the handwheel, V-belt, bobbin winder wheel or motor during operation.
5. If your machine is provided with a belt cover, finger guard and safety plate, never operate your machine with any of them removed.
6. When tilting the machine head, exercise care not to allow your fingers etc. to be caught under the machine head.
7. When using clutch motors without applying brake, it has to be waited until the motor stopped totally.

## BEFORE OPERATION



To avoid malfunction and damage of the machine, confirm the following.

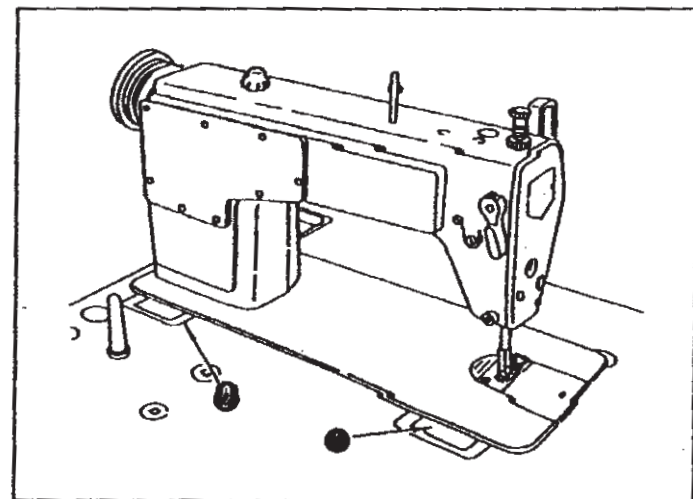
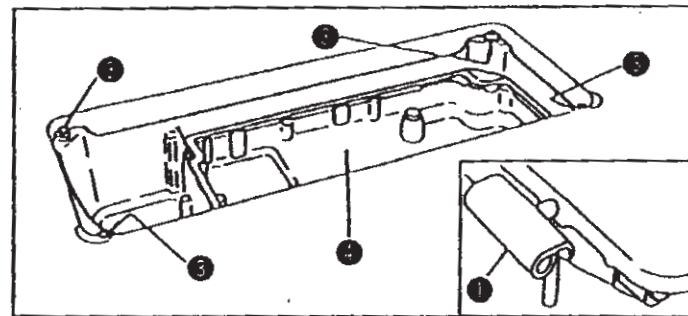
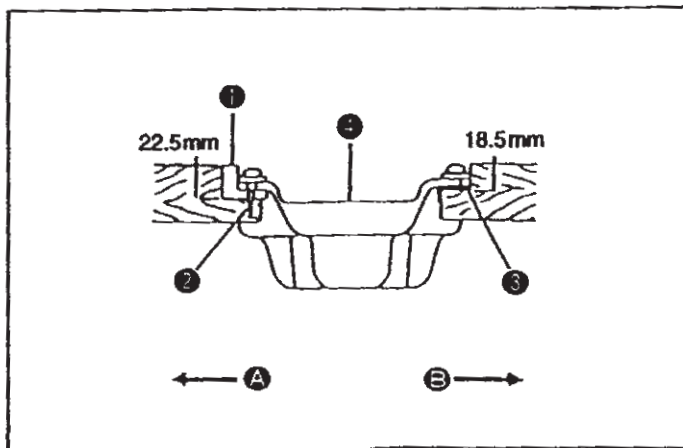
- Before you put the machine into operation for the first time after the set-up, clean it thoroughly. Remove all dust gathering during transportation and oil it well.
- Confirm that the voltage has been correctly set. Confirm that the power plug has been properly connected to the power supply.
- Never use the machine in the state where the voltage type is different from the designated one.
- Confirm that the direction of rotation of the motor pulley is correct.
- Operate your machine at the normal sewing speed or less for the first month after the set-up.

# 1. SPECIFICATIONS

	DDL-8500	DDL-8500A	DDL-8500H
Application	For medium-weight materials	For light-weight materials	For heavy-weight materials
Sewing speed	Max. 5,500 s.p.m.	Max. 4,000 s.p.m.	Max. 4,000 s.p.m.
Stitch length	Max. 5 mm	Max. 4 mm	Max. 5 mm
Presser foot lift (by knee lifter)	Standard 10 mm Max. 13 mm	Standard 10 mm Max. 13 mm	Standard 10 mm Max. 13 mm
Needle	Schmetz 134 #65 -110 (DBx1 #9 -18)	Schmetz 134 #65 -75 (DAx1 #9 -11)	Schmetz 134 #125 -160 (DBx1 #20 - 23)
Lubricating oil			

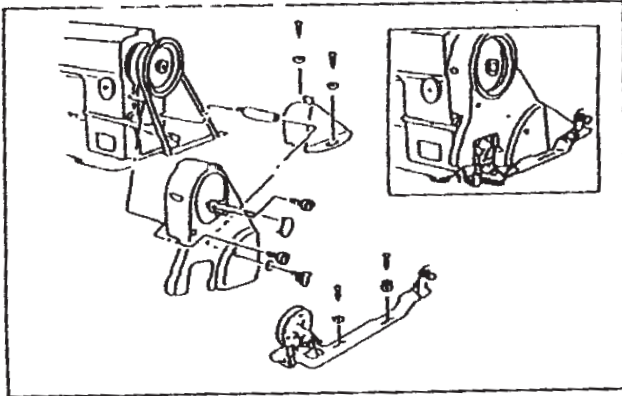
## 2. INSTALLATION

- 1) The oil pan should be installed in such a way that it is securely held in position by the four corners of the machine table groove.
- 2) Fix two rubber seats (1) on side (A) (operator's side) using nails (2) as illustrated above. Fix two cushion seats (3) on side (B) (hinged side) using a rubber-based adhesive. Then place oil pan (4) on the fixed seats.
- 3) Fit hinge (5) into the opening in the machine bed, and fit the machine head to table rubber hinge (6) before placing the machine head on cushions (7) on the four corners.





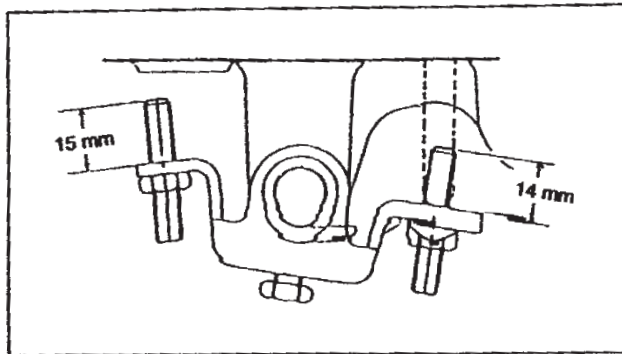
Carry out the following steps of procedure after the power switch has been turned OFF.



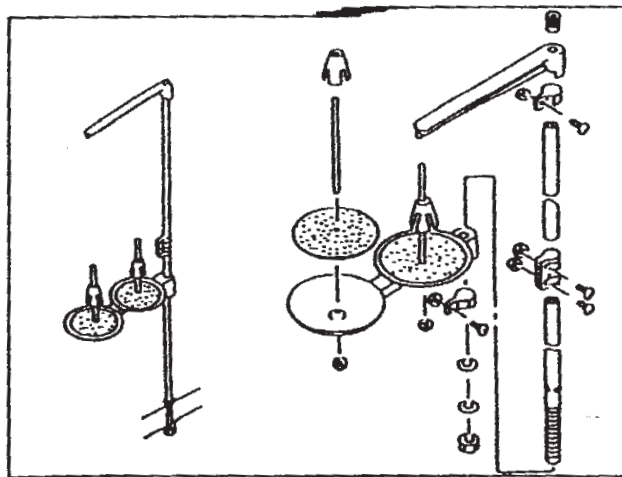
**3. INSTALLING THE BELT COVER AND THE BOBBIN WINDER**



**4. ADJUSTING THE HEIGHT OF THE KNEE LIFTER**



**5. INSTALLING THE THREAD STAND**



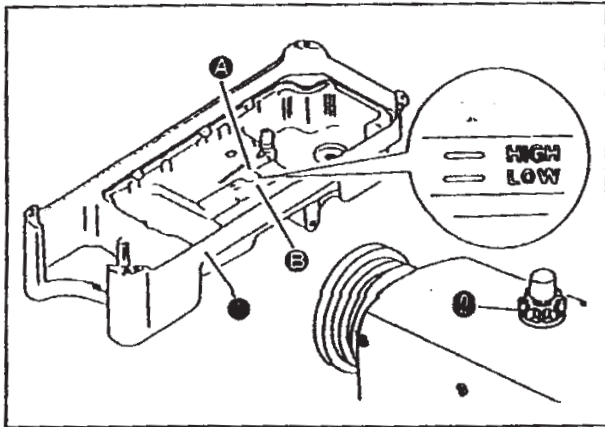


Carry out the following steps of procedure after the power switch has been turned OFF.

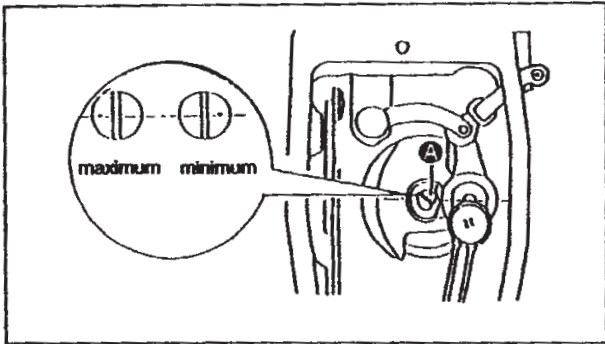
## 6. LUBRICATION

### 1. Information on lubrication

- 1) Fill oil pan (A) with Oil No. 1 up to HIGH mark (B).
- 2) When the oil level lowers below LOW mark (C), refill the oil pan with the specified oil.
- 3) When you operate the machine after lubrication, you will see splashing oil through oil sight window (D) if the lubrication is adequate.



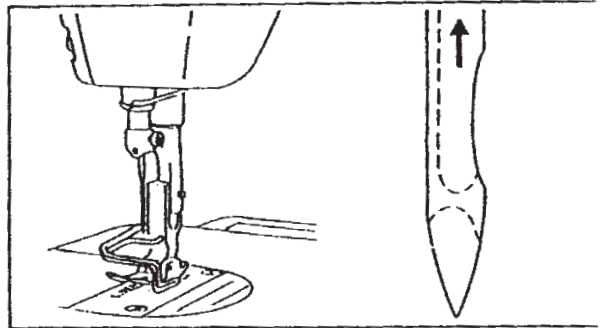
Adjusting the amount of oil supplied to the face plate parts.



Adjusting the amount of oil in the hook

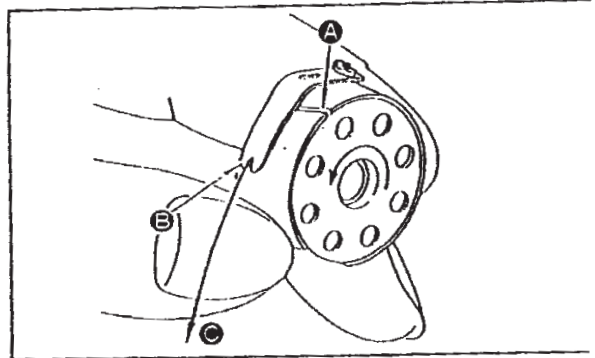


## 7. ATTACHING THE NEEDLE

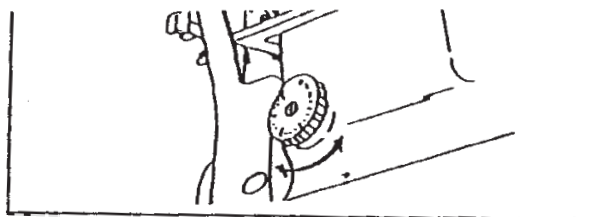


## 8. SETTING THE BOBBIN INTO THE BOBBIN CASE

- 1) Install the bobbin in the bobbin case so that the thread wound direction is counterclockwise.
- 2) Pass the thread through thread slit (A), and pull the thread in direction (B). By so doing, the thread will pass under the tension spring (C) and come out from notch (D).
- 3) Check that the bobbin rotates in the direction of the arrow when thread (E) is pulled.

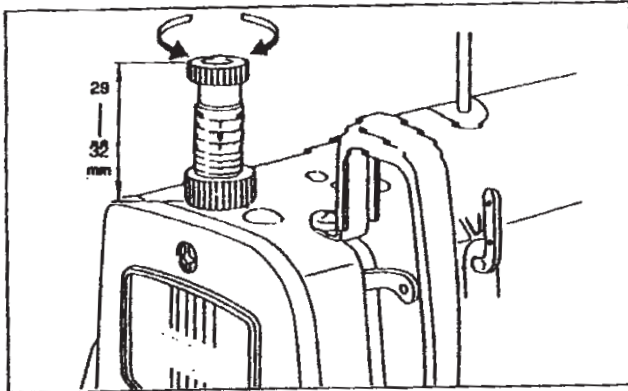


## 9. ADJUSTING THE STITCH LENGTH





Carry out the following steps of procedure after the power switch has been turned OFF.

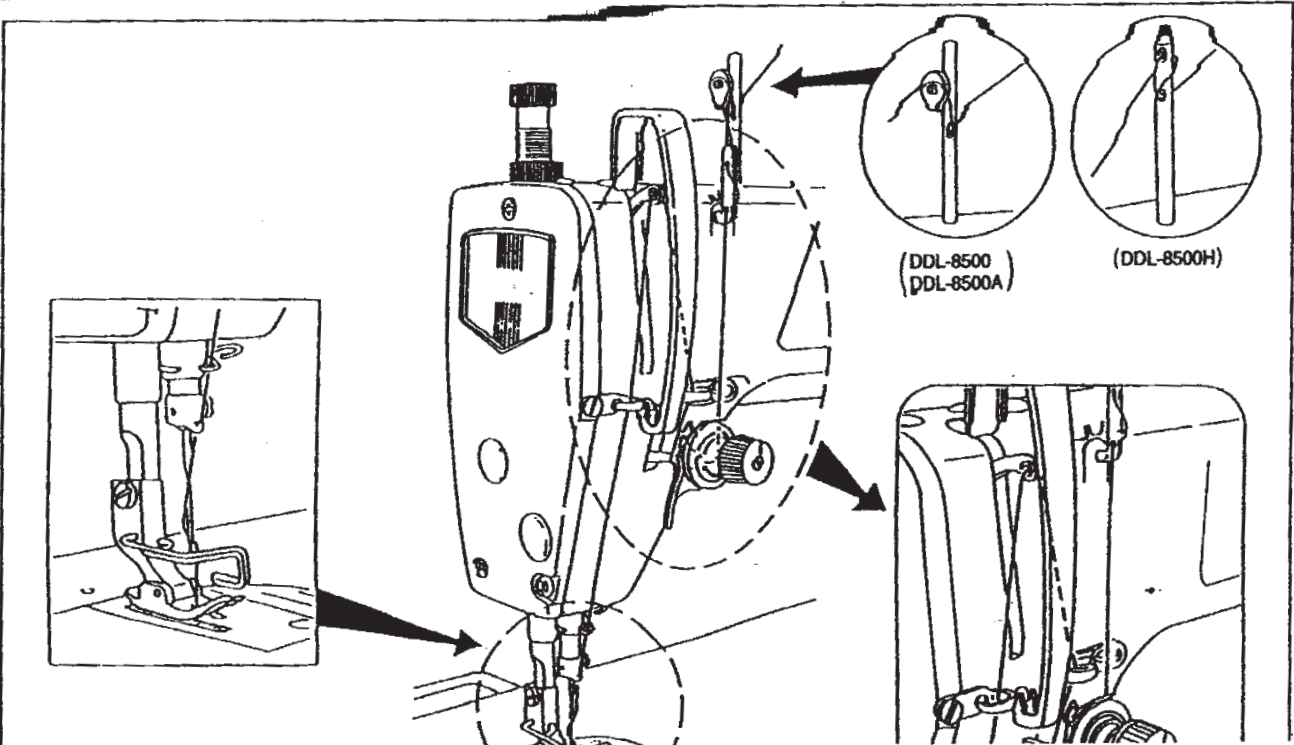


**10. PRESSER FOOT PRESSURE**



Carry out the following steps of procedure after the power switch has been turned OFF.

**11. THREADING THE MACHINE HEAD**



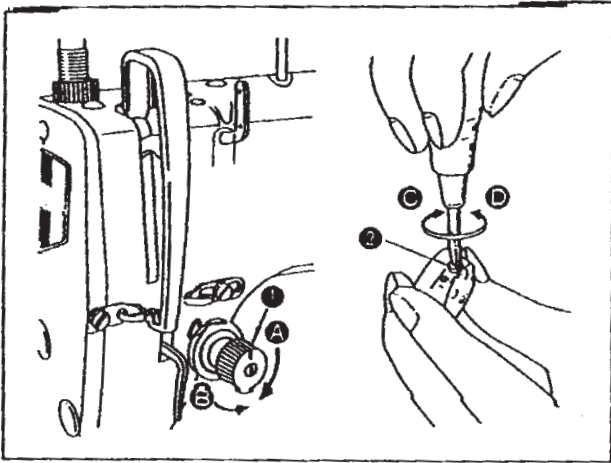
## 12. THREAD TENSION

### 1. Adjusting the needle thread tension

- 1) Adjust the needle thread tension using tension adjust nut ● according to the sewing specifications.
- 2) As you turn nut ● clockwise (in direction ⊕), the needle thread tension will increase.
- 3) As you turn nut ● counterclockwise (in direction ⊖), the tension will decrease.

### 2. Adjusting the bobbin thread tension

- 1) As you turn tension adjust screw ● clockwise (in direction ⊕), the bobbin thread tension will increase.
- 2) As you turn screw ● counterclockwise (in direction ⊖), the bobbin thread tension will decrease.



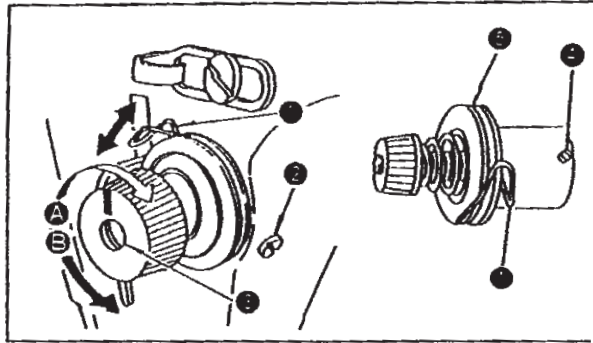
## 13. THREAD TAKE-UP SPRING

### 1. Changing the stroke of thread take-up spring ●

- 1) Loosen setscrew ●.
- 2) As you turn tension post ● clockwise (in direction ⊕), the stroke of the thread take-up spring will be increased.
- 3) As you turn the knob counterclockwise (in direction ⊖), the stroke will be decreased.

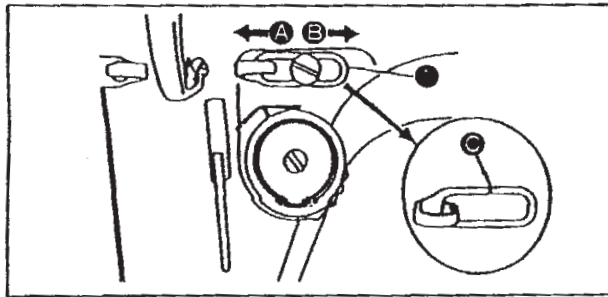
### 2. Changing the pressure of thread take-up spring ●

- 1) Loosen setscrew ●, and remove thread tension (asm.) ●.
- 2) Loosen setscrew ●.
- 3) As you turn tension post ● clockwise (in direction ⊕), the pressure will be increased.
- 4) As you turn the post counterclockwise (in direction ⊖), the pressure will be decreased.



## 14. ADJUSTING THE THREAD TAKE-UP STROKE

- 1) When sewing heavy-weight materials, move thread guide ● to the left (in direction ⊕) to increase the length of thread pulled out by the thread take-up.
- 2) When sewing light-weight materials, move thread guide ● to the right (in direction ⊖) to decrease the length of thread pulled out by the thread take-up.
- 3) Normally, thread guide ● is positioned in a way that marker line ● is aligned with the center of the screw.





### 15. NEEDLE-TO-HOOK RELATIONSHIP

1. Adjust the timing between the needle and the hook as follows:

- 1) Turn the handwheel to bring the needle bar down to the lowest point of its stroke, and loosen setscrew ①.

(Adjusting the needle bar height)

- 2) (For a DB needle) Align marker line A on needle bar ② with the bottom end of needle bar lower bushing ③, then tighten setscrew ④.

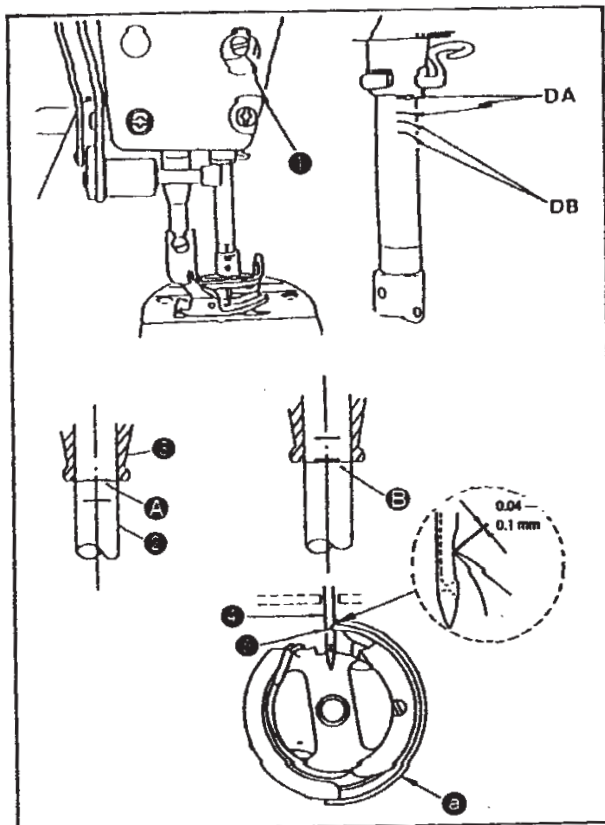
(For a DA needle) Align marker line DA on needle bar ⑤ with the bottom end of needle bar lower bushing ⑥, then tighten setscrew ⑦.

(Adjusting position of the hook ⑧)

- 3) (For a DB needle) Loosen the three hook setscrews, turn the handwheel, and align marker line B on ascending needle bar ⑨ with the bottom end of needle bar lower bushing ⑩.

(For a DA needle) Loosen the three hook setscrews, turn the handwheel, and align marker line DA on ascending needle bar ⑪ with the bottom end of needle bar lower bushing ⑫.

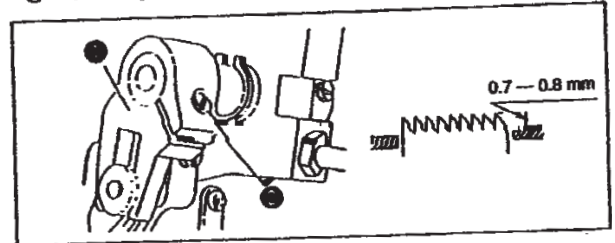
- 4) After making the adjustments mentioned in the above steps, align hook blade point ⑬ with the center of needle ⑭. Provide a clearance of 0.04 mm to 0.1 mm (reference value) between the needle and the hook, then securely tighten setscrews in the hook.



### 16. HEIGHT OF THE FEED DOG

To adjust the height of the feed dog:

- ① Loosen screw ① of crank ②.
- ② Move the feed bar up or down to make adjustment.
- ③ Securely tighten screw ③.



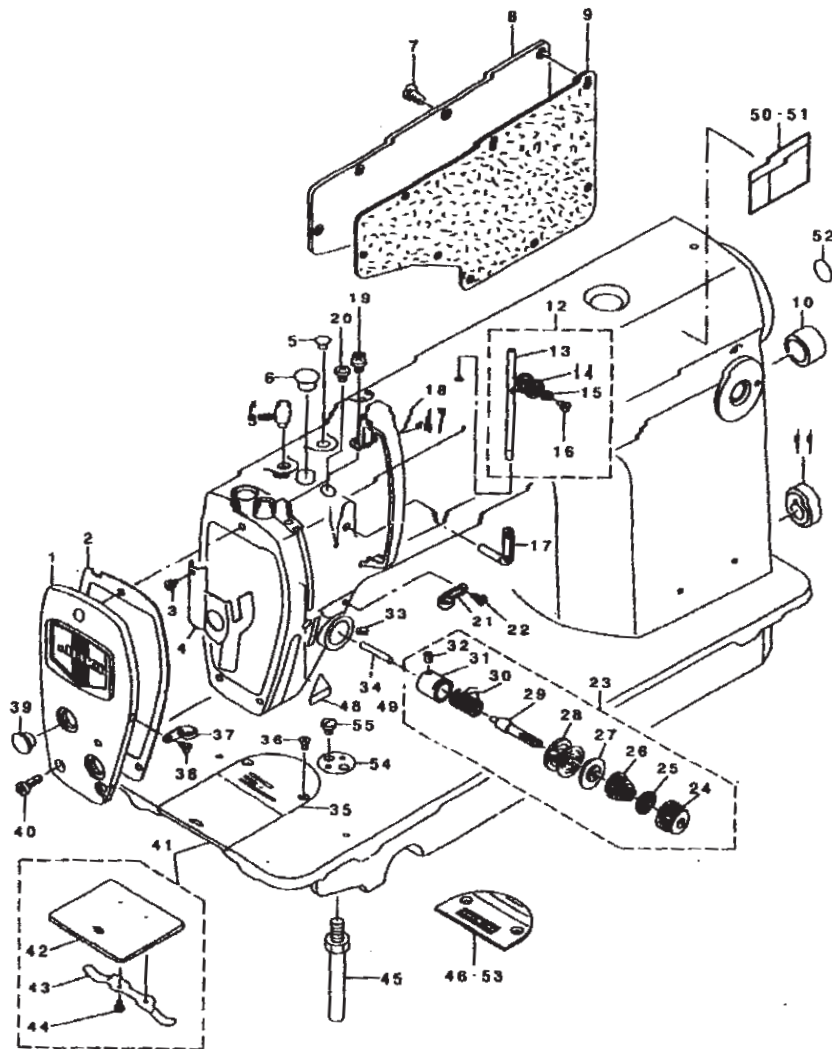
High Speed 1-Needle Lockstitch Industrial  
Sewing Machine

# DDL-8500 Series

## PARTS LIST

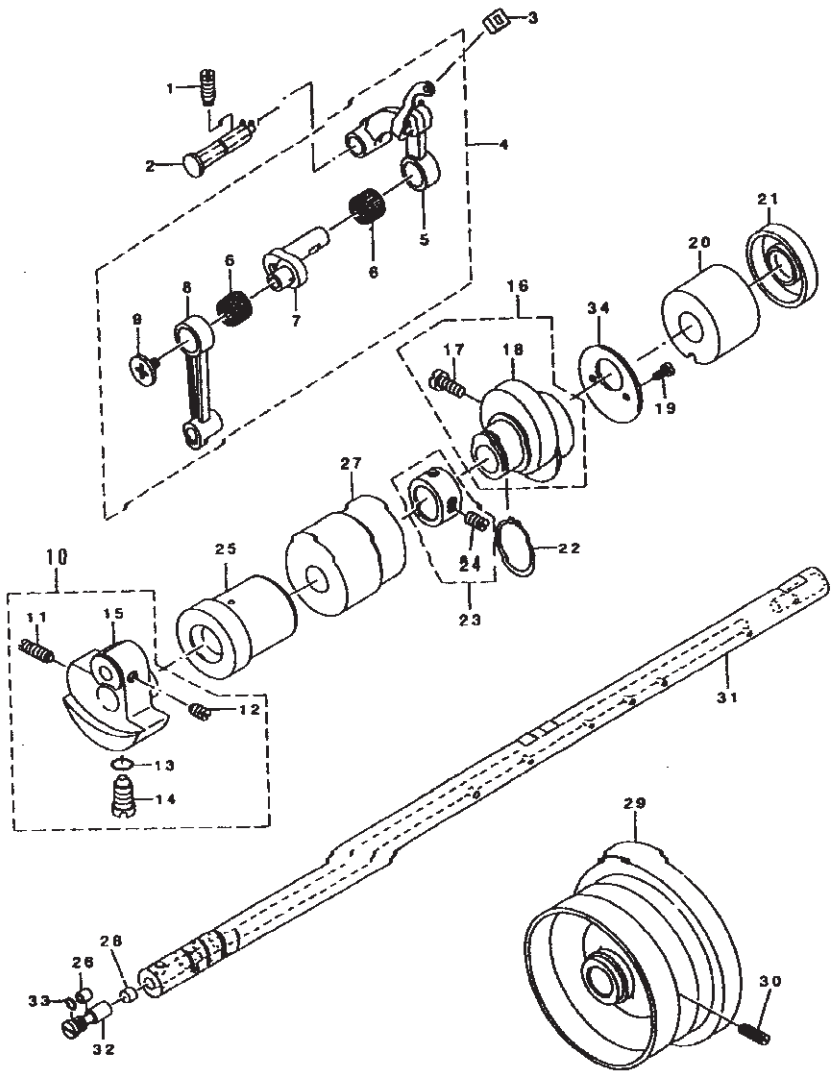
### 1. MACHINE FRAME & MISCELLANEOUS COVER

#### COMPONENTS



REF. NO	NOTE	PART NO.	DESCRIPTION	Qty
1		229-02159	FACE PLATE ASM.	1
2		229-02209	FACE PLATE GASKET	1
3		SS-6080410-SP	SCREW 1/8-44 L=4	1
4		229-00757	ARM OIL SHIFLD ASM.	1
5		TA-0850604-RO	RUBBER PLUG	2
6		TA-1250705-RO	RUBBER PLUG	1
7		SS-4120915-SP	SCREW 3/16-28 L=9	8
8		229-00401	SIDE PLATE	1
9		110-00819	GASKET	1
10		TA-2000502-RO	RUBBER PLUG	1
11		TA-2101002-RO	RUBBER PLUG	1
12		229-32552	THREAD GUIDE ROD ASM.	1
13		229-32503	THREAD GUIDE ROD	(1)
14		229-32602	TENSION DISK	(2)
15		229-32701	TENSION SPRING	(1)
16		SD-0380552-SL	HINGE SCREW D=3.8 H=5.5	(1)
17		229-20706	TWO-HOLE THREAD EYELET	1
18		229-00809	THREAD TAKE-UP LEVER COVER	1
19		SS-4120615-SP	SCREW 3/16-28 L=6	1
20		SS-4120615-SP	SCREW 3/16-28 L=6	1
21		229-20508	ARM THREAD GUIDE A	1
22		110-01500	SCREW	1
23		229-45356	THREAD TENSION ASM.	1
24		229-21308	TENSION NUT	(1)
25		229-21407	ROTATING STOPPER	(1)
26		229-21704	TENSION SPRING A	(1)
27		229-21803	THREAD TENSION DISK PRESSER	(1)
28		229-21506	THREAD TENSION DISK	(2)
29		229-21209	TENSION POST	(1)
30		229-21605	TAKE-UP SPRING	(1)
31		229-45307	TENSION POST SOCKET	(1)
32		SS-8090670-SP	SCREW 9/64-40 L= 5.5	(1)
33		SS-8150710-SP	SCREW 15/64-28 L=7	1
34		B3118-552-EOO	TENSION RELEASING	1
35		110-28008	THROAT PLATE	1
36		SS-2110920-TP	SCREW 11/64-40 L=8.5	2
37		229-20607	ARM THREAD GUIDE B	1
38		SS-6110610-TP	SCREW 11/64-40 L=6	1
39		TA-1250406-RO	RUBBER PLUG D=12.5 L=4	2
40		SS-4120915-SP	SCREW 3/16-28 L=9	3
41		229-01250	BED SLIDE ASM.	1
42		229-01201	SLIDE PLATE	(1)
43		229-01300	BED SLIDE SPRING	(1)
44		SS-6060210-SP	SCREW 3/32-56 L= 1.9	(2)
45		229-01003	BED SCREW STUD	4
46	#01	B1109-012-108	THROAT PLATE (1)	1
47	#02	180-77503	THREAD TAKE-UP LEVER COVER	1
48	#02	CH-3002000-01	ATTENTION SEAL	1
49	#03	CH-3002000-B1	LABEL (16)	1
50	#03	CH-3002001-01	SAFETY LABEL, 1 (SMALL)	1
51	#04	CH-3002001-A1	SAFETY LABEL., 3 (SMALL).	1
52		100-04109	GROUND MARK	1
53	#05	B1109-552-000	THROAT PLATE	1
54		229-02605	SULER STOPPER	1
55		SS-7110540-SP	SCREW 11/64-40 L=5	2

## 2. MAIN SHAFT & THREAD TAKE-UP LEVER COMPONENTS

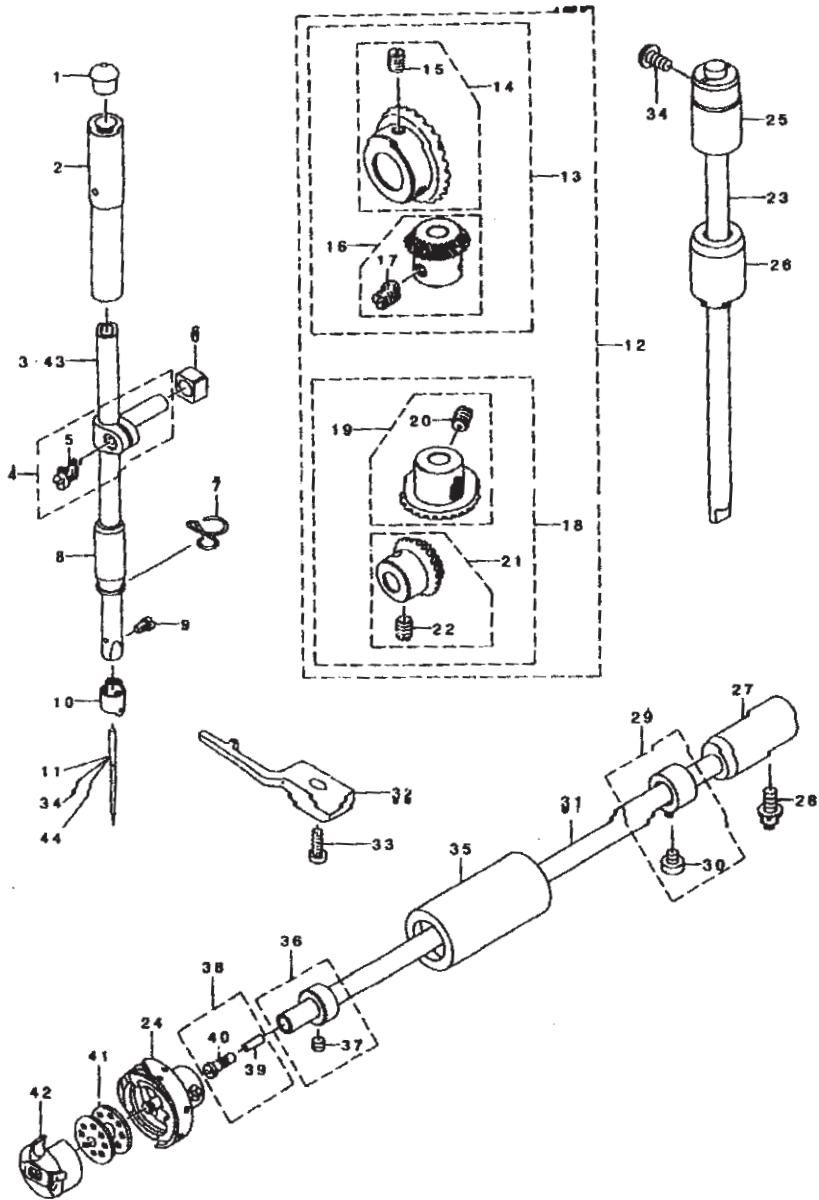


2.

REF. NO	NOTE	PART NO.	DESCRIPTION	Qty
1		SS-8151150-SP	SCREW 15/64-28 L=10.5	1
2		229-19559	THREAD TAKE-UP CRANK SHAFT ASM	1
3		229-19203	RUBBER	1
4		110-39070	THREAD TAKE-UP LEVER ASM.	1
5		110-39062	THREAD TAKE-UP LEVER ASM.	(1)
6	#01	B1905-541-800	NEEDLE BEARING	(2)
7		110-05204	NEEDLE BAR CRANK	(1)
8		B1408-552-000	NEEDLE BAR CRANK ROD	(1)
9		B1903-552-000	LEFT SCREW	(1)
10		229-03157	COUNTER WEIGHT ASM.	1
11		SS-8681850-TP	SCREW 9/32-28 L=16	(1)
12		SS-8660610-TP	SCREW 1/4-40 L=6	(2)
13		RO-0442401-00	RUBBER RING	(1)
14		SS-7681850-TP	SCREW 9/32-28 L=16	(1)
15		229-03108	COUNTER WEIGHT	(1)
16		229-10953	FEED DRIVE ECCENTRIC CAM ASM.	1
17		SS-8661110-SP	SCREW 1/4-40 L=11	(2)
18		229-10004	FEED DRIVE ECCENTRIC CAM	(1)
19		SS-6090650-SP	SCREW 9/64-40 L=6	2
20		229-03405	MAIN SHAFT BUSHING, REAR	1
21		229-03504	OIL SEAL	1
22		RC-1850001-KP	SNAP RING 18.5	1
23		229-04155	THRUST COLLAR ASM.	1
24		SS-8660610-TP	SCREW 1/4-40 L=6	(2)
25		229-03207	MAIN SHAFT FRONT BUSHING	1
26		229-04007	OIL ADJUSTING COLLAR	1
27		229-03306	BUSHING, INTERMEDIATE	1
28		229-03702	ROLLER FELT	1
29		229-27206	HAND WHEEL	1
30		SS-8151550-SP	SCREW 15/64-28 L=15	2
31		229-03009	UPPER SHAFT	1
32		229-03000	OIL AMOUNT ADJUSTING PIN	1
33		RO-0291801-00	RUBBER RING	1
34		229-10103	THRUST COLLAR	1

Note #01....SELECTING PART

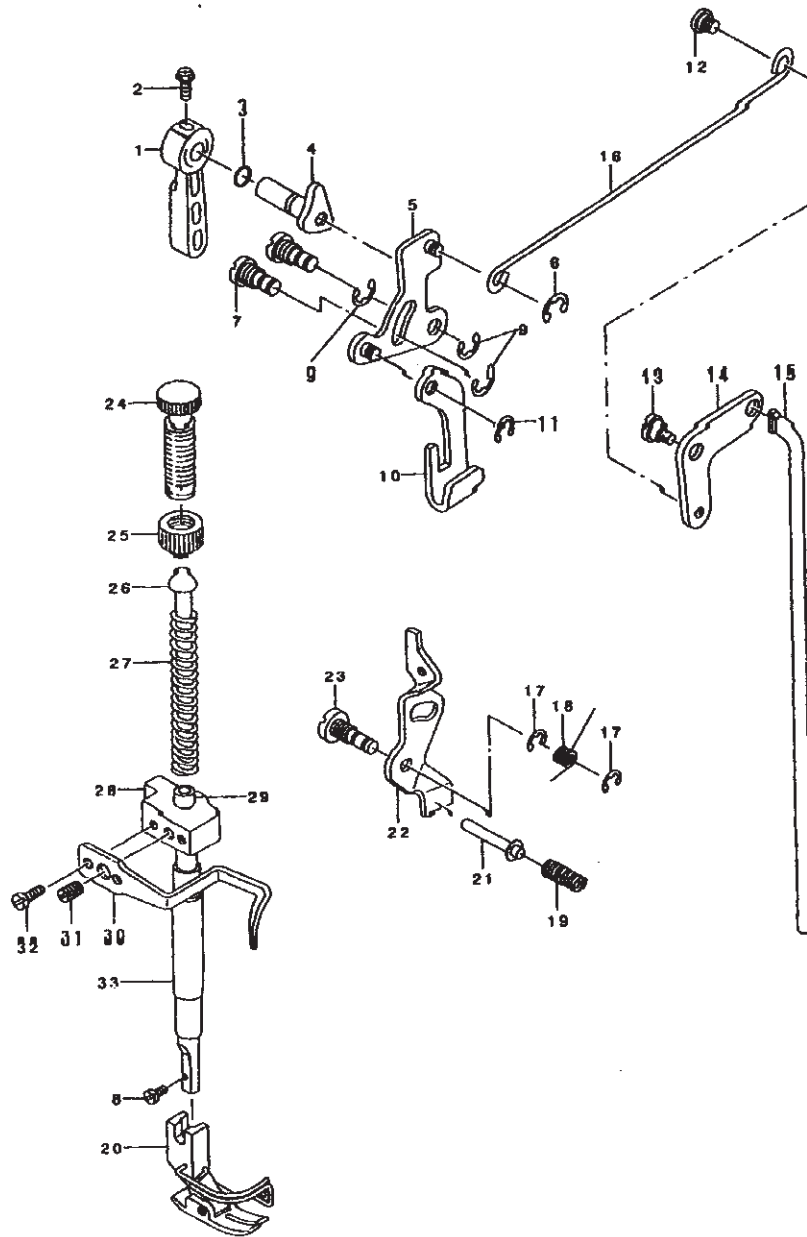
### 3. NEEDLE BAR, UPRIGHT SHAFT & HOOK DRIVING SHAFT COMPONENTS



3.

REF. NO	NOTE	PART NO.	DESCRIPTION	Qty
1		229-01409	CAP	1
2		229-06101	NEEDLE BAR BUSHING ,UPPER	1
3		229-06002	NEEDLE BAR	1
4		229-06457	NEEDLE ROD HOLDER ASM.	1
5		SS-8090670-TP	SCREW 9/64-40 L=6	(1)
6		229-06507	SLIDE BLOCK	1
7		229-20805	NEEDLE BAR THREAD GUIDE	1
8		229-06200	NEEDLE BAR BUSHING, LOWER	1
9		SS-7080510-TP	SCREW 1/8-44 L=4.5	1
10		229-06309	NEEDLE BAR THREAD GUIDE	1
11		MDB-100B1400	NEEDLE DBX1 #14	1
12		B1306-155-0C0	GEAR & PINION ASM.	1
13		B1306-155-0B0	GEAR & PINION ASM., UPPER	(1)
14		B1305-012-0A0	GEAR ASM.	(1)
15		SS-8660810-TP	SCREW 1/4-40 L=8	(2)
16		B1306-155-0A0	PINION ASM.	(1)
17		SS-8660810-TP	SCREW 1/4-40 L=8	(2)
18		B1307-155-0B0	GEAR & PINION ASM., LOWER	(1)
19		B1307-155-0A0	GEAR ASM. LARGE	(1)
20		SS-8660810-TP	SCREW 1/4-40 L=8	(2)
21		B1308-155-0A0	PINION ASM.	(1)
22		SS-8660810-TP	SCREW 1/4-40 L=8	(2)
23		229-05004	UPRIGHT SHAFT	1
24		B1830-127-0A0	HOOK ASM.	1
25		229-05103	UPRIGHT SHAFT BUSHING ,LOWER	1
26		229-05202	UPRIGHT SHAFT BUSHING ,LOWER	1
27		229-16308	BUSHING ,REAR	1
28		SS-4120915-SP	SCREW 3/16-28 L=9	1
29		229-17157	THRUST COLLAR ASM.	1
30		SS-8110420-TP	SCREW 11/64-40 L=4.8	(2)
31		229-16001	LOWER SHAFT	1
32		229-16407	BOBBIN CASE HOLDER	1
33		SS-4110915-SP	SCREW 11/64-40 L=9	1
34		SS-4120915-SP	SCREW 3/16-28 L=9	1
35		229-16100	LOWER SHAFT FRONT METAL	1
36		229-17058	THRUST COLLAR ASM.	1
37		SS-8110410-TP	SCREW 11/64-40 L= 3.5	(2)
38		229-16555	OIL SEAL SCREW ASM.	1
39		229-18605	OIL WICK	(1)
40		229-16506	OIL SEAL SCREW	(1)
41		229-32909	BOBBIN	1
42		B1837-012-0A0	BOBBIN CASE ASM.	1
43		111-41108	NEEDLE BAR	1
44		MC-2005009-00	NEEDLE 134 90	1

# 4. HAND LIFTER COMPONENTS

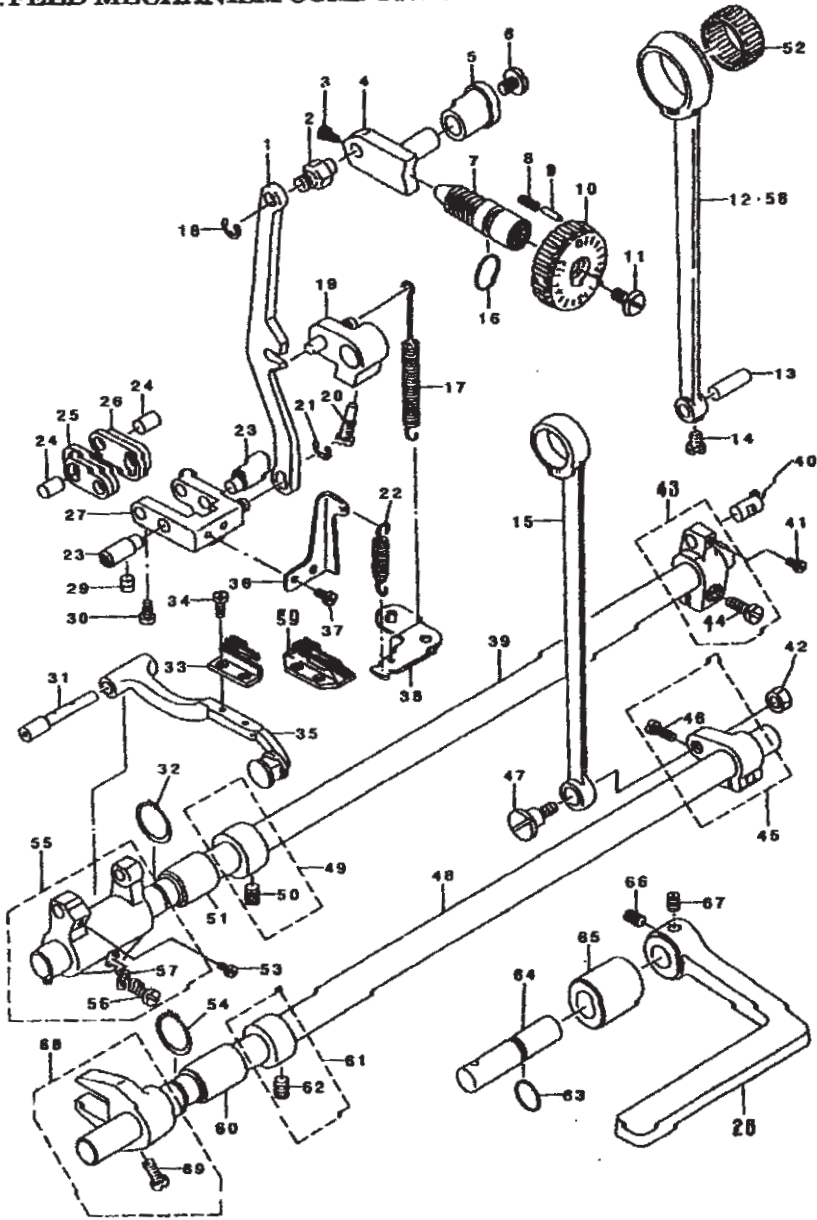




4.

REF. NO	NOTE	PART NO.	DESCRIPTION	Qty
1		229-07802	HAND LIFTER	1
2		B1521-555-000	SCREW	1
3		RO-0371801-00	RUBBER RING	1
4		229-08552	HAND LIFTER CAM ASM.	1
5		229-08156	HAND LIFTER LINK	1
6		RE-0500000-KO	E-RING	1
7		110-06509	LINK SHAFT	1
8		SS-7091110-SP	SCREW 9/64-40 L=10.5	1
9		RE-0500000-KO	E-RING	3
10		229-08008	LIFTING LEVER	1
11		RE-0500000-KO	E-RING	1
12		229-08909	HINGE SCREW	1
13		SD-0720331-SP	HINGE SCREW D= 7.24 H= 3.3	1
14		229-08800	LIFTING LEVER LINK	1
15		229-09006	CONNECTING ROD VERTICAL	1
16		229-08305	LIFTING LEVER CONNECTING ROD	1
17		RE-0500000-KO	E-RING	2
18		229-20201	TENSION RELEASE RETURN SPRING	1
19		229-20409	TENSION RELEASE PIN SPRING	1
20		B1524-012-0BA	PRESSER FOOT ASM.	1
21		110-18306	TENSION RELEASE SUPPORTING PIN	1
22		229-20003	TENSION RELEASE PLATE	1
23		110-18108	TENSION RELEASE SHAFT	1
24		229-07505	PRESSER ADJUSTING SCREW	1
25		229-07604	PRESSER ADJUSTING SCREW NUT	1
26		229-07703	PRESSER GUIDE BAR	1
27		229-07406	PRESSER ADJUSTING SPRING	1
28		229-07208	PRESSER BAR GUIDE BRACKET	1
29		229-07000	PRESSER BAR	1
30		229-07307	PRESSER BAR THREAD GUIDE	1
31		SS-8660810-TP	SCREW 1/4-40 L=8	1
32		SS-6090910-SP	SCREW 9/64-40 L=9	2
33		229-07109	PRESSER BAR BUSHING, LOWER	1

# 5. FEED MECHANISM COMPONENTS

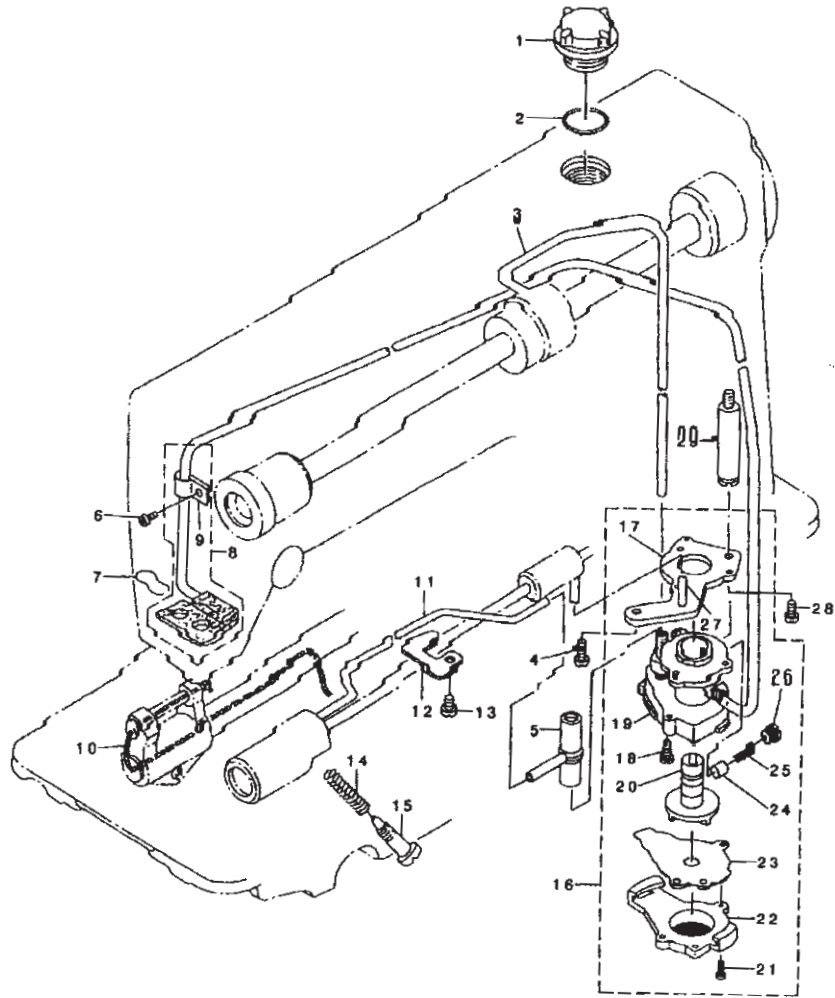


5.

REF. NO	NOTE	PART NO.	DESCRIPTION	Qty
1		229-11408	FEED ADJUST ROD	1
2		229-11507	FEED REGULATOR PIN	1
3		SS-6090670-TP	SCREW 9/64-40 L=6	2
4		229-11606	FEED REGULATOR	1
5		229-11705	FEED REGULATOR BUSHING	1
6		SS-7120770-SH	SCREW 3/16-28 L=7	1
7		229-11804	FEED REGULATOR SCREW	1
8		229-12109	SPRING	1
9		229-12000	PIN	1
10		229-11803	FEED DIAL	1
11		SS-6121860-SP	SCREW 3/16-28 L=18	1
12		229-10202	ROCKER SHAFT CONNECTING ROD	1
13		229-11101	WALKING FOOT PIN C	1
14		SS-6090620-SP	SCREW 9/64-40 L=6	1
15		229-15003	CONNECTING ROD	1
16		RO-0922702-00	RUBBER RING	1
17		229-12406	FEED REVERSE SPRING	1
18		RE-0500000-KO	E-RING	1
19		229-12257	FEED REVERSE ARM ASM.	1
20		110-10410	FEED REVERSE ARM SCREW	1
21		RE-0500000-KO	E-RING	1
22		229-11309	ADJUSTING LINK SPRING	1
23		229-10806	ADJUSTING LINK FULCRUM SHAFT A	2
24		229-10905	WALKING FOOT PIN A	2
25		110-08703	WALKING FOOT LINK	2
26		110-08604	CONNECTING LINK A	2
27		229-10459	FEED ADJUST LINK ASM.	1
28		229-12703	REVERSE FEED CONTROL LEVER	1
29		SS-8150710-SP	SCREW 15/64-28 L=7	2
30		SS-6090620-SP	SCREW 9/64-40 L=6	2
31		229-13206	FEED BAR SHAFT	1
32		RC-0150001-KP	RETAINING RING 13.8	1
33		B1613-012-A00	FEED DOG A	1
34		SS-4080620-TP	SCREW 1/8-44 L=6	2
35		229-13354	FEED BASE ASM.	1
36		229-41306	ADJUSTING LINK SPRING GUIDE	1
37		SS-7110510-SP	SCREW 11/64-40 L=5	2
38		229-13701	FEED SPRING HOOK	1
39		229-12901	FEED ROCKER SHAFT	1
40		229-11002	WALKING FOOT PIN B	1
41		SS-6090620-SP	SCREW 9/64-40 L=6	1
42		NS-6680410-SP	NUT 9/32-28	1
43		229-10350	FEED ROCKER SHAFT CRANK ASM.	1
44		SS-7121410-TP	SCREW 3/16-28 L=14	(1)
45		229-15151	FEED ARM COMPL.	1
46		SS-7121610-SP	SCREW 3/16-28 L=15.5	(1)
47		SD-1000801-SH	HINGE SCREW D=10 H=8	1
48		229-15291	FEED DRIVING SHAFT	1
49		229-04155	THRUST COLLAR ASM.	1
50		SS-8660610-TP	SCREW 1/4-40 L=6	(2)
51		229-13008	FEED ROCKER SHAFT BUSHING	1
52	#02	B1636-581-C00	NEEDLE BEARING	1
53		SS-7110740-TP	SCREW 11/64-40 L=7	1
54		RC-0150001-KP	RETAINING RING 13.8	1
55		229-13156	FEED BAR CRANK ASM.	1
56		SS-7121410-TP	SCREW 3/16-28 L=14	(1)
57		WP-0480856-SP	WASHER 4.8X8.4X0.8	(1)
58	#01	229-13800	HORIZONTAL FEED ROD B	1
59	#03	B1613-012-100	FEED DOG 1	1
60		229-13008	FEED ROCKER SHAFT BUSHING	1
61		229-04155	THRUST COLLAR ASM.	1
62		SS-8660610-TP	SCREW 1/4-40 L=6	(1)
63		RO-0781901-00	RUBBER RING	1
64		229-12604	FEED REVERSE SHAFT	1
65		229-12802	FEED LEVER METAL	1
66		SM-8061050-TP	SCREW	1
67		SH-8061010-TP	SCREW	1
68		229-15300	RIVING SHAFT CRANK	1
69		SS-7111120-SP	SCREW 11/64-40 L=10.5	(1)

Note #01....FOR JE,JA  
#02....FOR JE,JA & SELECTIVE PART(A ~ D)  
#03....FOR JA,JH

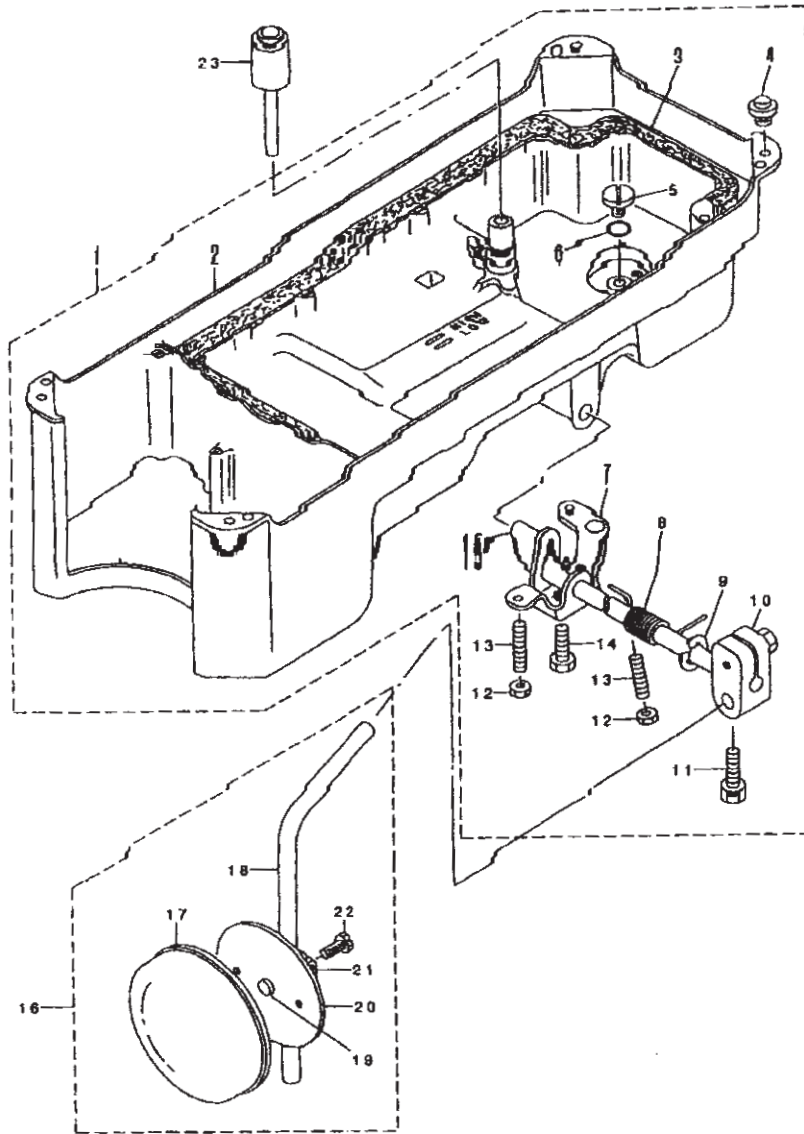
## 6. OIL LUBRICATION COMPONENTS



6.

REF. NO	NOTE	PART NO.	DESCRIPTION	Qty
1		229-24708	OIL SIGHT WINDOW	1
2		RO-1052401-00	RUBBER RING	1
3		229-24401	MAIN SHAFT OIL TUBE	1
4		SS-4150915-SP	SCREW 15/64-28 L=9	1
5		229-24609	MAIN SHAFT OIL TUBE	1
6		SS-4120615-SP	SCREW 3/16-28 L=6	1
7		229-25101	OIL FELT PRESSER	1
8		229-24153	OIL RETURN TUBE ASM.	1
9		229-24302	HOLDER	(1)
10		CO-2520000-00	OIL WICK	0.21
11		229-24500	OIL TUBE	1
12		229-24807	TUBE HOLDER .LOWER	1
13		SS-4150915-SP	SCREW 15/64-28 L=9	1
14		229-24906	SPRING	1
15		229-25002	OIL ADJUSTING SCREW	1
16		229-23056	LUBRICATING OIL PUMP ASM.	1
17		229-23304	OIL PUMP INSTALLING BASE	(1)
18		SL-4030851-SF	SCREW M3 L=8	(3)
19		229-23007	OIL PUMP	(1)
20		229-23700	OIL PUMP IMPELLER	(1)
21		SE-4301041-SR	SCREW D=3 L=10	(3)
22		229-23205	LUBRICATING OIL PUMP COVER	(1)
23		229-23809	OIL PUMP IMPELLER COVER	(1)
24		229-23403	PLUNGER	(1)
25		229-23601	PLUNGER SCREW	(1)
26		229-23502	PLUNGER SCREW	(1)
27		229-23908	HOOK DRIVING SHAFT OIL TUBE	(1)
28		SS-6111010-TP	SCREW 11/64-40 L= 9.5	1
29		229-24005	OIL PUMP SUPPORT	1

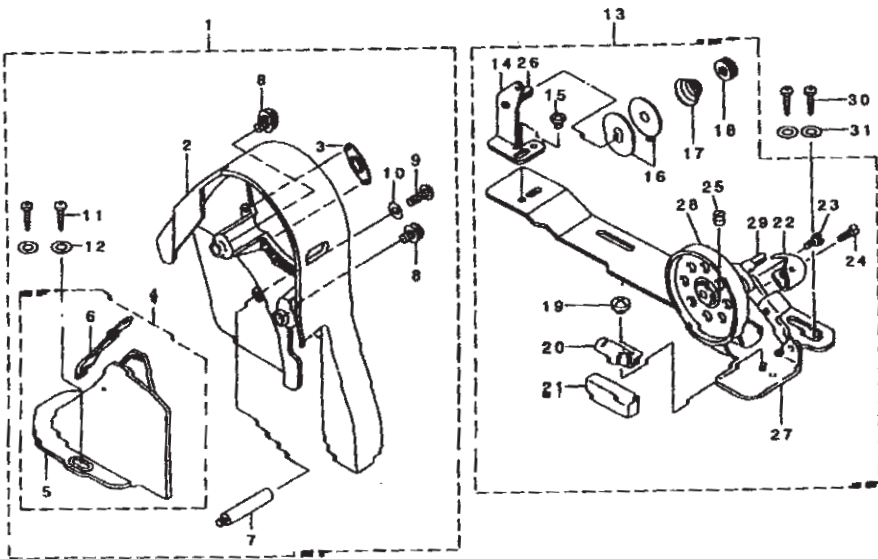
# 7. OIL RESERVOIR COMPONENTS



7.

REF. NO	NOTE	PART NO.	DESCRIPTION	Qty
1		110-47057	OIL RESERVOIR ASM.	1
2		110-23017	OIL RESERVOIR	(1)
3		110-24700	GASKET	(1)
4		110-47107	RUBBER CUSHION	(4)
5		SS-6700710-SH	SCREW 5/16-24 L=7	(1)
6		RO-1082401-00	RUBBER RING	(1)
7		110-24015	CONNECTING ROT. VERTICAL.	(1)
8		110-24106	SPRING	(1)
9		RE-1000000-K0	E-RING 10	(1)
10		110-24510	BRACKET	(1)
11		SM-9062053-SR	SCREW M6 L=20	(2)
12		NH-6060001-SE	NUT M6	(2)
13		SM-8063012-TR	SCREW M6 L=30	(2)
14		SM-9061853-SR	SCREW M6 L=17.5	(1)
15		110-24205	KNEE PRESS ROD	(1)
16		229-34251	KNEE PRESS PLATE ASM.	1
17		229-34509	KNEE PRESS PLATE COVER	(1)
18		229-34608	KNEE PRESS PLATE ROD	(1)
19		229-34400	KNEE PRESS PLATE RUBBER	(1)
20		229-34202	KNEE PRESS PLATE	(1)
21		229-34301	KNEE PRESS PLATE HOLDER	(1)
22		SM-9061203-SE	SCREW M6 L=12	(1)
23		229-31703	KNEE PRESS LIFTER ROD	1

# 8. BELT COVER & BOBBIN WINDER COMPONENTS

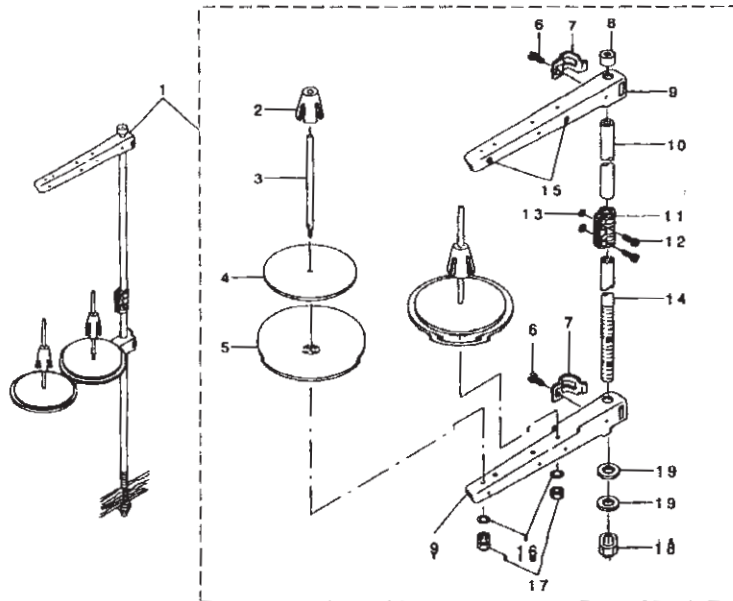




8.

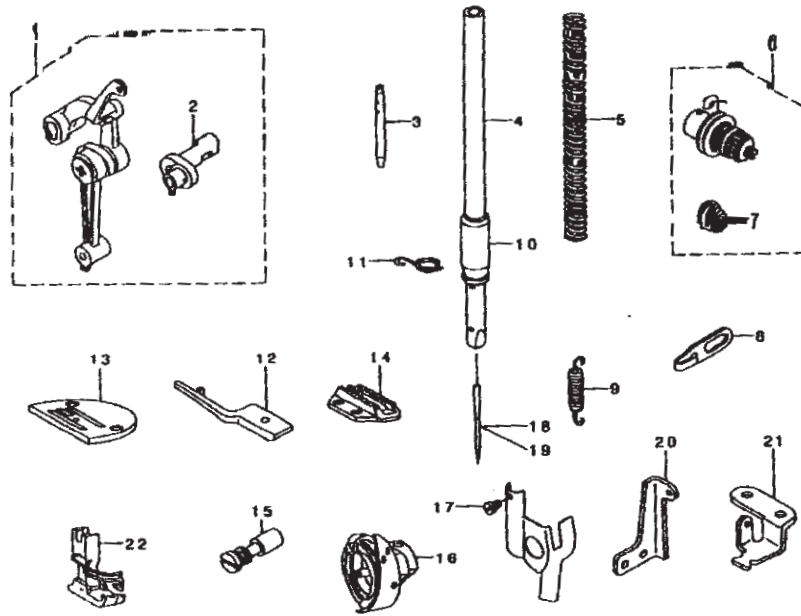
REF. NO	NOTE	PART NO.	DESCRIPTION	QTY
1		229-33451	BELT COVER ASM.	1
2		229-33402	BELT COVER A	(1)
3		229-33501	BELT COVER A CAP	(1)
4		229-33659	BELT COVER B ASM.	(1)
5		229-33600	BELT COVER B	(1)
6		229-33758	BELT COVER B CAP ASM.	(1)
7		229-33907	BELT COVER SUPPORT ,A	(1)
8		229-34004	BELT COVER A SCREW	(2)
9		SS-4121415-SP	SCREW 3/16-28 L=14	(1)
10		WP-0501016-SD	WASHER 5X10.5X1	(1)
11		SK-3412000-SC	WOOD SCREW D=4.1 L=20	(2)
12		WP-0450826-SC	WASHER 4.5X10X0.8	(2)
13		229-27354	BOBBIN WINDER COMPL.	1
14		229-28501	THREAD TENSION BRACKET	(1)
15		SS-4110515-SP	SCREW 11/64-40 L=5	(1)
16		229-28907	THREAD TENSION DISK	(2)
17		229-29004	THREAD TENSION SPRING	(1)
18		229-28808	THREAD TENSION NUT	(1)
19		SS-7110350-SP	SCREW 11/64-40 L=3.5	(1)
20		229-28402	RUBBER BRAKE PRESSER PLATE	(1)
21		229-28303	RUBBER BRAKE	(1)
22		229-28105	POSITIONING FINGER	(1)
23		SD-0490261-SP	HINGE SCREW D=4.9 H=2.6	(1)
24		SS-7081310-SP	SCREW 1/8-44 L=12.5	(1)
25		SS-8110510-SP	SCREW 11/64-40 L=5	(1)
26		229-28709	THREAD TENSION BRACKET	(1)
27		229-27305	BOBBIN BASE	(1)
28		229-27404	BOBBIN PULLEY	(1)
29		229-27602	BOBBIN WINDER POST	(1)
30		SK-3412000-SC	WOOD SCREW D=4.1 L=20	2
31		WP-0450826-SC	WASHER 4.5X10X0.8	2

## 9. THREAD STAND COMPONENTS



REF. NO	NOTE	PART NO.	DESCRIPTION	Qty
1		229-30358	THREAD STAND ASM.	1
2		229-31109	SPOOL RETAINER	(2)
3		229-31000	SPOOL PIN	(2)
4		<del>229-30503</del>	SPOOL REST CUSHION	(2)
5		229-30804	SPOOL REST	(2)
6		SM-6061610-SC	SCREW M6 L=16	(2)
7		229-30705	THREAD GUIDE ARM JOINT	(2)
8		229-31406	SPOOL REST ROD RUBBER CAP	(1)
9		229-30507	SPOOL REST ARM	(2)
10		229-30408	SPOOL REST ROD, UPPER	(1)
11		229-31307	SPOOL REST ROD JOINT	(1)
12		SM-4051405-SE	SCREW M5 L=14	(2)
13		NM-6050001-SE	NUT M5	(2)
14		229-30309	SPOOL REST ROD, LOWER	(1)
15		229-31208	THREAD GUIDE	(2)
16		WS-0510002-KN	SPRING WASHER	(2)
17		NM-6050001-SE	NUT M5	(2)
18		NM-6160511-SE	NUT M16X1.5	(1)
19		WP-1702600-S0	WASHER 17X30X2.6	(2)

## 10. EXCLUSIVE PARTS FOR DDL-8500H



REF. NO	NOTE	PART NO.	DESCRIPTION	Qty
1		110-91659	LINK THREAD TAKE-UP LEVER ASM.	1
2		110-91600	NEEDLE BAR CRANK H	(1)
3		B1114-012-000	THREAD GUIDE PIN	1
4		110-91303	NEEDLE BAR	1
5		B1505-552-000-A	PRESSER SPRING	1
6		110-73558	THREAD TENSION ASM.	1
7		B3114-232-000	THREAD TENSION SPRING	(1)
8		110-91006	ARM THREAD GUIDE (HA)	1
9		110-91204	ADJUST LINK SPRING	1
10		B1403-553-000	NEEDLE BAR BUSHING, LOWER	1
11		B1419-553-000	NEEDLE BAR THREAD GUIDE	1
12		110-91709	POSITIONING FINGER	1
13		B1109-555-HOB	THROAT PLATE (H)	1
14		B1813-555-H00	FEED DOG (H)	1
15		B1213-552-000-A	OIL ADJUSTING PIN	1
16		110-92459	LUBRICATING BOBBIN ASM.	1
17		SS-6080320-SP	SCREW 1/8-44 L= 2.5	1
18	#01	MC-2005013-00	NEEDLE 134 NM130	1
19		MDB-100B2100	NEEDLE DBX1 #21	1
20		110-92361	ADJUSTING LINK SPRING GUIDE	1
21		110-91907	FEED SPRING HOOK	1
22		B1511-543-BBA	HINGED PRESSER FOOT ASM.	1

Note #01....FOR JE