

# ARTISAN®



## NP-4

**Operators Manual  
and  
Spare Parts Booklet**

## General Description and Instructions

### Applications:

The **ARTISAN®** NP4-H NS is specially designed for skiving and beveling leather and rubberized material. It is used for shaping sloped edges and skiving of various parts for leather goods, such as shoes, gloves, bags, wallets, belts, chaps, holsters, sheaths, harnesses, saddles, horn wraps and most all tack.

### Features:

1. Quality design, compact size, easy operation, simple to adjust with smooth operation.
2. Low noise level is achieved by use of precision bearings and manufacturing standards of the highest quality.
3. The machine has a built-in knife sharpener and is engaged with a clutch lever.
4. Proper grindstone pressure is assured through use of an automatic belt tension device.
5. Easy cleaning and replacement of interchangeable spare parts.

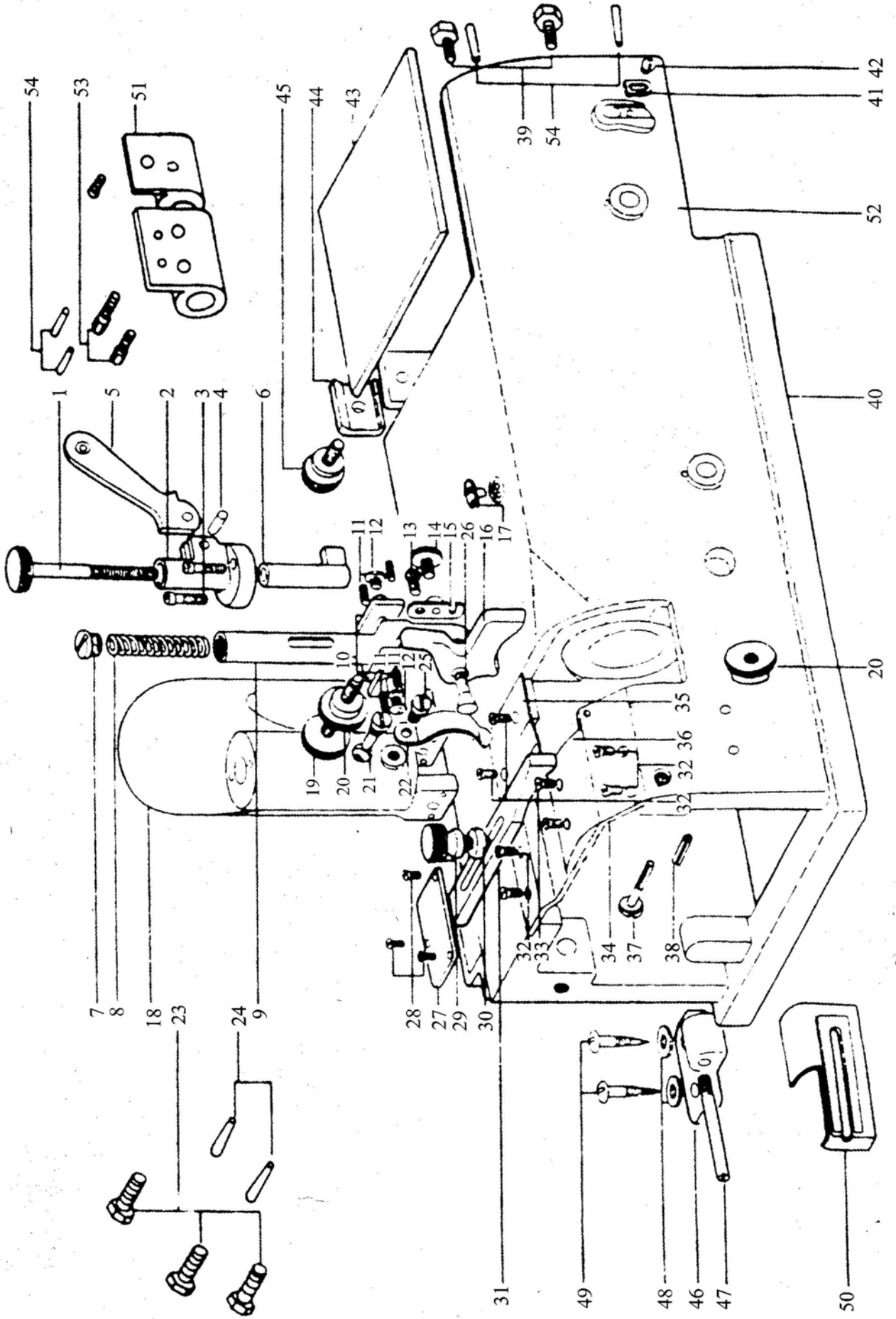
### Adjustment Procedure:

1. For flat skiving, use presser foot "A", for sloped skiving, use presser foot "B", and for U-shaped skiving, use presser foot "C". (See diagram 4.) To adjust the desired skiving depth, turn the knob (part #1 on diagram 1) which adjusts the height of the presser foot (#16). Various skiving widths are obtained by adjusting the guide (#31). The eccentric screw (#26) makes different angles of skiving possible. To change the angle, loosen the knob (#14), turn the screw to the desired angle, and then tighten the knob.
2. When it is necessary to change the feeding speed, change the position of the V-belt between the pulleys. (See diagram 2, part #36 and diagram 3, part #16.)
3. The clearance between the feed wheel and the bell knife is adjusted by turning one or both of the feed roller positioning knobs. (See parts #64 and #67 on diagram 3). The left knob (#64) moves the roller up or down and the front knob (#67) will change the angle of the feed roller. Be sure the feed roller does not contact the bell knife.
4. To sharpen the bell knife, flip the clutch lever (part #50 on diagram 2) into its vertical position to engage the sharpening stone drive belt and then slowly turn the left front knob (#36) to begin sharpening the bell knife.
5. After sharpening, you may find the bell knife's edge too far to the right. When this happens, move the bell knife to the left by temporarily attaching the handle (part #29 on diagram 2), which is found with the accessories, to the right front knob (#28) and turning it counter-clockwise.
6. You may change the position of the cleaning device by using the interior cover tool (item #4 on diagram 4), which is included as an accessory.

### Maintenance:

1. Before operation, make sure the machine in good condition.
2. Periodically oil and grease all moving parts.
3. Sharpen the knife when it becomes dull.
4. If you hear the machine making abnormal noise(s), stop and check it immediately. If necessary, have it repaired by a qualified technician.
5. Keep the machine clean.

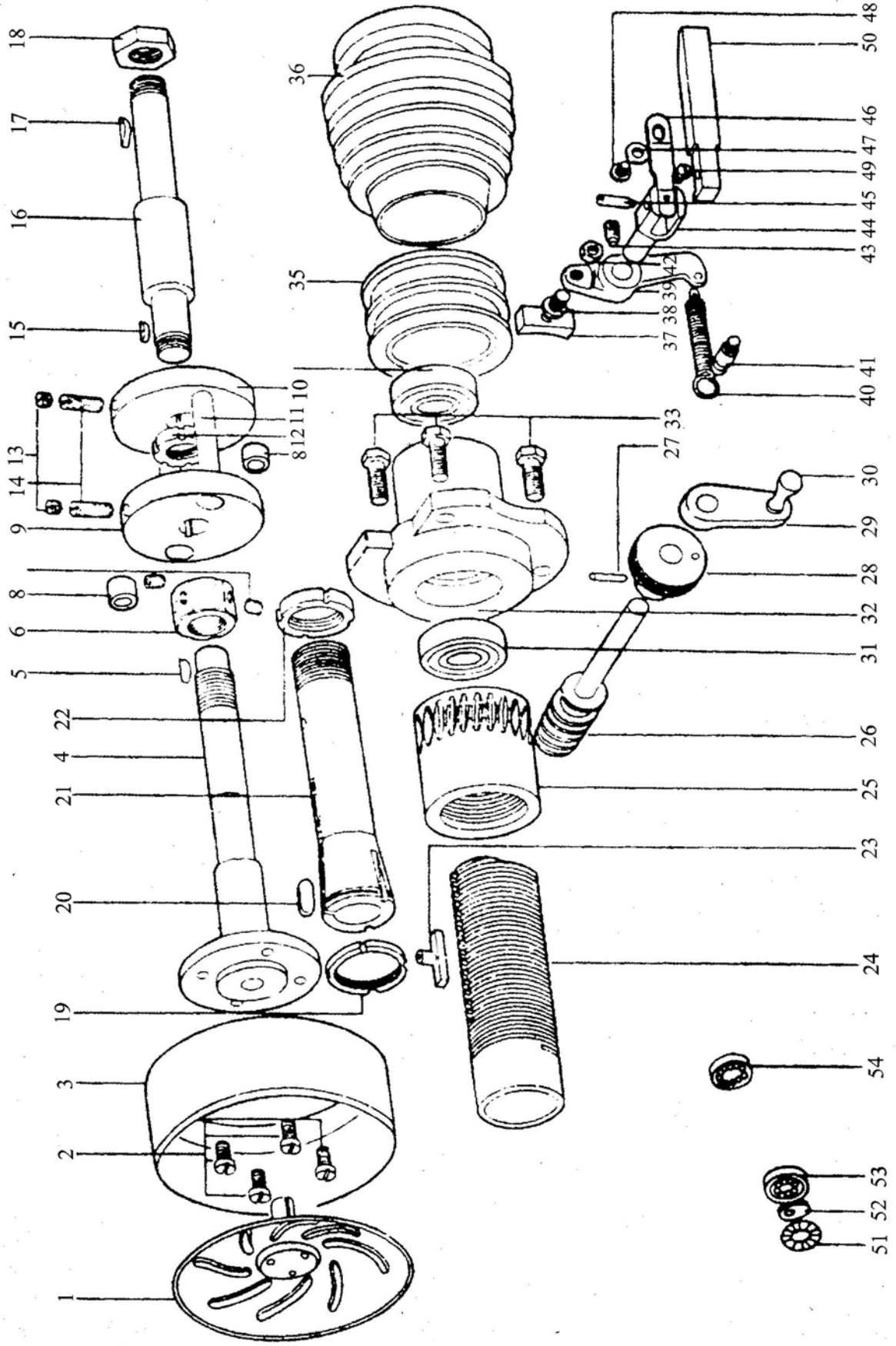
# 1. PRESSER FOOT AND OUTER ATTACHMENTS



Item	Part No.	Description	Quan	Romar
1.1	1157	Presser bar adjusting screw	1	
1.2	1156	Presser bar lifter bracket	2	9223
1.3	3/16" x 28 x 15 <sup>p</sup>	Presser bar lifter bracket screw	2	9223
1.4	5 x 16 <sup>p</sup>	Presser bar lifter pin	1	
1.5	1153	Presser bar lifter	1	
1.6	1155	Presser bar lifter lever	1	
1.7	1150	Presser bar cover screw	1	
1.8	1151	Presser bar spring	1	
1.9	1145	Presser bar	1	
1.10	1148	Presser foot side plates	2	
1.11	9 x 64" x 10 <sup>p</sup>	Presser foot side plates adjusting screws	4	
1.12	3/16" x 28 x 6 <sup>p</sup>	Presser foot side plates screws	1	
1.13	3/16" x 28 x 10 <sup>p</sup>	Presser foot shaft hook metal hinge screw	1	
1.14	1144	presser foot shaft hook metal set screw	1	
1.15	1142	presser foot shaft hook metal	1	
1.16	1140	Presser foot 50mm	1	
1.17	1007	Oil cup	1	
1.18	1001	Arm	1	
1.19	1085	Presser foot adjusting screw	1	3.67
1.20	1086	Presser foot adjustable screw nuts	2	3.68
1.21	1152	Presser bar spring pin	1	
1.22	1140 SP	Presser foot spring	1	
1.23	3/8" x 16 x 25 <sup>p</sup>	Inner hexagonal screw	1	
1.24	Φ6 x 25 <sup>p</sup>	Taper pin	1	
1.25	3/16" x 32 x 10 <sup>p</sup>	Presser foot spring screw	1	
1.26	1141	Presser foot shaft	1	
1.27	1122	Worm shamber plate	1	
1.28	9/64" x 40 x 7.5 <sup>p</sup>	Screws	1	
1.29	1009	Ruler set screw	1	
1.30	1008	Ruler set screw washer	1	
1.31	1006	Ruler	1	
1.32	11/64" x 40 x 9 <sup>p</sup>	Slide plate screws	6	
1.33	11/64" x 40 x 7 <sup>p</sup>	Slide plate screws	2	
1.34	1003	Slide plate A	1	
1.35	1004	Slide plate B	1	
1.36	1005	Slide plate C	1	
1.37	15/64" x 28 <sup>p</sup>	Waster feeder screw	1	
1.38	6 x 25.4 <sup>p</sup>	Waster feeder stop pin	1	
1.39	5/16" x 24 x 21 <sup>p</sup>	Hexagon slotted screw (Base plate)	2	
1.40	1002	Bed	1	233
1.41	1036	Belt cover plate	1	
1.42	9/64" x 40 x 6	Belt cover plate screw	1	
1.43	1037	Belt cover lid	1	
1.44	1038	Belt cover lid stopper	1	
1.45	1009	Ruler set screw	1	1.29
1.46	2001	Hinges	2	
1.47	2002	Hinge pins	2	
1.48	18 x 6.3 x 1.6	Hinge set screw washers	4	
1.49	6 x 30	Hinge set screws	4	
1.50	1105	Waste feeder metals(SET)	1	

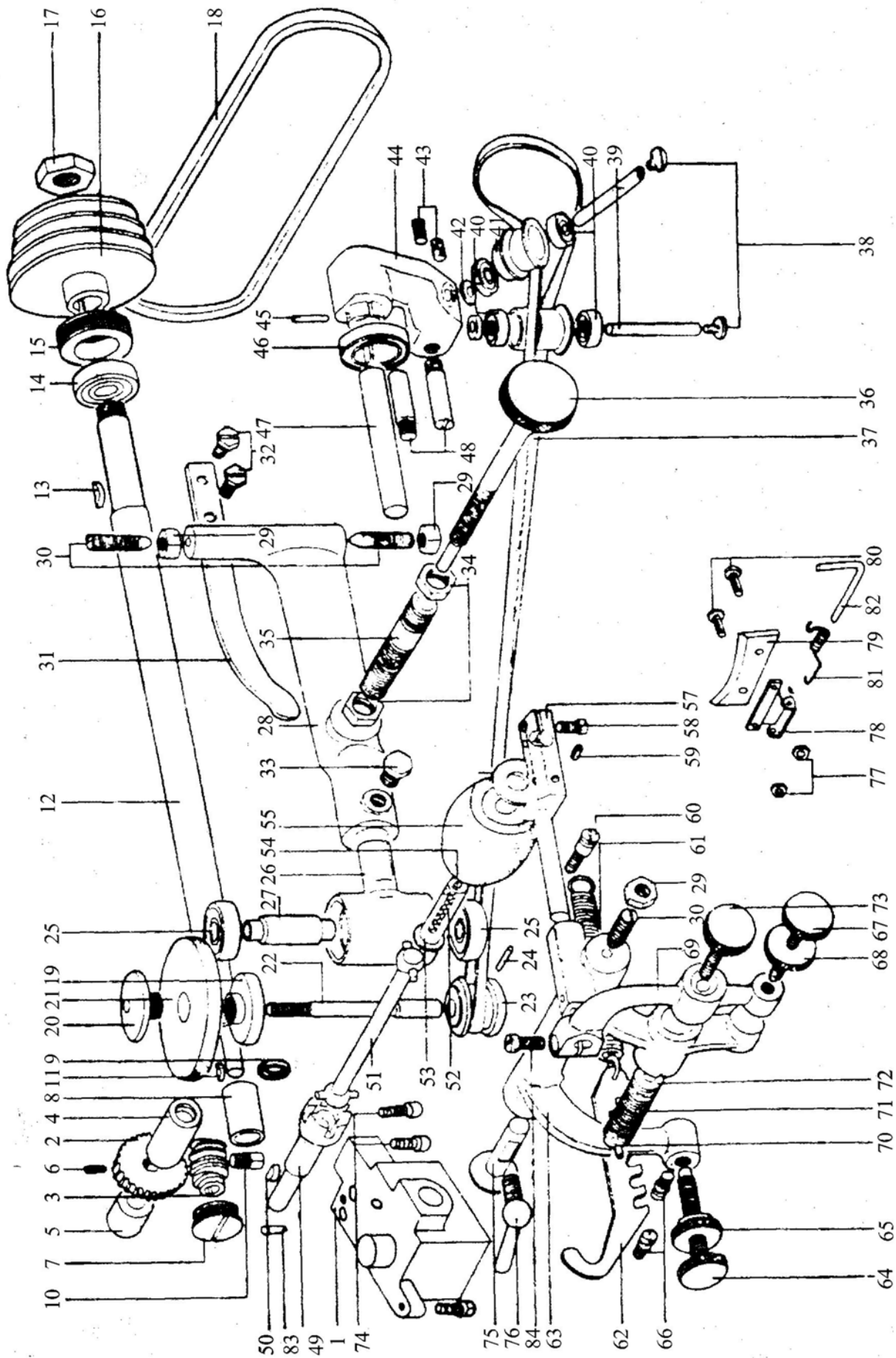
Item	Part No.	Description	Quan	Romar
1.51	2003	Fransmission shelf	1	
1.52	2004	Base plate	1	3.47
1.53	1/4" x 20 x 20 <sup>p</sup>	Set screw (Transmiasion shalt)	2	
1.54	Φ4 x 22 <sup>p</sup>	Tape pin	4	3.83

## 2. KNIFE AND RELATED PARTS



Item	Part No.	Description	Quan	Romar
2.1	1021	leather peeled cover	1	
2.2	M6 p1.0 × 10 <sup>p</sup>	Knife set screws	4	
2.3	1010	Knife	1	
2.4	1011	Knife shaft	1	
2.5	3 × 13	Knife shaft key	1	
2.6	Φ28 × M16 × 7 × P1.5	Knife shaft nuts	2	
2.8	1023	Rubber bushings	2	
2.9	1015	Puller shaft flange holder	1	
2.10	1033	Pulley shaft flange	1	
2.11	1034	Flange shafts	2	
2.12	Φ28 × M18 × 7 × P1.5	Pulley shaft flange nut	1	
2.13	9/32" × 28 × 4.5	Pulley shaft flange screws(B)	2	
2.14	9/32" × 28 × 18	Pulley shaft flange screws(A)	2	
2.15	3 × 10	Pulley shaft key(small)	1	
2.16	1031	Pulley shaft	1	
2.17	3 × 16	Pulley shaft key	1	
2.18	M16p × P1.5	Hexagonal nut(A)	1	
2.23	1020	Knife shaft lead pipe key	1	
2.24	1013	knife shaft lead pipe	1	
2.25	1014	Knife shaft worm wheel	1	
2.26	1016	Knife shaft worm	1	
2.27	3 × 18 <sup>p</sup>	Taper pin	1	
2.28	1017	Knife adjusting knob	1	
2.29	1018	Knife adjusting handle	1	
2.30	1020	Knife adjusting handle Knob	1	
2.31	6203Z	pulley shaft bearings	1	
2.32	6023Z	Pulley shaft metal	1	
2.33	5/16" × 24 × 21 <sup>p</sup>	pulley shaft metal screws	3	1.39
2.34		Pulley shaft bearing	1	
2.35	1035	Clutch	1	
2.36	1030	Pulley	1	
2.37	1049	Clutch slide block	1	
2.38	1040	Clutch slide block screw	1	
2.39	1043	Clutch arm	1	
2.40	1024	Clutch spring	1	
2.41	1046	Clutch spring hook	1	
2.42	1/4" × 40	Clutch slide block screw nut	1	
2.43	15/64" × 28 × 8 <sup>p</sup>	Clutch lever screw	1	
2.44	1041	Clutch lever shaft	1	
2.45	1160	Clutch arm screw	1	
2.46	1042	Clutch lever spring	1	
2.47		Clutch lever spring washer	1	
2.48	9/64" × 40 × 6 <sup>p</sup>	Clutch lever spring hinge screw	1	
2.49	9/64" × 40 × 6 <sup>p</sup>	Clutch lever spring screw	1	
2.50	1039	Clutch lever	1	
2.51	NTB2035	Trust bearing	1	
2.52	20 × 35 × 1	Flat gasket	1	
2.53	6004 ZZ	Bearing	1	
2.54	6023 ZZ	Bearing	1	2.31

### 3. GRINDSTONE AND ROLLER RELATED PARTS

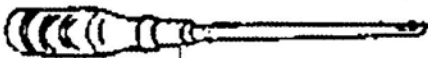
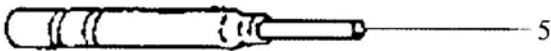
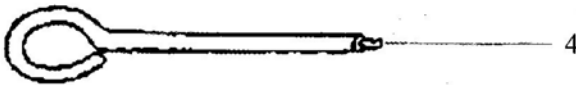


Item	Part No.	Description	Quan	Romar
3.1		Worm wheel box	1	
3.2	1116	Main shaft worm gear Wheel	1	
3.3	1115	Main shaft worm gear	1	
3.4	1119	Roller driving shaft Metal	1	
3.5	1120	Roller driving shaft metal(2)	1	
3.6	9/64" × 40 × 90 <sup>ø</sup>	Main shaft worm gear Wheel screw	1	
3.7	1123	Main shaft worm gear Chamber cover screw	1	
3.8		Main shaft front bushing	1	
3.9	121803	Main shaft worm gear chamber oil seal	1	
3.10	1124	Main shaft worm gear Chamber screw	1	
3.11	2.5 × 10	main shaft key(1)	1	
3.12	1110	main shaft	1	
3.13	3 × 16	Main shaft key(2)	1	
3.14	6002 ZZ	main shaft bearing	1	
3.15	M63 × 10 × P1.5	Main shaft bearing holder screw	1	
3.16	1111	Main shaft pulley	1	
3.17	M14 × P1.5	Hexagonal nut B	1	
3.18	3 starK20	Main shaft belt	1	
3.19	1051	Grindstone set screw	1	
3.20	1052	Grindstone set screw nut	1	
3.21	1050	Grindstone	1	
3.22	1053	Grindstone shaft	1	
3.23		Grindstone shaft pulley	1	
3.24	2.5 × 20	Grindstone shaft pulley taper pin	1	
3.25	6200 Z	Grindstone shaft bearing	1	
3.26	1056	Grindstone shaft bracket	1	
3.27	1055	Grindstone shaft bearing roller	2	
3.28	1057	Grindstone shaft bracket arm	1	
3.29	5/16" × 24	Grindstone shaft bracket arm center screw nuts	1	
3.30	1731	Grindstone shaft bracket arm center screws	3	
3.31	1069	Grindstone shaft bracket arm spring	1	
3.32	15/64" × 24 × 14 <sup>ø</sup>	Grindstone shaft bracket arm spring screws	2	
3.33	5/16" × 24 × 14 <sup>ø</sup>	Grindstone shaft bracket screw		
3.34	1/2" × 28	Grindstone adjusting screw pipe nuts	1	
3.35	1066	Grindstone adjusting screw pipe	2	
3.36	1058	Grindstone adjusting screw	1	
3.37	1059	Grindstone shaft belt	1	
3.38		Belt guide pulley screws	1	
3.39	1063	Belt guide pulley shaft	2	
3.40	626 Z	Belt guide pulley bearings	4	
3.41	1062	Belt guide pulley	2	
3.42	1064	Belt guide pulley washers	2	

Item	Part No.	Description	Quan	Romar
3.43	15/64" × 28 × 8 <sup>ø</sup>	Belt guide pulley shaft screws	2	
3.44	1060	Belt guide bracket	1	
3.45	3 × 18	Belt guide bracket taper pin	1	2.27
3.46	1067	Belt guide bracket spring	1	
3.47	1061	Belt guide bracket shaft	1	
3.48	1065	Belt guide bracket turing stoppers	2	
3.49	1118	Roller driving shaft	1	
3.50	3 × 13	Roller driving shaft key	1	
3.51	1121	Roller driving shaft joint	1	
3.52	1094	Roller shaft oil wick	1	
3.53	1081	Roller shaft	1	
3.54		Roller shaft oil seal plug	1	
3.55	1080	Roller	1	
3.56	1082	Roller washer	1	
3.57	1083	Roller bracket	1	
3.58	15/64" × 28 × 10 <sup>ø</sup>	Roller shaft screw	1	
3.59	11/64" × 40 × 3.5 <sup>ø</sup>	screw	1	
3.60	1098	Waste cleal metal shaft screw spring hooks(2)	1	
3.61	1095	Roller bracket arm spring	1	
3.62	1096	Roller bracket arm spring hook metal	1	
3.63	1091	Roller bracket arm	1	
3.64	1092	Roller bracket arm adjusting screw	1	
3.65	1093	Roller braket arm adjusting screw nut	1	
3.66	1097	Roller bracket arm sapping hooks(1)	2	
3.67	1085	Roller bracket turning arm adjusting screw	1	
3.68	1086	Roller bracket turning arm adjusting screw nut	1	
3.69	1084	Roller bracket turning arm	1	
3.70	1088	Roller bracket turning arm spring stopper	1	
3.71	1087	Roller bracket turning arm spring	1	
3.72	1090	Roller bracket turning arm spring nut	1	
3.73	1089	Roller bracket turning arm spring adjusting screw	1	
3.74	1/4 × "20 × 20 <sup>ø</sup>	Set screw	3	1.53
3.75	1099	Roller bracket arm center pin	1	
3.76	1100	Roller bracket arm center pin screw	1	
3.77	9/64" × 10	Waste clear metal leather nuts	2	
3.78	1104	Waste clear metal	1	
3.79	1104	Waste clear metal leather	1	
3.80	9/64" × 10	Waste clear metal leather screws	2	
3.81	1103	Waste clear metal spring	1	
3.82	1102	Waste clear metal shaft	1	1.54
3.83	Φ4 × 22 <sup>ø</sup>	Taper pin	1	
3.84		Roller shaft screws		



# 4. ACCESSORIES



A 40m/m  
B 30m/m  
C 25m/m

Item	Part No.	Description	Quan
4.1	3001	Grindstone dresser	1
4.2	3002	Grindstone nut spanner	1
4.3	3004	Knife shaft spanner	1
4.4	3005	Knife inter cover remover	1
4.5	3006	Bar type guindstone	1
4.6	3007	Screw driver large	1
4.7	3008	Oiler	
4.16A	1140A	Presser foot 50 mm	1
4.16B	1140B	Presser foot 30 mm	1
4.16C	1140C	Presser foot 25 mm	1
Accessones			
1.47	2002	Hinge pins	2
1.46	2001	Hinges	2
1.48	15 x 6.3 x 1.	Hinge set screw washers	2
1.49	6 x 30	Hinge set screw	4
2.29	1018	Knife adjusting handle	1
2.30	1019	Adjusting handle	1
4.5	3006	Bar type grindstone	1