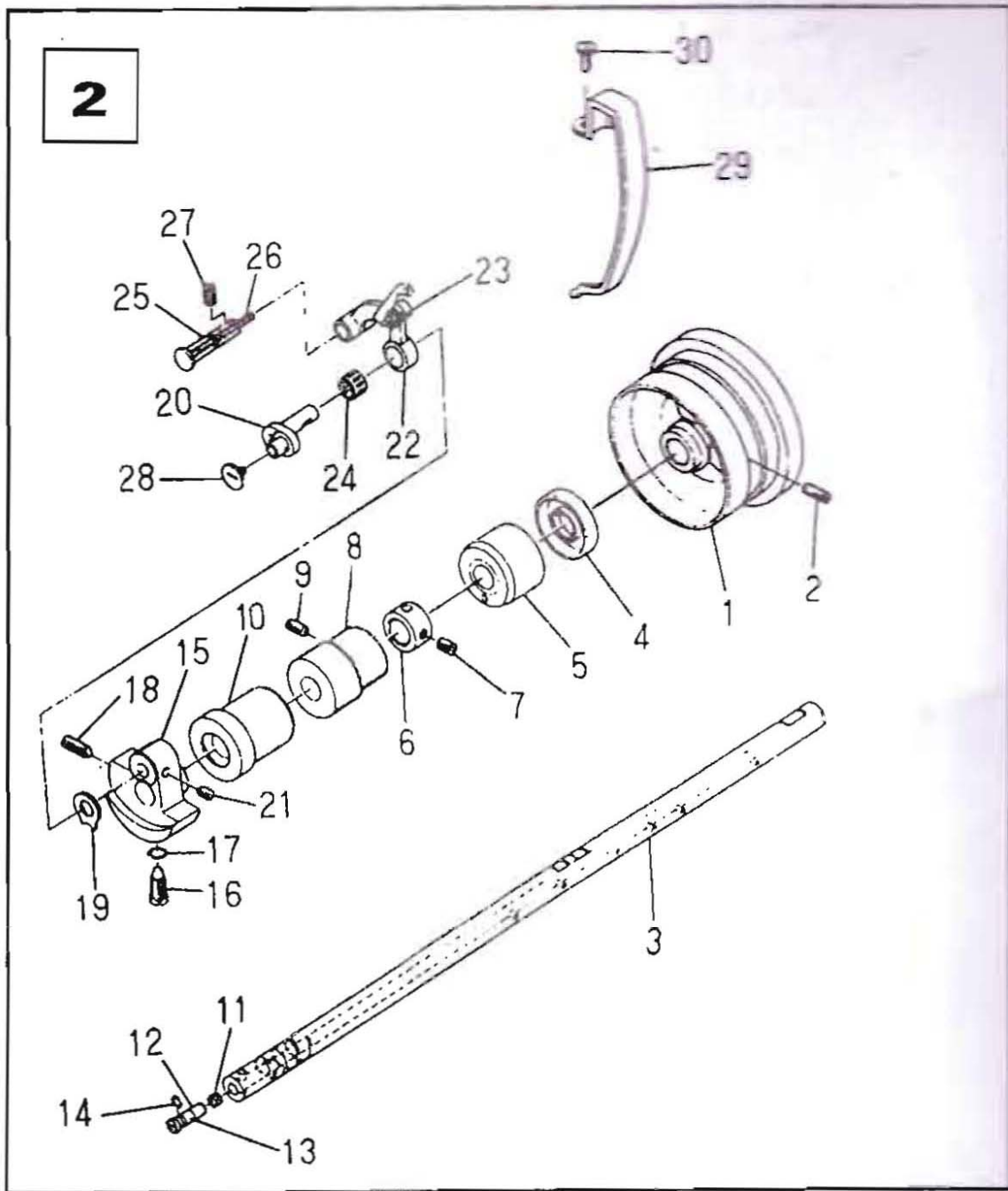


1. Arm Bed
Components

Ref. No	Part No.	Description	Amount
	1	H110-01-001 Model Plate	1
	2	H110-01-002 Model Plate Rivet	2
	3	H110-01-003 Bed Screw Stud	4
	4	H110-01-004 Side Plate	1
	5	H110-01-005 Gasket	1
	6	H110-01-006 Screw 12/64-28 L=9	8

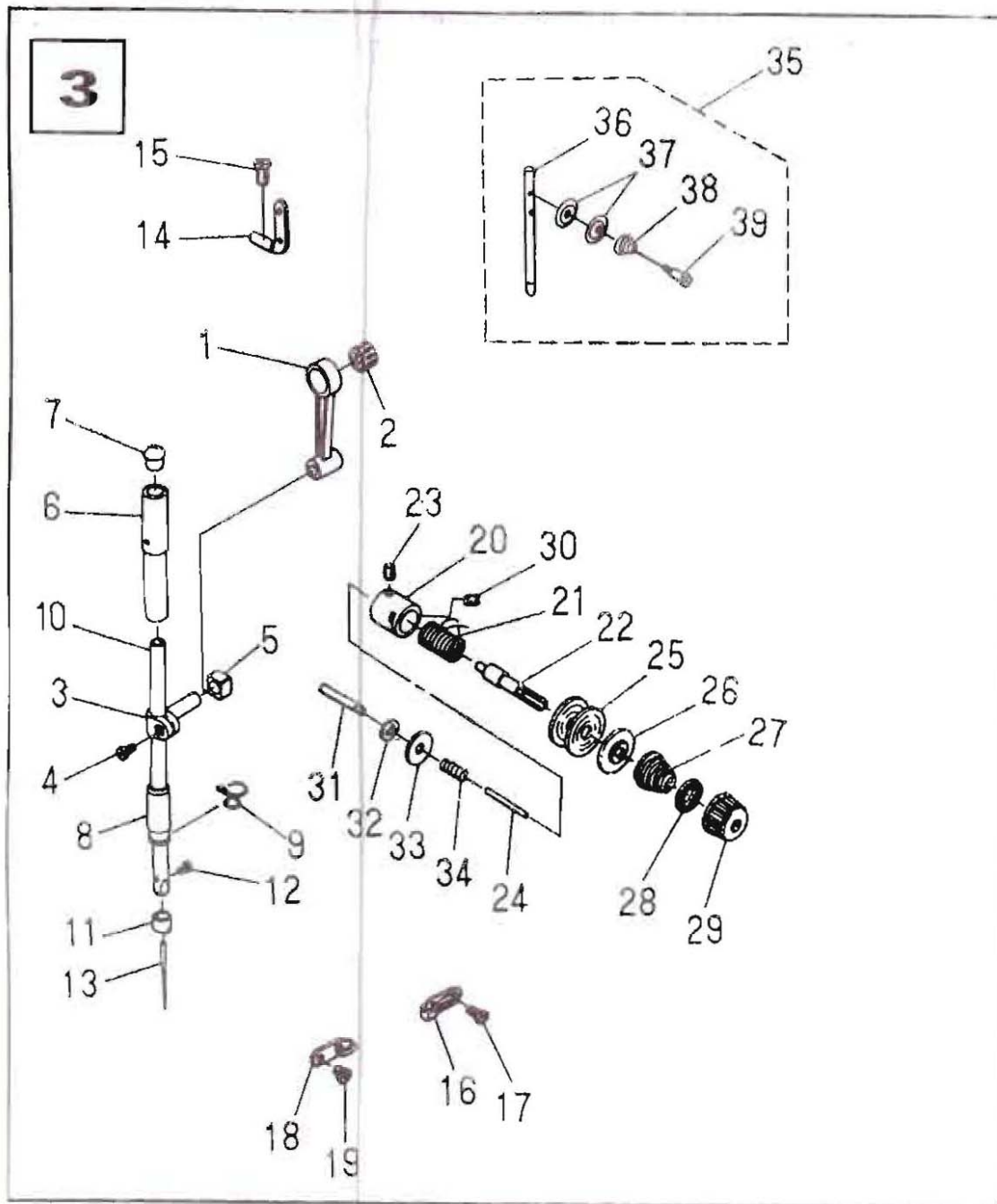
7	H110-01-007	Face Plate Arm	1
8	H110-01-008	Decorative Plate	1
9	H110-01-009	Gasket	1
10	H110-01-010	Screw	3
11	H110-01-011	Rubber Plug	2
12	H110-01-012	Rubber Plug	1
13	H110-01-013	Rubber Plug	2
14	H110-01-014	Rubber Plug	1
15	H110-01-015	Rubber Plug	1



2. Main shaft & Thread take up components

Ref.

No	Part No.	Description	Amount
1	H110-02-001	Hand Wheel	1
2	H110-02-002	Screw 15/64-28 L=15	2
3	H110-02-003	Main Shaft	1
4	H110-02-004	Oil Seal	1
5	H110-02-005	Main Shaft Bushing, Rear	1
6	H110-02-006	Thrust Collar Asm.	1
7	H110-02-007	Screw 1/4-40 L=6	2
8	H110-02-008	Bushing Intermediate	1
9	H110-02-009	Screw	1
10	H110-02-010	Main Shaft Bushing, Front	1
11	H110-02-011	Roller Felt	1
12	H110-02-012	Oil Amount Adjusting pin asm.	1
13	H110-02-013	Rubber Bushin	1
14	H110-02-014	Rubber Ring	1
15	H110-02-015	Counterweight	1
16	H110-02-016	Screw 1/4-40 L=6	1
17	H110-02-017	Rubber Ring	1
18	H110-02-018	Screw 9/92-28 L=16	1
19	H110-02-019	Counterweight Protecting Plate	1
20	H110-02-020	Needle Bar Crank asm.	1
21	H110-02-021	Screw 1/4-40 L=6	2
22	H110-02-022	Thread take-up lever Asm.	1
23	H110-02-023	Rubber	1
24	H110-02-024	Needle Bearing	1
25	H110-02-025	Thread Take-up Crank shaft	1
26	H110-02-026	Oiling Wick	1
27	H110-02-027	Screw 15/64-28 :=10.5	1
28	H110-02-028	Screw left twist 9/64-40 L=4	1
29	H110-02-029	Thread Take-up Lever Cover	1
30	H110-02-030	Screw 3/16-28 L=6	1

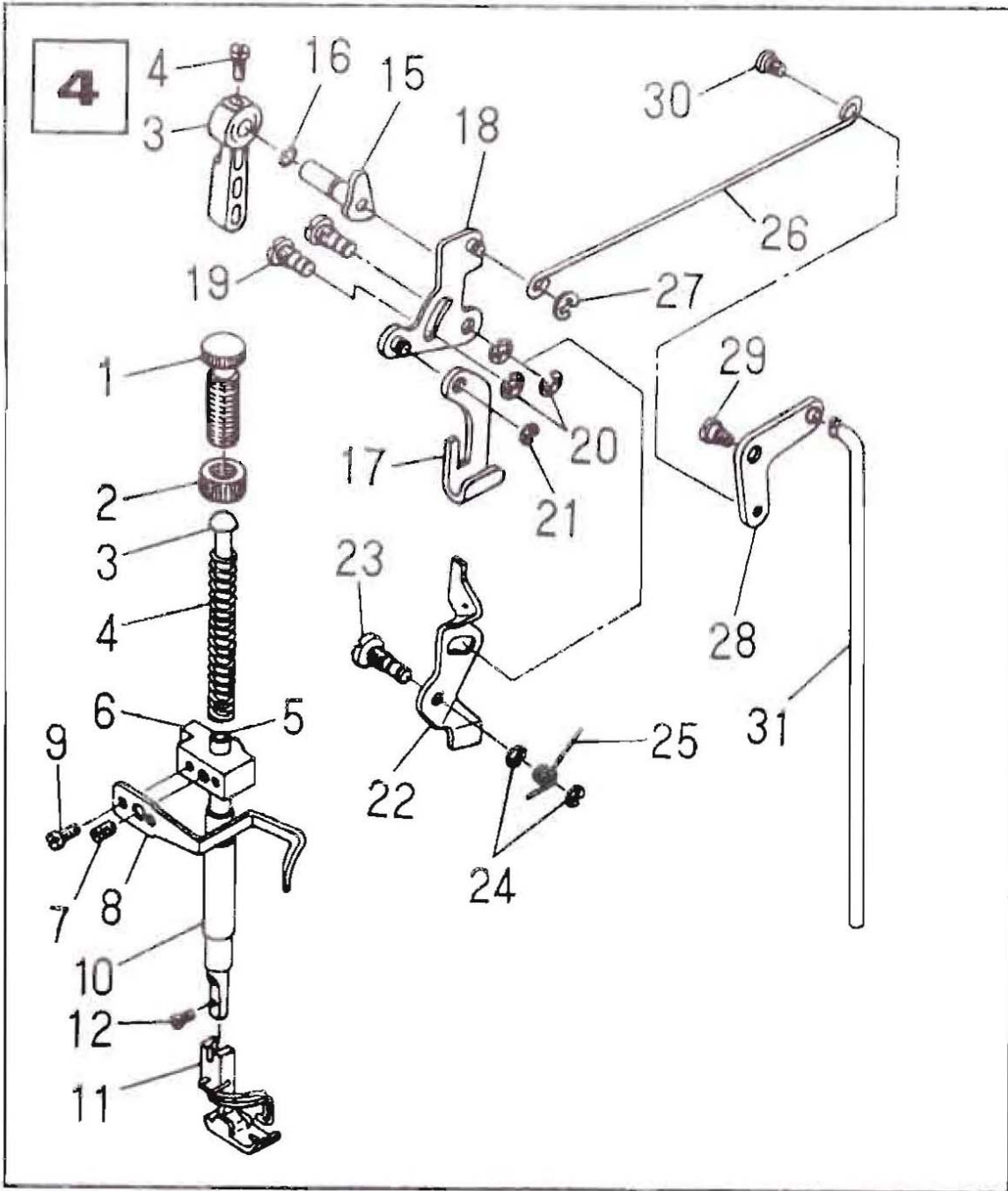


3. Needle Bar & Thread Tension Components

Ref.

No	Part No.	Description	Amount
1	H110-03-001	Needle Bar Crank Rod	1
2	H110-03-002	Needle Bearing	1
3	H110-03-003	Needle Bar connection Asm.	1
4	H110-03-004	Screw 9/64-40 L=6	1

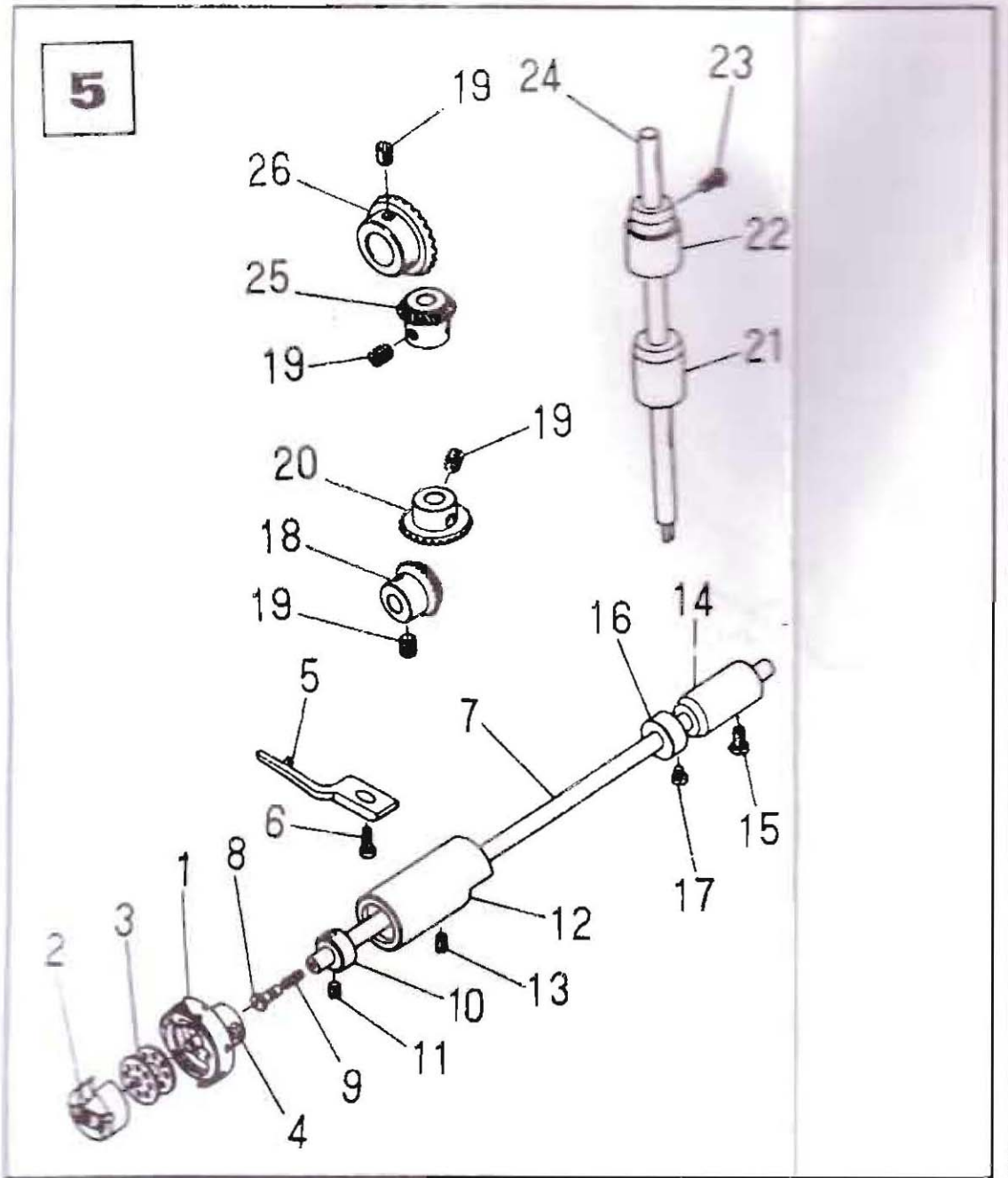
5	H110-03-005	Slid Block	1
6	H110-03-006	Needle Bar Bushing Upper	1
7	H110-03-007	Cap	1
8	H110-03-008	Needle bar bushing, Lower	1
9	H110-03-009	Needle bar thread guide	1
10	H110-03-010	Needle Bar	1
11	H110-03-011	Needle bar thread guide	1
12	H110-03-012	Screw 1/8-44 L=4.5	1
13	H110-03-013	Needle (DBX1 #14)	1
14	H110-03-014	Twohole thread eyelet	1
15	H110-03-015	Screw 3/16-28 L=6	1
16	H110-03-016	Frame thread guide right	1
17	H110-03-017	Screw 11/64-40 L=6	1
18	H110-03-018	Frame thread guide left	1
19	H110-03-019	Screw 11/64-40 L=6	1
20	H110-03-020	Tension Post Socket	1
21	H110-03-021	Take-up spring	1
22	H110-03-022	Screw	1
23	H110-03-023	Set Screw 9/64-40 L=5.5	1
24	H110-03-024	Thread releaser pin	1
25	H110-03-025	Tension disc	2
26	H110-03-026	Tension disc holder	1
27	H110-03-027	Tension Spring	1
28	H110-03-028	Tension Disc stopper	1
29	H110-03-029	Tension Nut	1
30	H110-03-030	Screw 15/64-28 L=7	1
31	H110-03-031	Tension release supporting pin	1
32	H110-03-032	Snap Ring	1
33	H110-03-033	Washer Plate	1
34	H110-03-034	Tension Release pin spring	1
35	H110-03-035	Needle thread guide pin asm.	1
36	H110-03-036	Needle thread guide pin	1
37	H110-03-037	Tension disc	2
38	H110-03-038	Tension Spring	1
39	H110-03-039	Hinge screw	1



4. Presser Bar Components

Ref.

No	Part No.	Description	Amount
1	H110-04-001	Presser Spring Regulator	1
2	H110-04-002	Nut	1
3	H110-04-003	Presser Guide Bar	1
4	H110-04-004	Presser Spring	1
5	H110-04-005	Presser Bar	1
6	H110-04-006	Needle Bar guide Bracket	1
7	H110-04-007	Screw 1/4-40 L=8	1
8	H110-04-008	Presser Bar Thread Guide	1
9	H110-04-009	Screw 9/64-40 L=8.5	2
10	H110-04-010	Presser Bar Bushing, Lower	1
11	H110-04-011	Presser Foot Asm.	1
12	H110-04-012	Screw 9/64-40 L=10.5	1
13	H110-04-013	Hand Lifter	1
14	H110-04-014	Screw	1
15	H110-04-015	Hand Lifter Cam Asm.	1
16	H110-04-016	Rubber Ring	1
17	H110-04-017	Lifting Lever	1
18	H110-04-018	Hand Lifter Link Asm.	1
19	H110-04-019	Link Shaft	2
20	H110-04-020	Snap Ring	3
21	H110-04-021	Lifting Lever Ring	1
22	H110-04-022	Tension Release Plate	1
23	H110-04-023	Tension Release Shaft	1
24	H110-04-024	Snap Ring	2
25	H110-04-025	Tension Release Return Spring	1
26	H110-04-026	Lifting Lever Connecting Rod	1
27	H110-04-027	Snap Ring	1
28	H110-04-028	Lifting Lever Link	1
29	H110-04-029	Hinge Screw	1
30	H110-04-030	Hinge Screw	1
31	H110-04-031	Connecting Rod Vertical	1



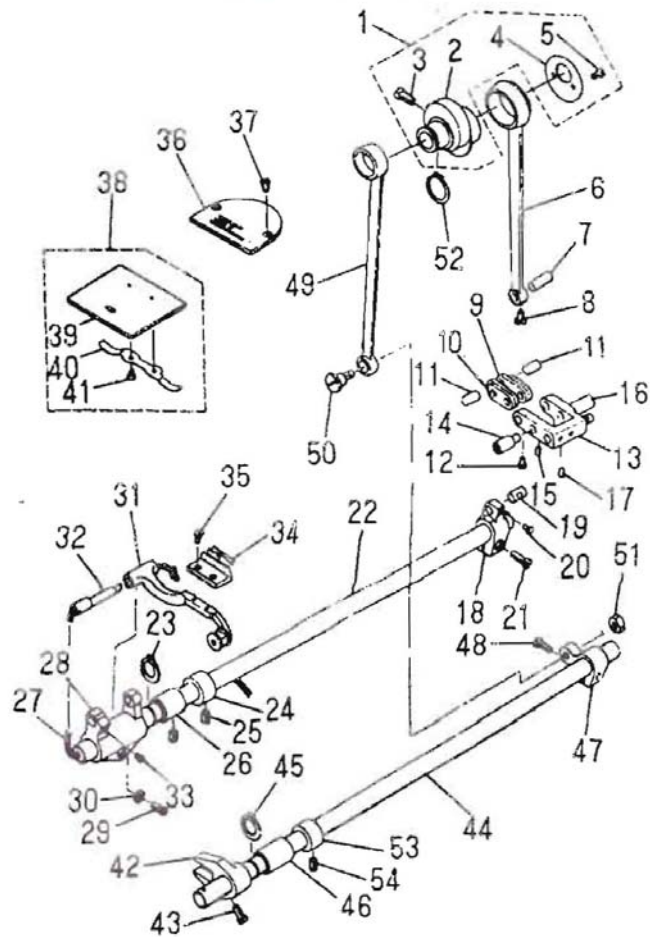
5. Hook Driving Shaft Components

Ref.

No	Part No.	Description	Amount
1	H110-05-001	Hook Asm.	1
2	H110-05-002	Bobbin Case Asm.	1
3	H110-05-003	Bobbin Case Asm.	1
4	H110-05-004	Screw	2
5	H110-05-005	Positioning Finger	1
6	H110-05-006	Screw 11/64-40 L=9.5	1
7	H110-05-007	Hook Driving shaft	1

8	H110-05-008	Oil Seal Screw	1
9	H110-05-009	Oil Wick	1
10	H110-05-010	Thrust Collar	1
11	H110-05-011	Screw 11/64-40 L=3.5	2
12	H110-05-012	Bushing asm. Front	1
13	H110-05-013	Screw	1
14	H110-05-014	Bushing , Rear	1
15	H110-05-015	Screw	1
16	H110-05-016	Thrust collar Asm.	1
17	H110-05-017	Screw 11/64-40 L=4.8	2
18	H110-05-018	Pinion Asm.	1
19	H110-05-019	Screw 1/4-40 L=8	8
20	H110-05-020	Gear asm. Large	1
21	H110-05-021	Upright Shaft Bushing, Lower	1
22	H110-05-022	Bushing, Upper	1
23	H110-05-023	Screw	1
24	H110-05-024	Upright Shaft	1
25	H110-05-025	Pinion Asm.	1
26	H110-05-026	Gear Asm.	1

6



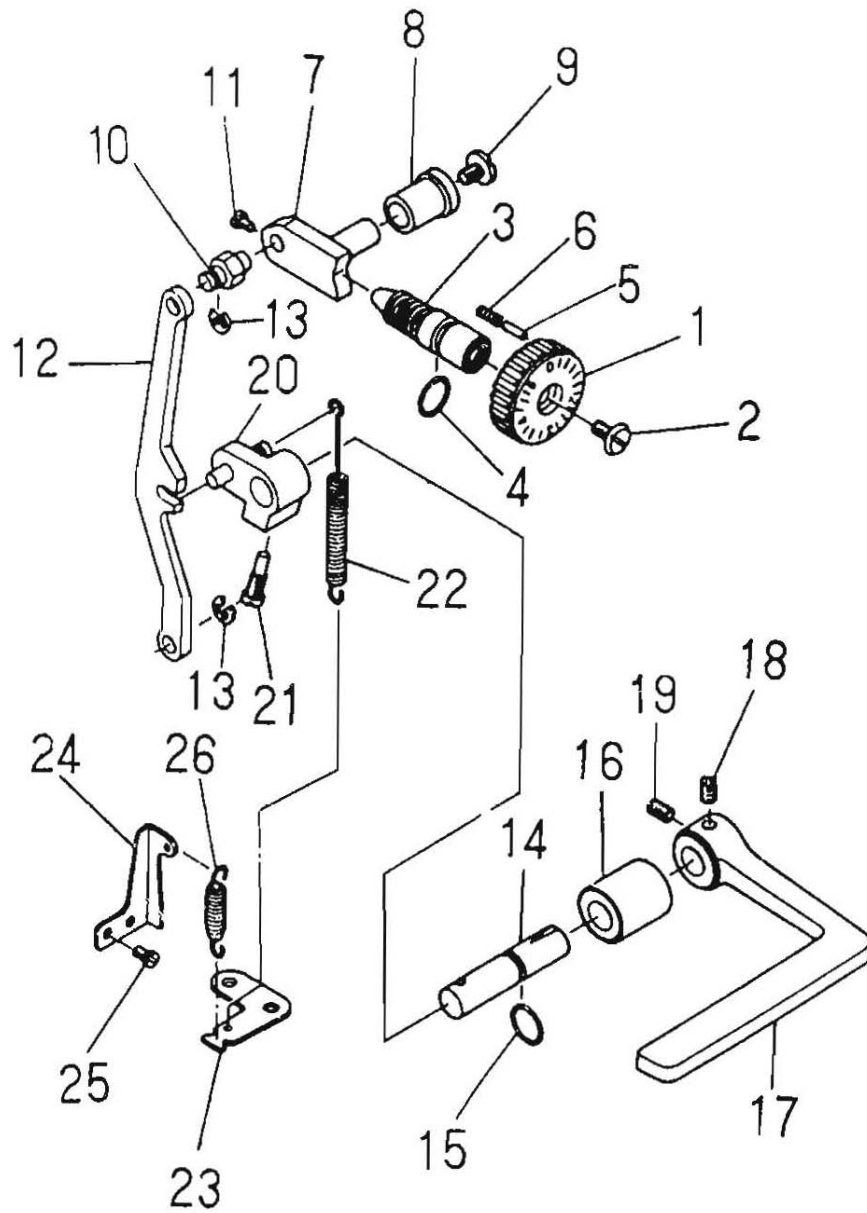
6. Feed Mechanism Components

Ref.

No	Part No.	Description	Amount
1	H110-06-001	Feed Drive Eccentric Cam asm.	1
2	H110-06-002	Feed Drive Eccentric Cam	1
3	H110-06-003	Screw 1/4-40 L=11	2
4	H110-06-004	Thrust collar	1
5	H110-06-005	Screw 9/64-40 L=6	2
6	H110-06-006	Rocker Shaft Connecting Rod	1
7	H110-06-007	Walking Foot Pin	1
8	H110-06-008	Screw 9/64-40 L=6	1
9	H110-06-009	Walking Foot Link	2
10	H110-06-010	Connecting Link	2
11	H110-06-011	Walking Foot Pin	2
12	H110-06-012	Screw 9/64-40 L=6	2
13	H110-06-013	Walking Foot Adjusting Link	1
14	H110-06-014	Adjusting Link Fulcrum Shaft	1
15	H110-06-015	Screw 15/64-28 L=7	1
16	H110-06-016	Adjusting Link Fulcrum Shaft	1
17	H110-06-017	Screw 15/64-28 L=7	1
18	H110-06-018	Feed Rocker Shaft Crank Asm.	1
19	H110-06-019	Walking Foot Pin	1
20	H110-06-020	Screw 9/64-40 L=6	1
21	H110-06-021	Screw 3/16-28 L=14	1
22	H110-06-022	Feed Rocker Shaft	1
23	H110-06-023	Retaining Ring	1
24	H110-06-024	Thrust collar Asm.	1
25	H110-06-025	Screw 1/4-40 L=6	2
26	H110-06-026	Feed rocker shaft bushing	1
27	H110-06-027	Oil Wick	1
28	H110-06-028	Feed Rocker Asm.	1
29	H110-06-029	Screw 3/16-28 L=14	1
30	H110-06-030	Washer	1
31	H110-06-031	Feed Bar asm.	1
32	H110-06-032	Feed Bar Shaft	1
33	H110-06-033	Screw 11/64-40 L=7	1
34	H110-06-034	Feed Dog	1
35	H110-06-035	Screw 1/8-44 L=6	2
36	H110-06-036	Throat Plate	1
37	H110-06-037	Screw 11/64-40 L=8.5	2
38	H110-06-038	Bed Slide Asm.	1
39	H110-06-039	Slide Plate	1
40	H110-06-040	Bed Slide Spring	1
41	H110-06-041	Screw 3/32-56 L=1.9	2
42	H110-06-042	Driving shaft crank asm. Front	1
43	H110-06-043	Screw 11/64-40 L=10.5	1
44	H110-06-044	Feed Driving Shaft	1
45	H110-06-045	Retaining Ring	1
46	H110-06-046	Feed Rocker Shaft Bushing	1
47	H110-06-047	Rear Crank Asm.	1

48	H110-06-048	Screw 3/16-28 L=12	1
49	H110-06-049	Connecting Rod	1
50	H110-06-050	Hinge Screw	1
51	H110-06-051	Nut 9/32-28	1
52	H110-06-052	Snap Ring	1
53	H110-06-053	Thrust Collar Asm.	1
54	H110-06-054	Screw 1/4-40 L=6	2

7

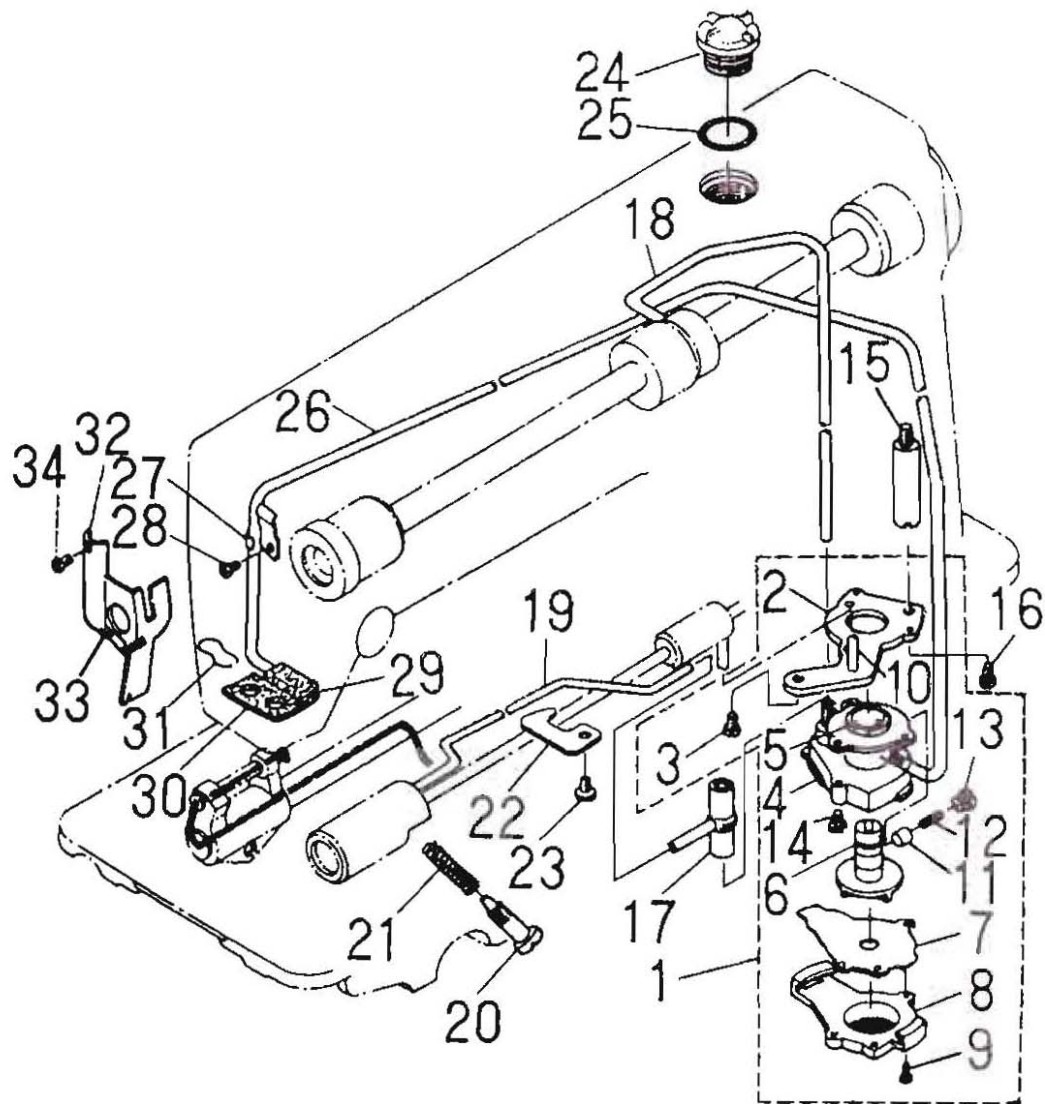


7. Feed Regulating Components

Ref.

No	Part No.	Description	Amount
1	H110-07-001	Feed Dial	1
2	H110-07-002	Screw	1
3	H110-07-003	Feed Regulator Screw	1
4	H110-07-004	Rubber Ring	1
5	H110-07-005	Pin	1
6	H110-07-006	Spring	1
7	H110-07-007	Feed Regulator	1
8	H110-07-008	Feed Redulator Bushing	1
9	H110-07-009	Screw	1
10	H110-07-010	Feed Regulator pin	1
11	H110-07-011	Screw 9/64-40 L=6	2
12	H110-07-012	Feed Regulator connecting rod	1
13	H110-07-013	Snap ring	2
14	H110-07-014	Feed Reverse Shaft	1
15	H110-07-015	Rubber Ring	1
16	H110-07-016	Feed lever metal	1
17	H110-07-017	Reverse feed control lever	1
18	H110-07-018	Screw 1/4-40 L=10	1
19	H110-07-019	Screw 1/4-40 L=8	1
20	H110-07-020	Feed Reverse Arm Asm	1
21	H110-07-021	Feed Reverse Arm Screw	1
22	H110-07-022	Feed Reverse spring	1
23	H110-07-023	Feed Spring Hook	1
24	H110-07-024	Adjusting Link spring guide	1
25	H110-07-025	Screw 11/64-40 L=5	2
26	H110-07-026	Adjusting link spring	1

8

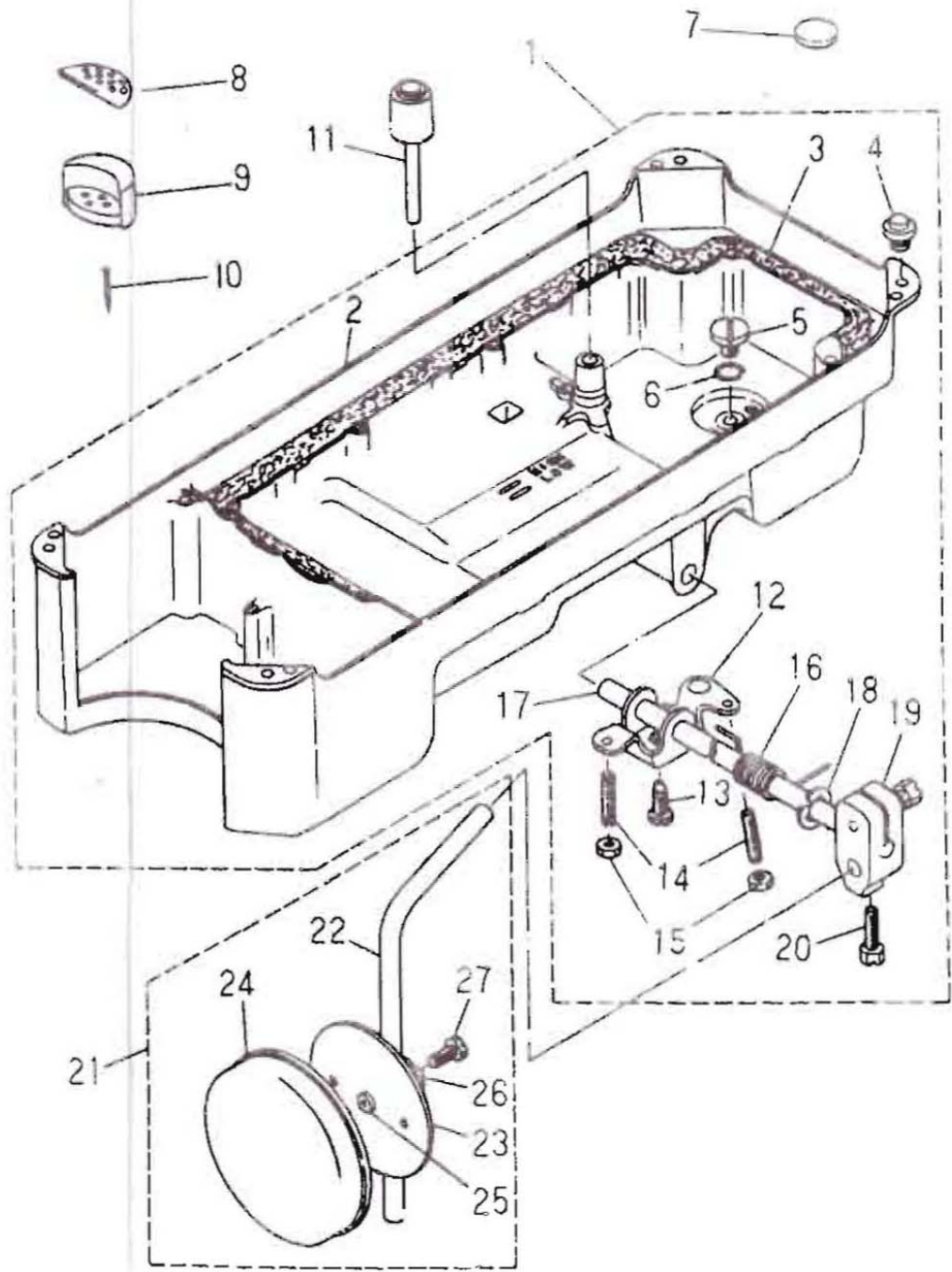


8. Lubrication components

Ref.	No	Part No.	Description	Amount
	1	H110-08-001	Lubricating Oil Pump asm.	1

2	H110-08-002	Oil Pump Installing Base	1
3	H110-08-003	Screw 15/64-28 L=9	3
4	H110-08-004	Oil Pump	1
5	H110-08-005	Oil Pump Bushing	1
6	H110-08-006	Oil Pump Impeller	1
7	H110-08-007	Oil Pump Impeller cover	1
8	H110-08-008	Lubricating Oil Pump cover	1
9	H110-08-009	Screw	3
10	H110-08-010	Hook Driving Shaft oil tube	1
11	H110-08-011	Plunger	1
12	H110-08-012	Plunger Spring	1
13	H110-08-013	Plunger Screw	1
14	H110-08-014	Screw	1
15	H110-08-015	Oil Pump Support	1
16	H110-08-016	Screw 11/64-40 L=9.5	1
17	H110-08-017	Rubber Joint	1
18	H110-08-018	Main Shaft Oil Tube	1
19	H110-08-019	Oil Tube	1
20	H110-08-020	Oil adjusting screw	1
21	H110-08-021	Spring	1
22	H110-08-022	Tube holder Lower	1
23	H110-08-023	Screw 15/64-28 L=9	1
24	H110-08-024	Oil Sight window	1
25	H110-08-025	Rubber Ring	1
26	H110-08-026	Oil Return tube	1
27	H110-08-027	Oil return tube holder	1
28	H110-08-028	Screw 3/16-28 L=6	1
29	H110-08-029	Anti-dust oil felt	1
30	H110-08-030	Oil Felt	1
31	H110-08-031	Oil felt presser	1
32	H110-08-032	Arm oil Shield	1
33	H110-08-033	Oil Wick	1
34	H110-08-034	Screw 1/8-44 L-4	1

9

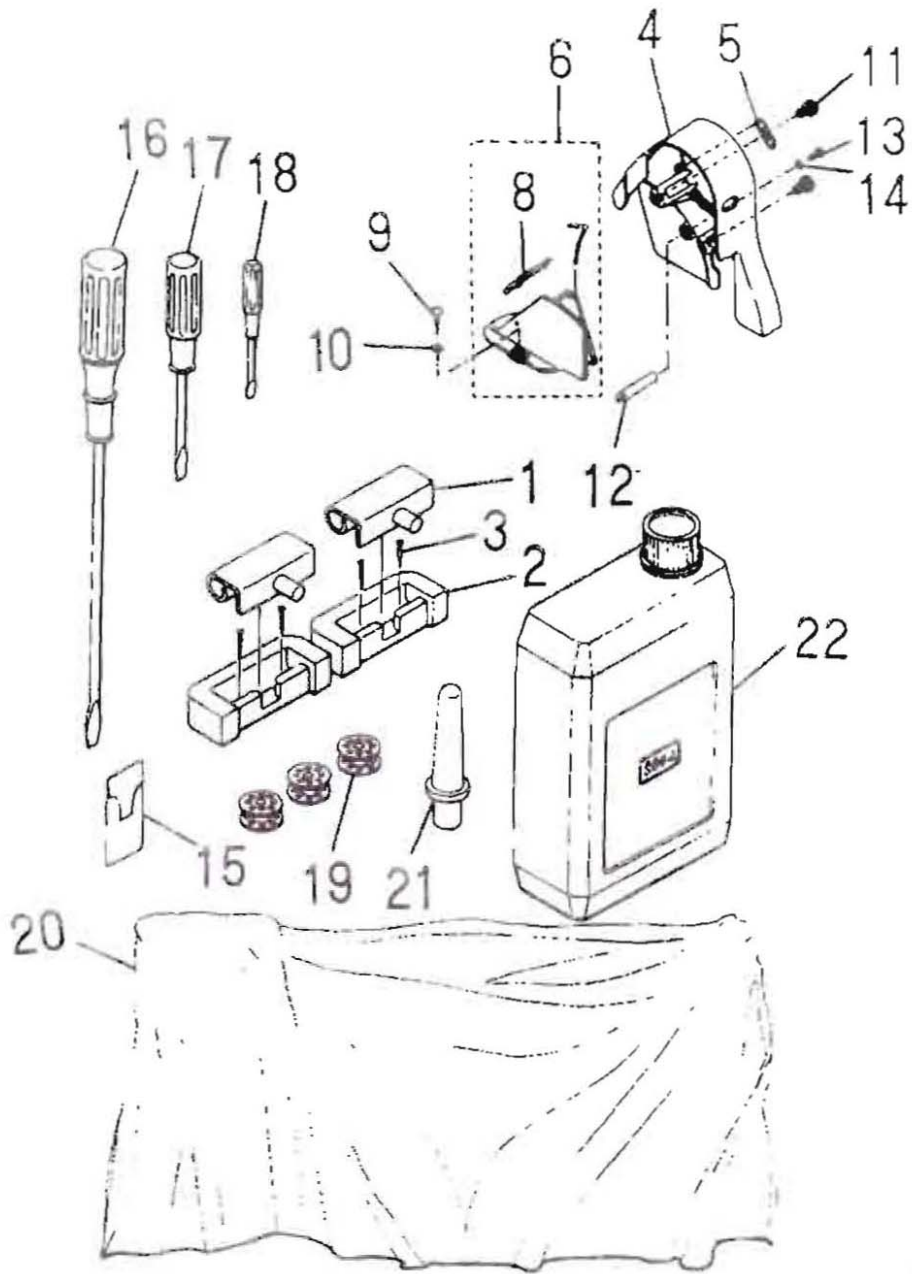


9. Oil Reservoir & Knee Lifter Components

Ref.

No	Part No.	Description	Amount
1	H110-09-001	Oil Reservoir Asm.	1
2	H110-09-002	Oil Reservoir	1
3	H110-09-003	Gasket	1
4	H110-09-004	Rubber Cushion	4
5	H110-09-005	Screw	2
6	H110-09-006	Rubber Ring	2
7	H110-09-007	Oil Reservoir magnet	1
8	H110-09-008	Oil Reservoir Felt Cushion	2
9	H110-09-009	Oil Reservoir Rubber Cushion	2
10	H110-09-010	Nail	4
11	H110-09-011	Knee Press Lifter Rod	1
12	H110-09-012	Connecting Rod, Vertical	1
13	H110-09-013	Screw	1
14	H110-09-014	Screw 15/64-28 L=30	2
15	H110-09-015	Nut 15/64-28	2
16	H110-09-016	Spring	1
17	H110-09-017	Knee Press Rod	1
18	H110-09-018	Snap Ring	1
19	H110-09-019	Bearing Bracket	1
20	H110-09-020	Screw 9/32-20 L=20	2
21	H110-09-021	Knee Press plate asm	1
22	H110-09-022	knee lifter plate rod	1
23	H110-09-023	Knee press plate	1
24	H110-09-024	Knee press plate cover	1
25	H110-09-025	Rubber	1
26	H110-09-026	Knee press plate holder	1
27	H110-09-027	Screw 15/64-28 L=15	1

10-1

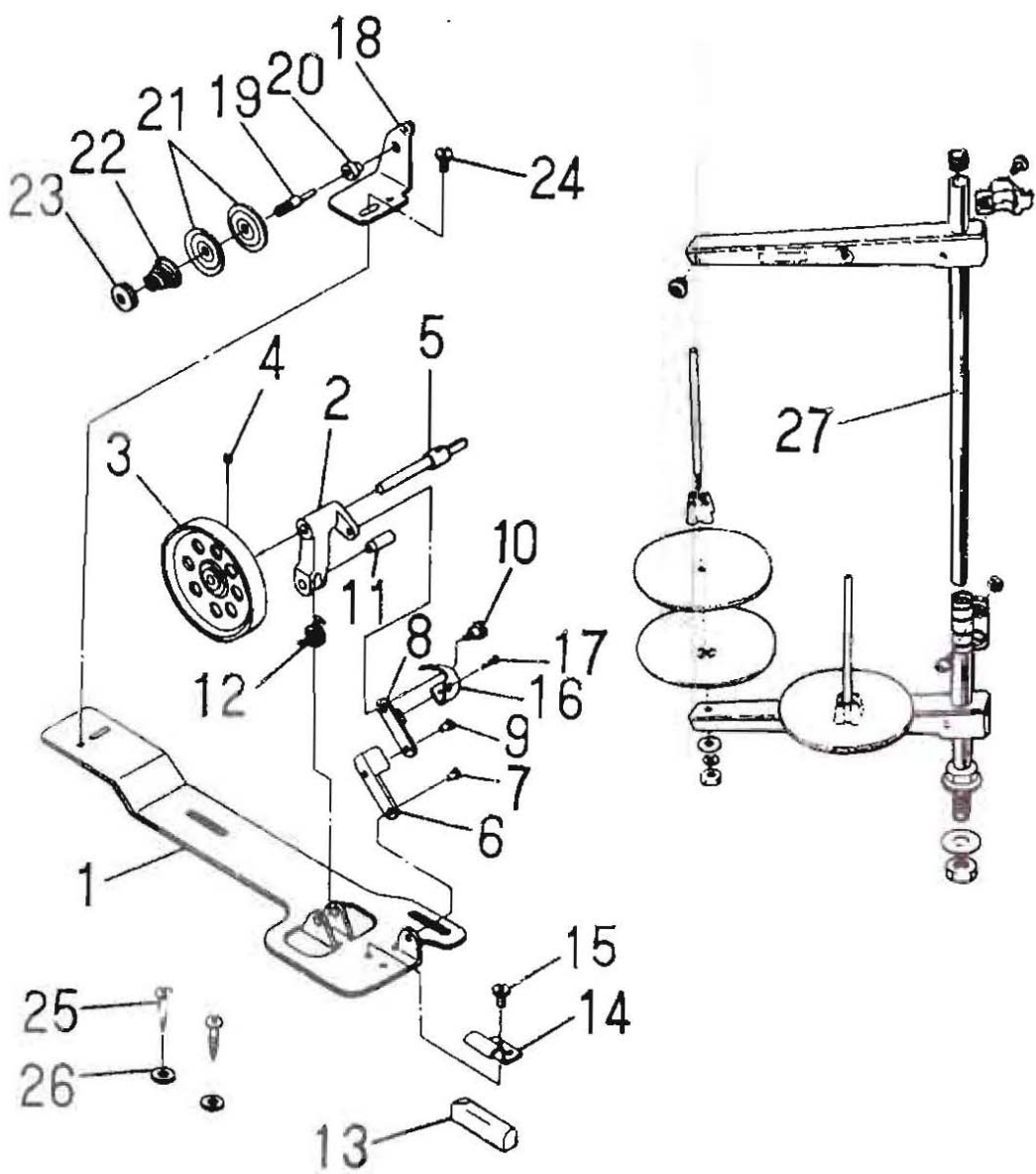


10. Machine Head Accessories

Ref.

No	Part No.	Description	Amount
1	H110-10-001	Machine hinge plate asm.	2
2	H110-10-002	Machine hinge plate	2
3	H110-10-003	Nail	4
4	H110-10-004	Belt cover A	1
5	H110-10-005	Belt cover A cap	1
6	H110-10-006	Belt cover B asm	1
7	H110-10-007	Belt cover b	1
8	H110-10-008	Belt cover B cover asm.	1
9	H110-10-009	Wood Screw D=4.5 L20	2
10	H110-10-010	Washer	2
11	H110-10-011	Belt cover A Screw	2
12	H110-10-012	Belt cover support	1
13	H110-10-013	Screw 3/16-28 L=14	1
14	H110-10-014	Washer	1
15	H110-10-015	Needle	1
16	H110-10-016	Screw Driver large	1
17	H110-10-017	Screw Driver medium	1
18	H110-10-018	Screw Driver small	1
19	H110-10-019	Bobbin	3
20	H110-10-020	Machine head cover	1
21	H110-10-021	Machine Rest Pin	1
22	72T9-017	Oil Reservoir Asm.	1

10-2

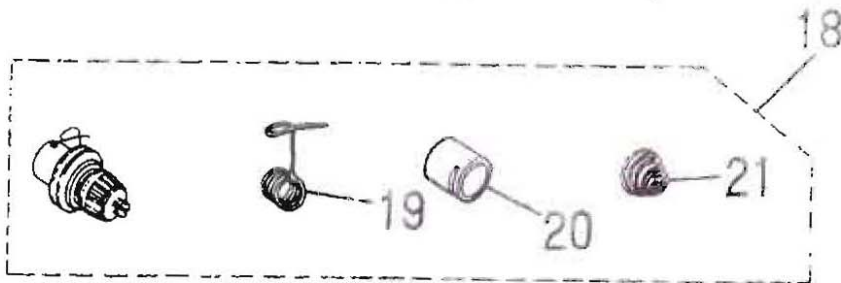
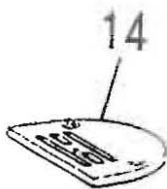
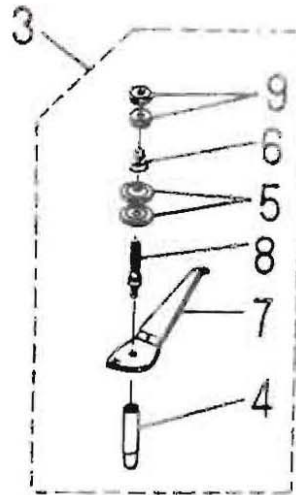
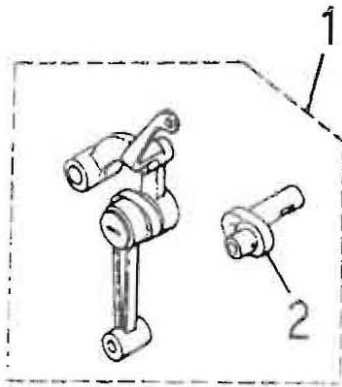


11.Machine head accessories (2)

Ref.

No	Part No.	Description	Amount
1	H110-11-001	Bobbin Winder base asm.	1
2	H110-11-002	Thread winder base asm.	1
3	H110-11-003	Thread winder asm	1
4	H110-11-004	Screw	1
5	H110-11-005	Bobbin winder shaft	1
6	H110-11-006	Connecting rod	1
7	H110-11-007	Connecting rod pin	1
8	H110-11-008	Bobbin winder frame rod	1
9	H110-11-009	Bobbin winder frame rod pin	1
10	H110-11-010	Screw 1/8-44 L=12.5	1
11	H110-11-011	Bobbin Winder Frame pin	1
12	H110-11-012	Bobbin Winder frame spring	1
13	H110-11-013	Rubber brake	1
14	H110-11-014	Presser Plate	1
15	H110-11-015	Screw 11/64-40 L3	1
16	H110-11-016	Bobbin winder spring	1
17	H110-11-017	Hinge screw	1
18	H110-11-018	Thread tension bracket asm.	1
19	H110-11-019	Screw	1
20	H110-11-020	Bobbin winder tension disc collar	1
21	H110-11-021	Tension disc	2
22	H110-11-022	Tension spring	1
23	H110-11-023	Thread tension stud nut	1
24	H110-11-024	Screw 11/64-40 L=7.8	1
25	H110-11-025	Wood Screw	2
26	H110-11-026	Washer	2
27	GXJ-2	Thread stand	1

Model GC1088-A (For Light Weight Materials)

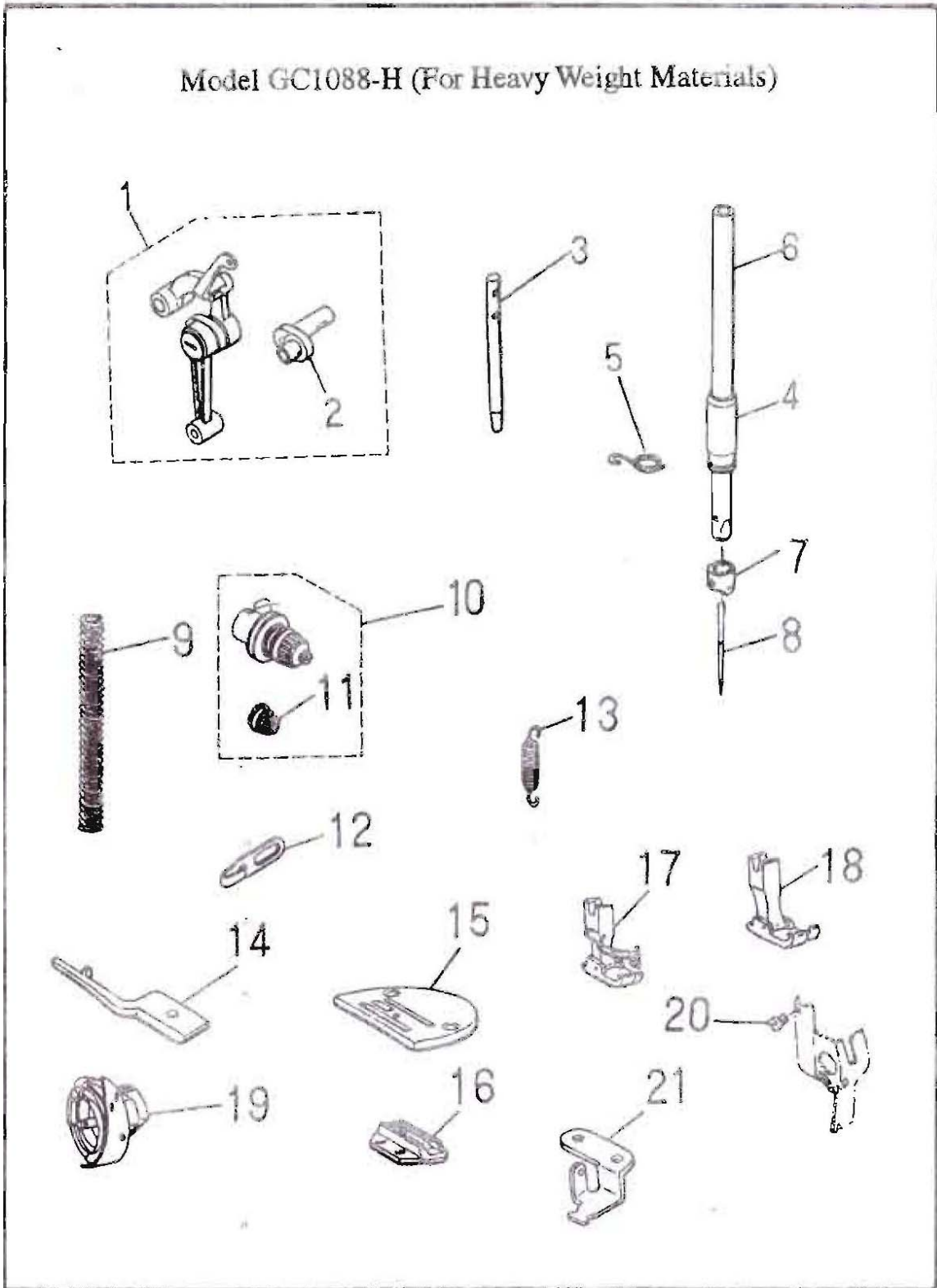


Model for Lightweight Materials

Ref.

No	Part No.	Description	Amount
1	H110-11-001	Link thread take up leaver asm	1
2	H110-11-002	Needle bar crank A	1
3	H110-11-003	Needle thread guide pin asm	1
4	H110-11-004	Needle thread guide pin	1
5	H110-11-005	Tension disc	2
6	H110-11-006	Needle thread tension spring	1
7	H110-11-007	Needle thread guide plate	1
8	H110-11-008	Needle thread guide pin	1
9	H110-11-009	Needle thread tension thumb nut	2
10	H110-11-010	Hinged presser foot asm	1
11	H110-11-011	Feed dial	1
12	H110-11-012	Feed dog	1
13	H110-11-013	Bobbin	1
14	H110-11-014	Throat plate	1
15	H110-11-015	Hand lifter cam asm	1
16	H110-11-016	Presser spring	1
17	H110-11-017	Needle (DAX11 #9)	1
18	H110-11-018	Thread tension asm	1
19	H110-11-019	Take up spring	1
20	H110-11-020	Tension post socket	1
21	H110-11-021	Thread tension spring	1

Model GC1088-H (For Heavy Weight Materials)



Model for Heavy Weight Materials

Ref.

No	Part No.	Description	Amount
1	H110-12-001	Link thread take-up lever asm	1
2	H110-12-002	Needle bar crank H	1
3	H110-12-003	Thread guide pin	1
4	H110-12-004	Needle bar bushing lower	1
5	H110-12-005	needle bar thread guide	1
6	H110-12-006	Needle Bar	1
7	H110-12-007	Needle Bar thread guide	1
8	H110-12-008	Needle (DBx1 #21)	1
9	H110-12-009	Presser spring	1
10	H110-12-010	Thread tension asm.	1
11	H110-12-011	Tension spring	1
12	H110-12-012	arm thread guide (HA)	1
13	H110-12-013	Adjust link spring	1
14	H110-12-014	Positioning finger	1
15	H110-12-015	Throat Plate (H)	1
16	H110-12-016	Feed dog (H)	1
17	H110-12-017	Hinged presser foot asm	1
18	H110-12-018	Presser foot asm.	1
19	H110-12-019	Lubricating bobbin asm	1
20	H110-12-020	Screw 1/8-44 L=2.5	1
21	H110-12-021	Feed spring Hook	1