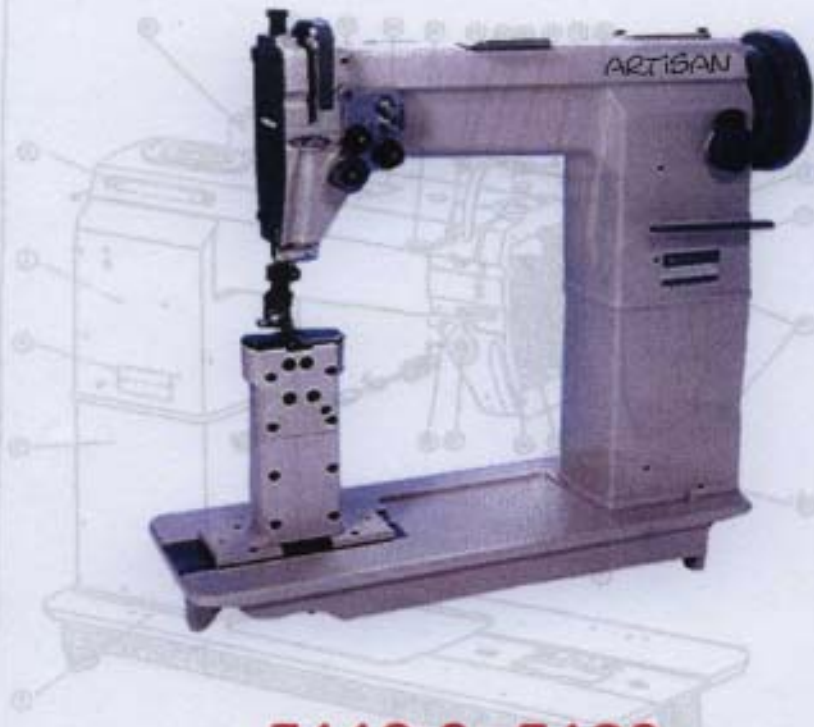


# ARTISAN<sup>®</sup>

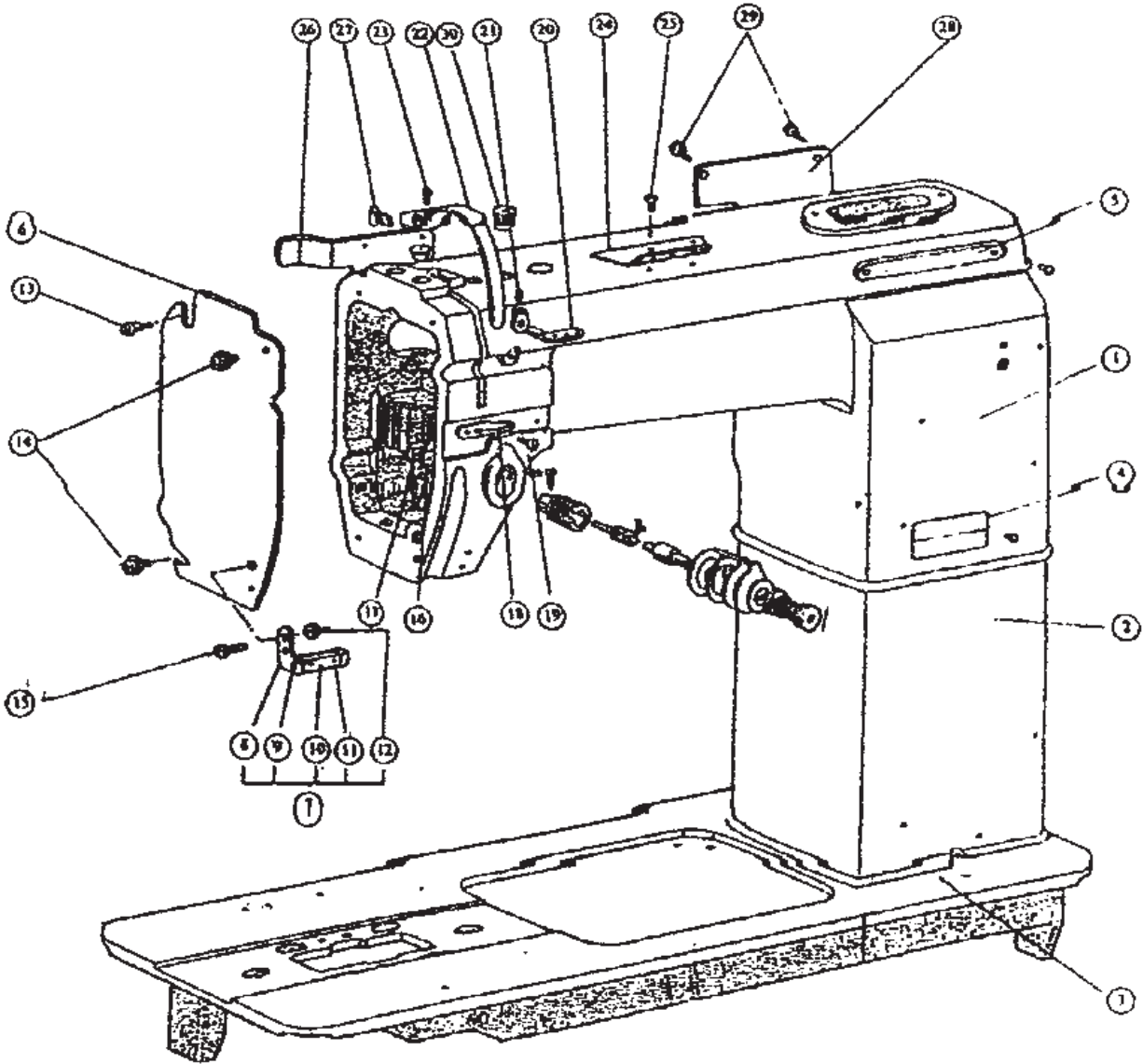
**Post Bed Lockstitch Sewing Machines  
Single and Double Needle Models**



**5110 & 5120**

**INSTRUCTION  
and SPARE PARTS  
MANUAL**

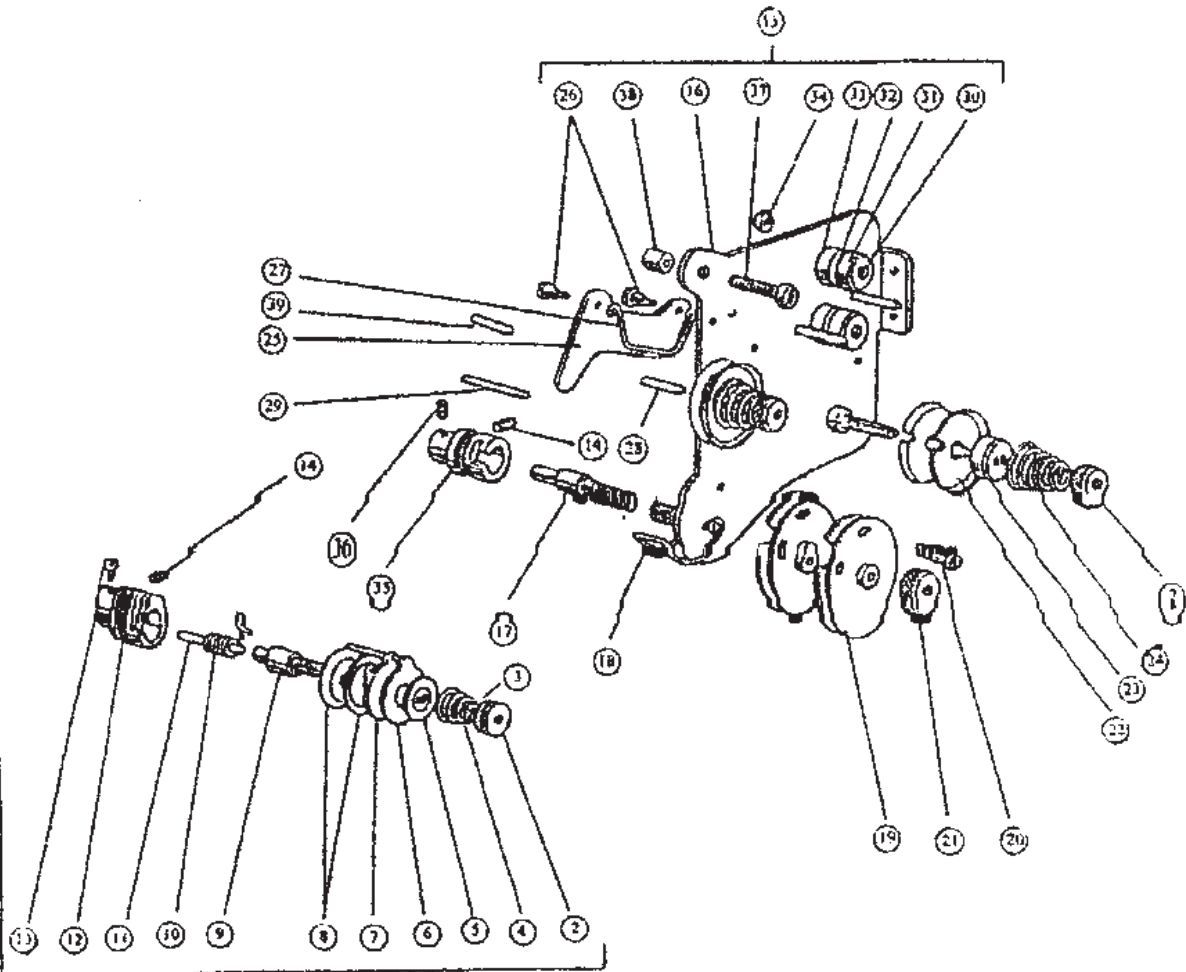
1



No.	Ref. No.	Description	ACME I A 3		
			Single	Double	
1	24H1-002A1	Arm	1	1	
2	24H1-002A2	Column	1	1	
3	24H1-002A3	Bed	1	1	
4	24H1-003B1	Model mark plate	1		
4	25H1-001A	Model mark plate		1	
5	24H1-003B2	Trade mark plate	1	1	
6	24H1-004C1	Face plate	1	1	
7	24H1-004C2	Thread guide (complete)	1	1	
8	24H1-004C2a	Thread guide	1	1	
9	24H1-004C2c	Felt	1	1	
10	24H1-004C2b	Stopper	1	1	
11	22T1-021G3	Screw	2	2	
12	82T13-001A1a3	Nut	1	1	
13	24H1-004C3	Screw	1	1	SM11/64"(4.37) x 40
14	72T1-017	Screw	2	2	
15	72T1-016	Screw	1	1	
16	24H3-005	Oil guide plate	1	1	
17	24H1-006	Spacer	1	1	
18	24H1-007	Thread guide	1	1	
19	24H1-008	Screw	2	2	SM3/16"(4.76) x 28
20	22T1-010	Thread guide	1		
21	22T1-011	Screw	1		
22	24H1-009	Thread take-up cover	1	1	
23	72T1-016	Screw	1	1	
24	24H1-010	Thread guide (arm)	1	1	
25	82T1-006	Screw	2	2	
26	24H1-011	Side cover	1	1	
27	72T1-017	Screw	2	2	
28	24H1-012D	Arm side cover	1	1	
29	72T1-017	Screw	3	3	
30	20H12-000C	Bushing cap	1	1	

**2**

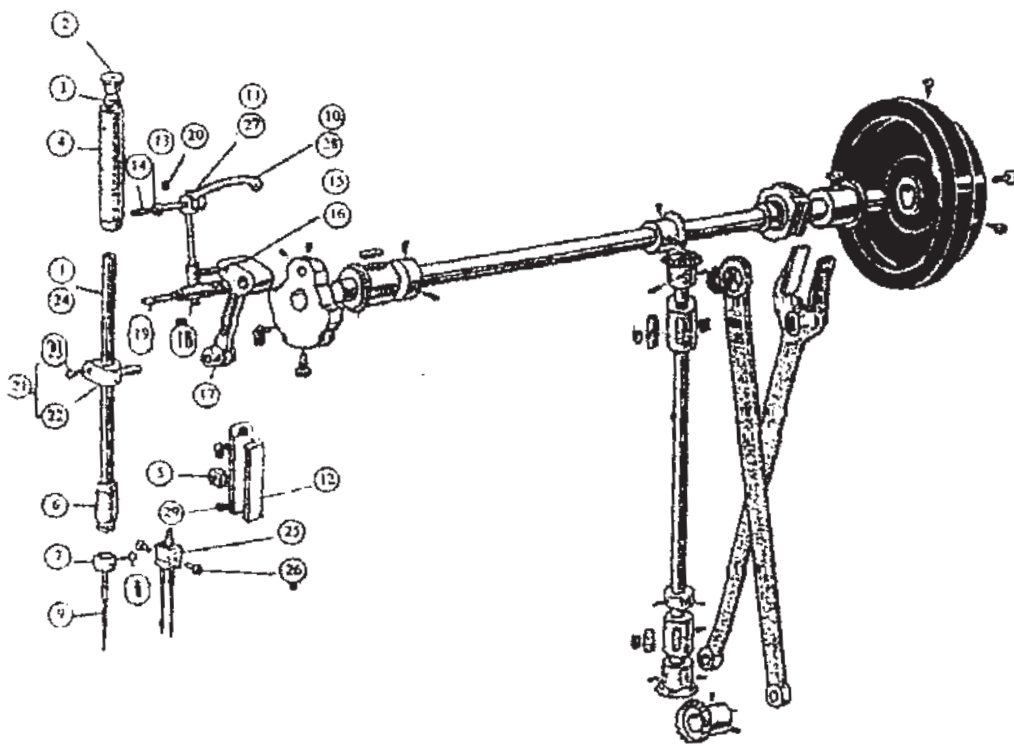
**Post bed Double  
needle lock stitch**



**Post bed Single  
needle lock stitch**

1	24H2-001A	Thread tension regulator (complete)	1		
2	72T1-007F1	Thumb nut (complete)	3	2	
3	22T1-012F10	Stop plate	1		
4	74T1-004D	Thread tension spring	1		
5	72T1-007F2	Thread tension releasing disc	1		
6	24H2-001A2	Stop plate	1		
7	24H2-001A3	Tension regulator bracket	1		
8	72T1-007F5	Tension disc	2		
9	24H2-001A4	Thread tension stud	1		SM1/4" (6.35) x 40
10	24H2-001A5	Thread take-up spring	1		
11	24H2-001A6	Thread tension releasing pin	1		
12	72T1-007F3	Regulator bushing	1		
13	22T1-012F8	Screw	1		
14	72T1-008	Screw	1		
15	25H2-001A	Thread tension regulator (complete)	1		
16	25H2-001A1	Mounting plate (complete)	1		
17	25H2-001A2	Thread tension stud	1		SM1/4" x 40
18	25H2-001A3	Thread take-up spring	1		
19	25H2-001A4	Thread controller disc	2		
20	25H2-001A5	Screw	1		SM3/32" (3.38) x 56
21	25H2-001A8	Regulating thumb nut	1		SM1/4" (6.35) x 40
22	25H2-001A6	Tension disc	4		
23	25H2-001A7	Thread regulator presser disc	2		
24	74T1-004D	Thread tension spring	2		
25	25H2-001A9	Tension releasing plate	1		
26	25H2-001A10	Screw	2		SM9/64" (3.57) x 40
27	25H2-001A11	Releasing spring	1		
28	25H2-001A12a	Thread releasing pin	1		
29	25H2-001A12b	Thread releasing pin	1		
30	25H2-001A13a	Screw	2		
31	25H2-001A16	Tension spring	2		
32	25H2-001A14	Thread guide disc	2		
33	25H2-001A15	Guide bracket	2		
34	25H2-001A17	Nut	2		SM9/64" x 40
35	25H2-001A18	Screw	1		
36	82T1-008D1	Screw	1		
38	25H2-002	Pipe	1		
39	25H2-003	Pin	1		

3



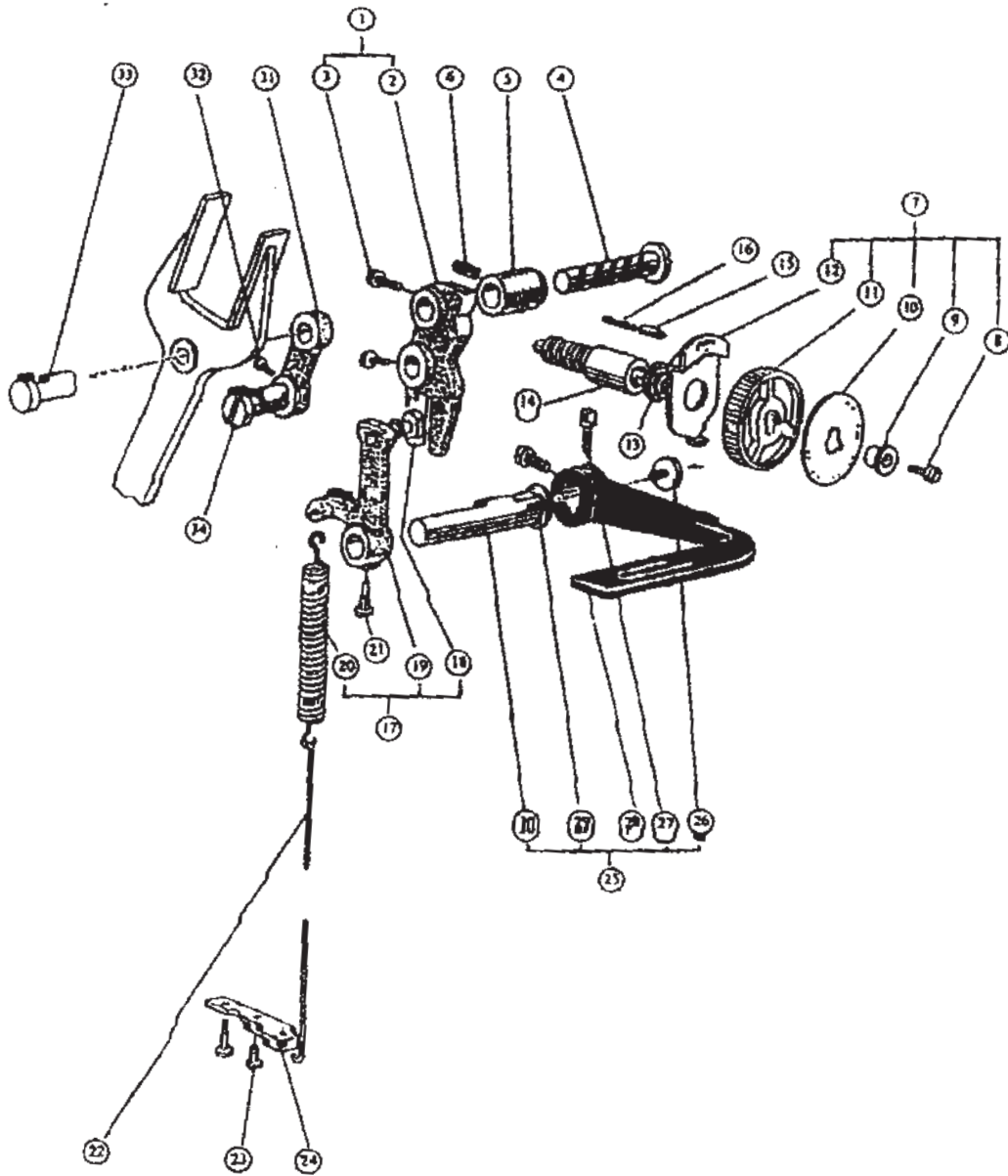
Ref. No.	Description	Needle Number		Remarks
		Single	Double	
24H3-001A1	Needle bar	1		
20H12-000C	Bushing cap	1	1	
22T2-010	Felt	1	1	
20H3-006C	Needle bar bushing (upper)	1	1	
22T2-020	Square block	1	1	
22T2-006	Needle bar bushing (under)	1	1	
73T2-003	Thread guide	1		
22T2-017	Screw	1		
24H3-001A3	Needle	1	2	DP = 5-16
24H3-002B1a	Take-up lever (complete)	1		
24H3-002B1a1	Lever and side block (complete)	1		
22T2-018	Needle bar connecting link guide	1	1	
24H3-002B1a2-1	Take-up lever support stud	1	1	
24H3-002B1a2-2	Oil wick	1	1	
24H3-002B1a3	Plug	1	1	
24H3-002B1a4	Oil wick	1	1	
24H3-002B1b	Needle bar link	1	1	
24H3-002B2	Crank pin	1	1	
24H3-002B3	Oil wick	1	2	
24H3-002B4	Screw	1	1	
24H3-002B5	Needle bar connecting stud (complete)	1	1	
22T2-001A8	Needle bar connecting stud (complete)	1	1	
22H2-001A1	SCREW	1	1	
25H3-001A1	Needle bar		1	
25H3-001A2a	Needle clamp		1	
25H3-001A2b	Needle clamp		1	
25H3-001A2c	Needle clamp		1	
25H3-001A3	Screw		2	SM 1/8" (3.18) x 44
25H3-002B1a1	Lever and side block (complete)		1	
25H3-002B1a	Take-up lever (complete)		1	
22T2-019	Screw	2	2	





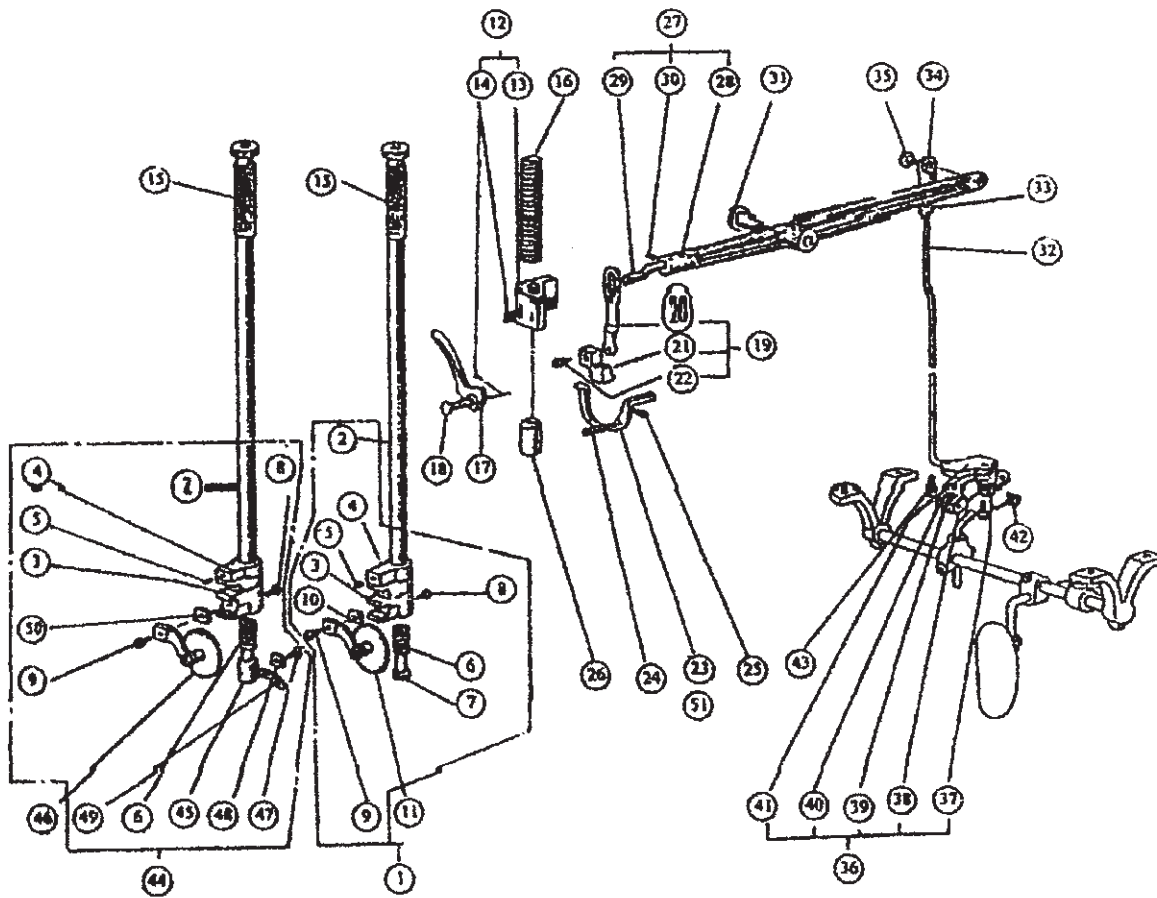
NO.	REF. NO.	DESCRIPTION	Quantity		Remarks
			Single	Double	
1	24H4-001A1	Upper shaft	1	1	
2	24H4-001A2a	Crank	1	1	
3	22T3-002B2	Screw	1	1	
4	22T2-004B2	Screw	1	1	
5	22T2-007	Screw	1	1	
6	22T2-006	Screw	1	1	
7	24H4-001A3	Upper shaft bushing (left) (complete)	1	1	
8	20H1-006J2	Felt	1	1	
8	20H1-006J3	Felt	1	1	
9	24H4-001A3a	Upper shaft bushing (left)	1	1	
10	22T6-005B	Upper shaft collar (complete)	1	1	
11	22T6-005B1	Upper shaft collar (complete)	1	1	
12	22T3-002B2	Screw	2	2	
13	22T3-010E2a	Bevel gear (upper) (complete)	1	1	
14	22T2-005B3	Screw	4	4	
15	22T3-010E2a1-2	Bevel gear (upper shaft)	1	1	
16	22T3-010E2a2-2	Bevel gear (vertical shaft)	1	1	
17	24H4-001A4a	Feed cam (complete)	1	1	
18	24H4-001A4a1	Feed cam (complete)	1	1	
19	72T3-005D1a3	Screw	2	2	
20	72T3-005D1a2	Feed cam ring	1	1	
21	20H2-003A1a2	Felt	1	1	
22	20H2-003A1a1	Spring	1	1	
23	20H1-006I	Upper shaft bushing (right) (complete)	1	1	
24	20H1-006I2	Upper shaft bushing (right)	1	1	
25	20H1-006I1	Felt	1	1	
26	24H4-001A4b1	Crank rod	1	1	
27	22T3-009D1b	C-type stopper	1	1	
28	24H4-001A5	Feed forked connection	1	1	
29	24H4-001A6	Pulley (complete)	1	1	
30	24H4-001A6a	Pulley	1	1	
31	22T3-007C2	Screw	2	2	
32	22T3-008	Screw	1	1	
33	20H1-006G	Vertical shaft bushing upper (complete)	1	1	
34	20H1-006G2	Felt	1	1	
35	20H1-006G1	Felt	1	1	
36	20H1-006G3	Vertical shaft bushing upper	1	1	
37	24H4-002B1a	Vertical shaft bushing	1	1	
38	20H1-006H	Vertical shaft bushing under (complete)	1	1	
39	20H1-006H1	Vertical shaft bushing under	1	1	
40	20H1-006G2	Felt	1	1	
41	20H1-006G1	Felt	1	1	
42	22T2-002	Screw	2	2	
43	22T3-010E2b	Bevel gear (under) (complete)	1	1	
44	22T2-005B3	Screw	4	4	
45	22T3-010E2b2-	Bevel gear (vertical shaft)	1	1	
46	22T3-010E2b1-	Bevel gear (lower shaft)	1	1	

5



## 5. STITCH REGULATOR MECHANISM

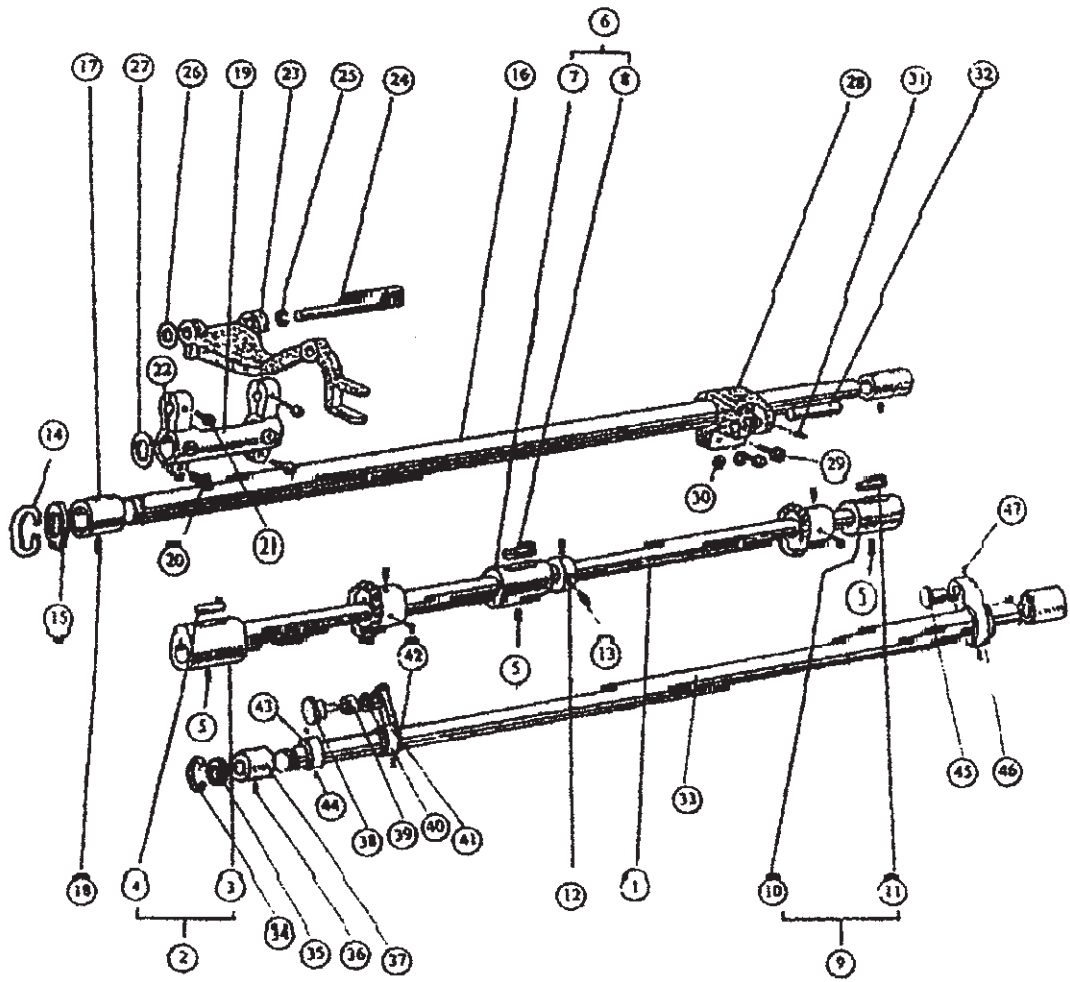
No.	Ref. No.	Description	Needle Number	
			Single	Double
1	24H5-001A	Feed regulator (complete)	1	1
2	24H5-001A1	Feed regulator	1	1
3	22T5-001A4	Screw	2	2
4	22T5-004	Shaft	1	1
5	24H5-002	Bushing	1	1
6	22T2-902	Screw	1	1
7	82T5-017D	Feed screw (complete)	1	1
8	82T5-017D6	Screw	1	1
9	82T5-017D5	Bushing	1	1
10	82T5-017D4	Stitch length indicating plate	1	1
11	82T5-017D2a1	Dial	1	1
12	82T5-017D3	Stopper pin release lever	1	1
13	82T5-017D7	Coil spring	1	1
14	82T5-017D1	Screw bar	1	1
15	82T5-003	Pin	1	1
16	22T5-009	Spring	1	1
17	20H5-001C	Feed regulating arm (complete)	1	1
18	22T5-012E1a	Square block (complete)	1	1
19	22T5-012E1	Feed regulating arm	1	1
20	20H5-001C1	Spring	1	1
21	22T5-013	Screw	1	1
22	24H5-004	Knee lifter rod	1	1
23	22T2-019	Screw	2	2
24	24H5-005	Bracket	1	1
25	20H5-002	Reverse lever (complete)	1	1
26	22T5-010D3	Screw	1	1
27	22T5-001A4	Screw	2	2
28	72T5-006C1	Reverse lever	1	1
29	22T5-011	Spring washer	1	1
30	20H5-002A	Shaft	1	1
31	22T5-001A2	Feed connecting link	1	1
32	22T5-001A4	Screw	1	1
33	22T5-001A1	Shaft	1	1
34	22T5-001A3	Shaft	1	1



## 6. PRESSER FOOT AND KNEE LIFTER MECHANISM

No.	Ref. No.	Description	Needle Number		Remarks
			Single	Double	
	24H6-001A	Roller presser bar (complete)	1		
	24H6-001A1	Presser bar	1	1	
3	24H6-001A2	Bracket	1	1	
4	24H6-001A3	Stopper	1	1	
5	24H6-001A4	Screw	1	1	SM15/64" x 28 x 8
6	24H6-001A5	Spring	1	1	
7	24H6-001A6	Spring stud	1		
8	24H6-001A7	Screw	2	2	SM9/64" x 40 x 3.5
9	24H6-001A8	Screw	1	1	SM11/64" x 32
10	24H6-001A9	Spacer	1		
11	24H6-002B	Roller presser (complete)	1		
12	24H6-003C	Presser bar holder (complete)	1	1	
13	24H6-003C1	Presser bar holder	1	1	
14	72T3-005D1a3	Screw	2-	2	
15	24H6-004	Presser releasing thumb screw	1	1	SM1/2" x 28 x 33
16	24H6-005	Presser spring	1	1	
17	20H8-006	Presser bar lifter	1	1	
18	20H8-007	Presser bar lifter pin	1	1	
19	24H6-006D	Knee lifter lever link (complete)	1	1	
20	24H6-006D2	Knee lifter lever link	1	1	
21	24H6-006D1	Knee lifter lever	1	1	
22	24H6-006D3	Screw	1	1	SM3/16" x 32
23	24H6-007	Tension releasing lever	1		
24	24H6-008	Screw	1	1	SM11/64" x 40 x 23.5
25	24H6-009	Coil spring	1	1	
26	72T7-009	Presser bar bushing	1	1	
27	24H6-010B	Knee lifter lever (complete)	1	1	
	24H6-010B1	Knee lifter lever	1	1	
	24H6-010B2	Pin	1	1	
30	72T3-005D1a3	Screw	1	1	
31	20H8-013	Screw	1	1	
32	24H6-011F1	Knee lifter lever connection rod	1	1	
33	20H8-016	Not	1	1	
34	20H8-015	Knee lifter lever joint	1	1	
35	20H8-014	Screw	1	1	
36	24H6-012G	Presser bar lever	1	1	
37	G8119-86	(complete)	1	1	
38	G8879-86	Spring pin	1	1	
39	24H6-012Q2	Roller	1	1	
40	24H6-012G1	Knee lifter lever (lower)	1	1	
41	20H8-018A	Bracket	1	1	
42	24H6-013	Spring	1	1	
43	20H8-020	Screw	2	2	
44	25H6-001A1	Roller presser bar (complete)		1	
45	25H6-001A1a	Spring stud		1	
46	25H6-001A1b	Roller presser (complete)		1	
47	25H6-001A1c	Screw		1	
48	25H6-001A1d	Spacer		1	
49	25H6-001A2a	Presser foot		1	
49	25H6-001A2b	Presser foot		1	
49	25H6-001A2c	Presser foot		1	
50	25H6-001A4a	Spacer		1	
51	25H6-0Q2	Tension releasing lever		1	

7



**7. LOWER SHAFT AND FEED ROCK SHAFT MECHANISM**

No.	Ref. No.	Description	Needle Number		Remarks
			Single	Double	
1	24H7-001A1	Lower shaft	1	1	
2	20H1-006H	Lower shaft bushing left (complete)	1	1	
3	20H1-006H1	Lower shaft bushing left	1	1	
4	20H1-006G1	Felt	1	1	
4	20H1-006G2	Oil wick	1	1	
5	72T2-00SD1a3	Screw	3	3	
6	20H1-006K	Lower shaft bushing middle (complete)	1	1	
7	20H1-006K1	Lower shaft bushing middle	1	1	
8	20H1-006G1	Felt	1	1	
9	20H1-006K	Lower shaft bushing right (complete)	1	1	
10	20H1-006K1	Lower shaft bushing right	1	1	
11	20H1-006G1	Felt	1	1	
12	72T4-002B1	coller	1	1	
13	72T4-002B2	Screw	2	2	
14	GB894-86	C-type stopper 15	1	1	
15	22T6-013	Washer	1	1	
16	24H7-002B1a	Feed rock shaft	1	1	
17	20H1-006E	Feed rock shaft bushing (left)	2	2	
18	22T2-002	Screw	2	2	
19	24H7-002B4a1	Feed rock shaft crank	1	1	
20	22T6-008D3	Screw	2	2	
21	22T2-019	Screw	2	2	
22	GB879-86	Spring pin	1	1	
23	24H7-002B4b2	Feed bar	1	1	
24	24H7-002B4c	Feed bar shaft	1	1	
25	GB896-86	E-type stopper 5	1	1	
26	24H7-002B4d	Washer	1	1	
27	24H7-002B5	Slide washer	1	1	
28	24H7-002B2a1	feed rock shaft (right)	1	1	
29	22T6-008D3	Screw	2	2	
30	24H7-002B2a2	Washer	2	2	
31	22T1-011	Screw	1	1	
32	24H7-002B3	Pin	1	1	
33	24H7-002B6	Feed lifting rock shaft	1	1	
34	GB894-86	C-type stopper	1	1	
35	22T6-013	Washer	1	1	
36	22T2-002	Screw	2	2	
37	20H1-006E	Feed lifting rock shaft bushing	2	2	
38	72T6-002B1b	Shaft	1	1	
39	72T6-007D1a	Square block	1	1	
40	72T6-007D1b	Washer	1	1	
41	72T6-002B1a	Feed lifting crank left	1	1	
42	82T2-003C1a6	Screw	1	1	
43	22T6-005B1	Coller	1	1	
44	22T3-002B2	Screw	2	2	
45	22T6-007	Shaft	1	1	
46	24H7-002B7a	Feed lifting crank right	1	1	
47	22T6-001A1b	Screw	2	2	

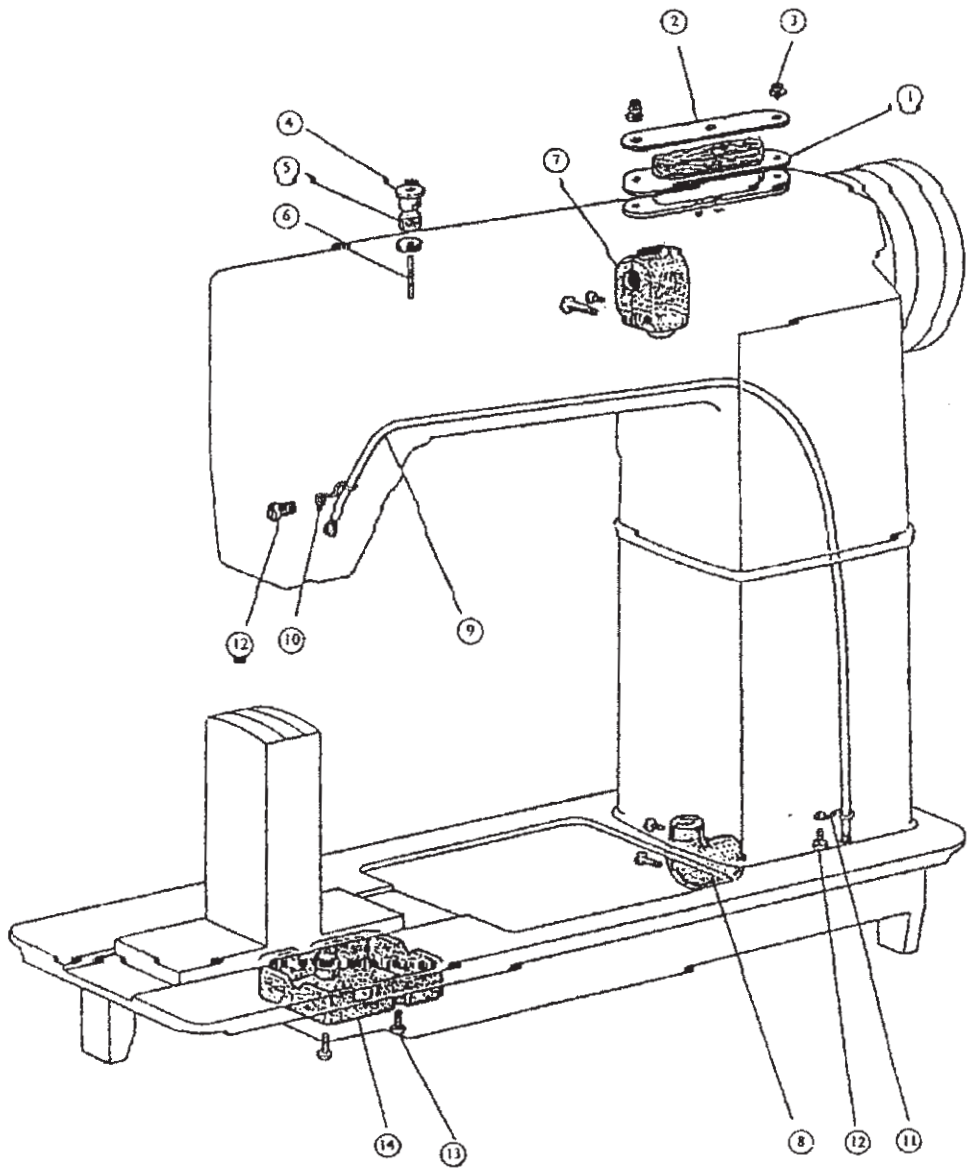




### 8. HOOK MECHANISM

No.	Ref. No.	Description	Needle Number		Remarks
			Single	Double	
1	24H8-001A1	Hook (complete)	1		
2	24H8-001A2	Screw	1	2	SM9/64"(3.57) × 40
3	24H8-001A3	Opener (complete)	1	2	
4	24H8-001A3a	Opener	1	2	
5	24H8-001A3b	Screw	1	2	SM9/32"(7.14) × 28
6	24H8-001A3c	Opener bracket	1	2	
7	24H8-001A3d	Screw	1	2	SM9/64" × 40 × 8.5
8	24H8-001A5	Hook shaft	1	2	
9	24H8-001A6	Hook shaft bushing	1	2	
10	22T1-011	Screw	1	2	
11	24H8-001A7	Bevel gear (complete)	1	2	
12	24H8-001A7a	Bevel gear (hook shaft)	1	2	
13	24H8-001A7b	Bevel gear (lower shaft)	1	2	
14	22T3-002B2	Screw	4	8	
15	22T3-002B2	Screw	2	4	
16	24H8-001A8a	Collar	1	2	
17	24H8-001A9	Felt	1	2	
18	24H8-002	Bobbin	1	2	
19	24H8-003B1	Feed plate	1	1	
20	24H8-003B2	Feed dog	1		
21	72T1-013	Screw	1	1	
22	24H8-003B3	Needle plate	1		
23	24H8-003B4	Screw	2	2	SM9/64"(3.57) × 40
24	24H8-003B5	Feed plate set bracket	1		
25	24H8-003B6	Supporter plate	1	1	
26	72T1-019	Screw	2	2	
27	24H8-003B7	Square block (complete)	1	1	
28	24H8-004	Screw	1	1	SM11/64" × 40
29	20H12-012	Nut	1	1	
30	24H8-005	Cover plate	1		
31	24H8-006	Cover plate	1		
32	24H8-007	Screw	8		SM9/64" × 40 × 6
33	24H8-008	Screw	3	4	SM11/64" × 40 × 4
34	24H8-001A4	Hook shaft supporter	1	2	
35	24H8-009	Side cover bracket	1		
36	22T6-008D3	Screw	4		
37	24H8-010	Rear cover plate	1		
38	22T2-019	Screw	4		
39	24H8-011	Slide plate	1	2	
40	24H8-012	Screw	6	6	SM5/16" × 28 × 26
41	GB93-87	Spring washer	6	8	
42	GB848-85	Washer	6	6	
43	25H8-001A1a	Feed dog		1	
43	25H8-001A1b	Feed dog		1	
44	25H8-001A2a	Needle plate		1	
44	25H8-001A2b	Needle plate		1	
44	25H8-001A2c	Needle plate		1	
45	25H8-001A3	Feed plate set bracket		1	
46	25H8-003	Cover plate		1	
47	25H8-002	Cover plate		1	
48	25H8-004	Cover plate		2	
49	25H8-005	Screw		2	SM1/4" × 24 × 16.5
50	GB848-85	Washer		2	
51	82T2-003C1R6	Screw		16	

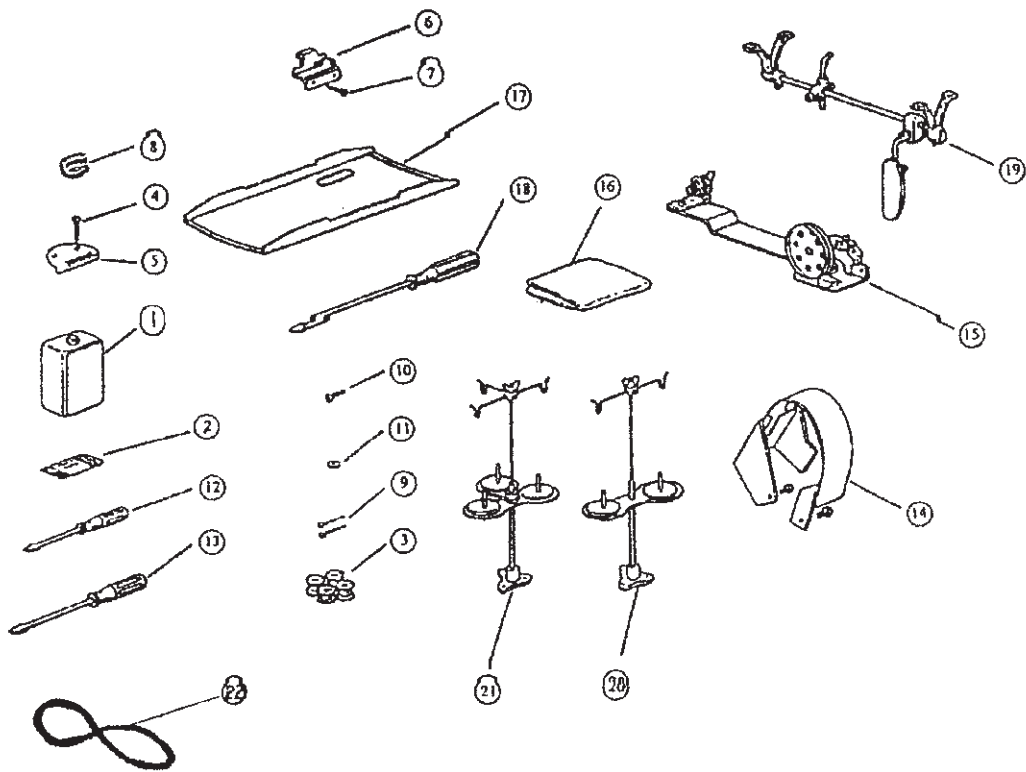
9



## 9. OIL LUBRICATION MECHANISM

No.	Ref. No.	Description	Needle Number		Remarks
			Single	Double	
1	20H12-017	Oil box (complete)	1	1	
2	20H12-017A	Oil cover	1	1	
3	72T1-017	Screw	2	2	
4	24H9-001	Oil cap	1	1	
5	24H9-002	Felt	1	1	
6	24H9-003	Oil wick	1	1	
7	24H9-004A	Gear box upper (complete)	1	1	
8	24H9-005B	Gear box lower (complete)	1	1	
9	24H9-007C	Pipe (complete)	1	1	
10	24H9-009	Holder	1	1	
11	24H9-008	Holder	1	1	
12	22T2-019	Screw	2	2	
13	82T2-003C1a6	Screw	2	2	
14	24H9-006	Gear box	1	1	

**10**



## 10. ACCESSORIES

No.	Ref. No.	Description	Needle Number		Remarks
			Single	Double	
1	20H14-001E	Oiler	1	1	
2	24H3-001A3	Needle	4	6	DP × 5-16
3	24H8-002	Bobbin	3	4	
4	GB100-76	Screw	4	4	6 × 25, 发黑
5	24H10-001A5	Hinge (2)	2	2	
6	24H10-001A4	Hinge (1)	2	2	
7	24H10-001A6	Screw	4	4	SM15/64" × 28 × 9
8	24H10-001A7	Vibration preventing rubbers	4	4	
9		Nail	10	10	
10	GB99-76	Screw	2	2	
11	72T9-023	Washer	2	2	
12	72T9-021	Screw driver (small)	1	1	
13	72T9-020	Screw driver (middle)	1	1	
14	24H10-002B	Belt cover (complete)	1	1	
15		Bobbin winder (complete)	1	1	
16	72T9-019	Vinyl cover	1	1	
17	24H10-005	Oil reservoir	1	1	
18	72T9-007	Screw driver (large)	1	1	
19	24H10-007	Knee lifter (complete)	1	1	
20		Cotton stand (complete)	1		
21		Cotton stand (complete)		1	
22	24H10-008	Belt	1	1	M55 (1397mm)