

ARTISAN®

Model 335 B

Cylinder Bed Walking
Foot Sewing Machine



Threading Guide

Blank on purpose

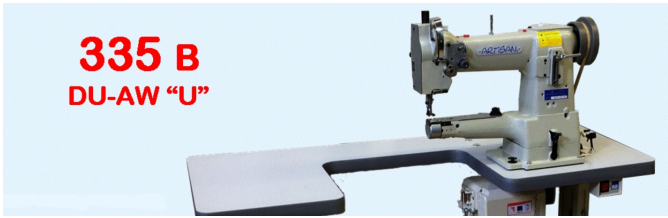


Table of Contents

Page 4 Step 1.....Thread stand

Page 5 Step 2.....Upper thread post

Page 6 Step 3.....Threading Image

Page 7 Step 4.....Threading Route

Page 8 –11....Closer view of threading

Page 12 Step 5.....Threading the libra

Page 13 Step 6.....Felted thread guide
& center press shaft threading

Page 14 - 15 Step 7.....Through needle and
center presser foot

Step 1



The thread stand and thread guide need to be parallel to each other for the correct tension to be maintained. The thread will move off the spool to the back of the guide feeding from back to front.

Step 2



The thread will go thru the top hole then around the pin passing thru the bottom hole as shown in image above.

Step 3



Fig 6-1

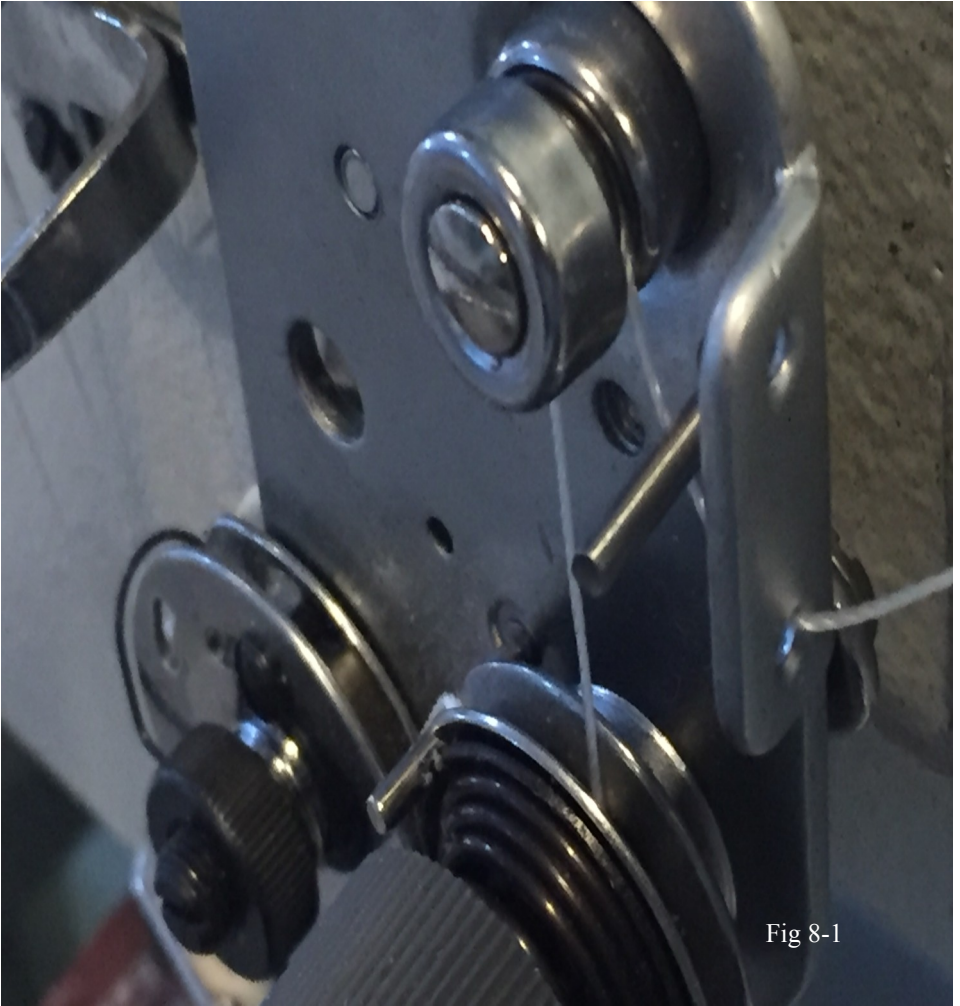
The thread then passes thru the bottom tension guide opening as illustrated above.

Step 4



Fig 7-1

1. Start from tension post to lower guide opening
2. Through lower opening under rod
3. Over and around ,pulled into top tension screw guide
4. Down and around lower tension guide
5. Over rod
6. Under and around lowest tension guide
7. Around guide all the way up past inter thread hook
8. Up through thread guide upper



Closer view of operation 1, 2, and 3 from previous page 7

Closer view of operation 4, 5, 6, 7, and 8 from previous page 7

1. Around guide all the way up past inter thread hook. Pulling thread all the way into guide groove.



Fig 9-1

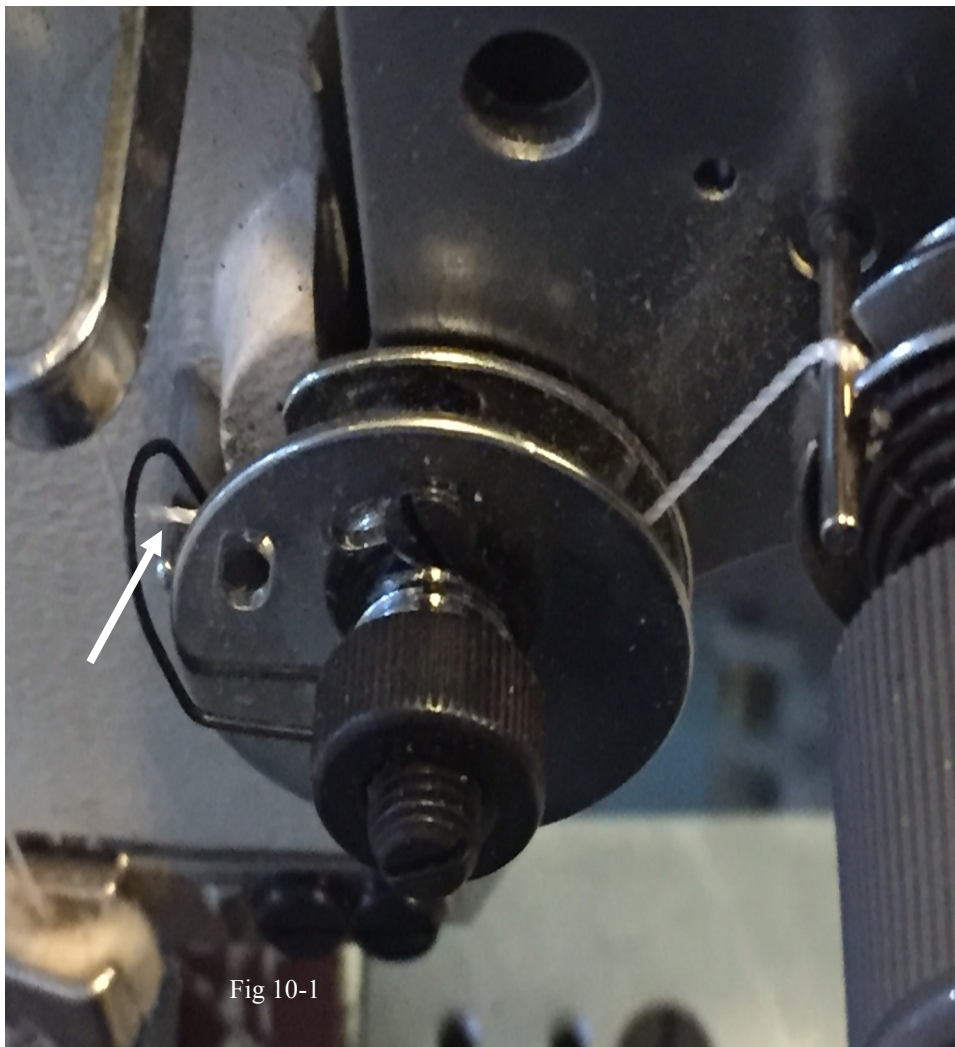


Fig 10-1

Another view of lower guide retainer



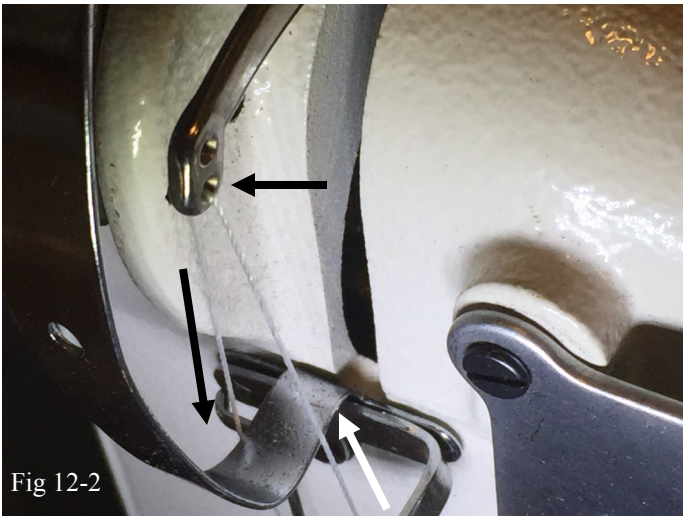
Fig 11-1

Another view of lower guide retainer

Step 5



Up through and to thread take-up libra



Through lower opening on thread take-up libra. Down past the left side of the libra cover.

Step 6

Artisan 335B



Fig 13-1

Down through felted thread guide

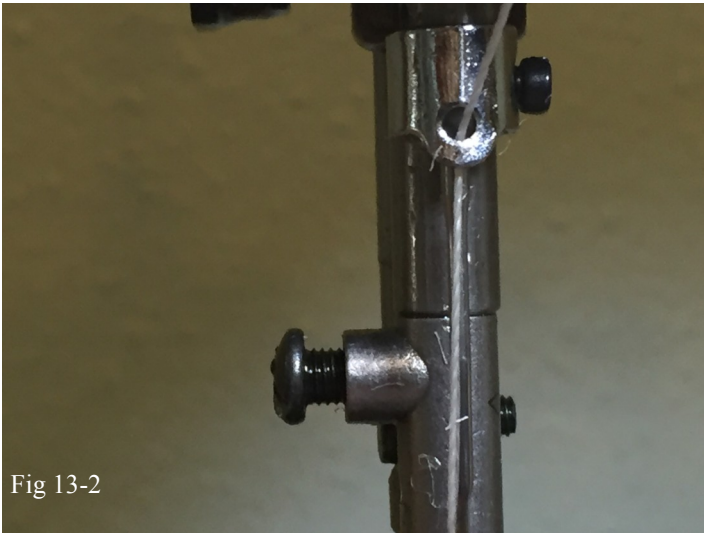


Fig 13-2

Passing through eyelet on the upper part of the center press shaft.

Step 7



Fig 14-1

Finally down the left side of the needle passing through from left to right the eye of the needle.

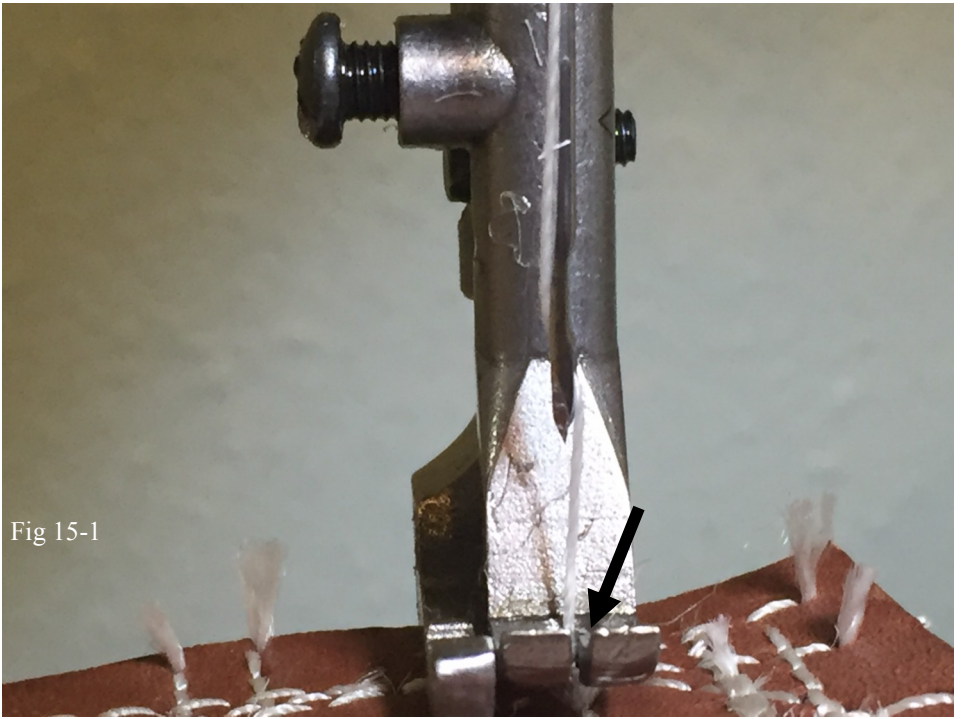


Fig 15-1

Pulling thread down thru center opening
and to the rear of the presser foot

Notes

Notes

Notes

Artisan 335B

Notes

ARTISAN SEWING MACHINES

**Big Bobbin, Small Cylinder Bed
Compound Needle Feed Walking Foot
Sewing Machine with Reverse Feed**